



# iHome iPL8 Battery Replacement

How to replace the battery of an iHome iPL8.

Written By: Chen Zhong



---

## INTRODUCTION

This guide instructs you to replace the battery in an iHome iPL8. The process includes using screwdriver and removing bottom door of the device to detach the battery.

---

### TOOLS:

- [Phillips #2 Screwdriver](#) (1)
-

## Step 1 — Battery



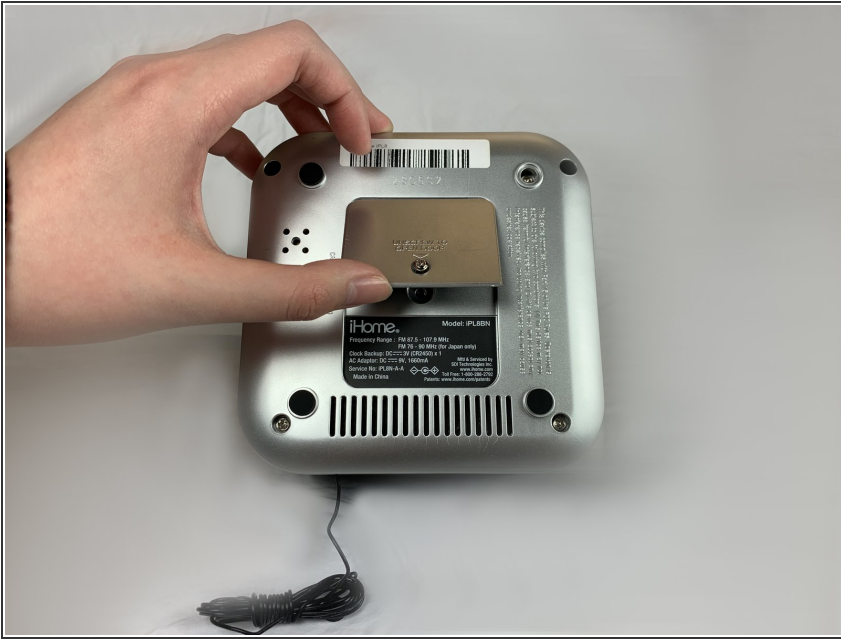
- Turn the device over to access the bottom panel.
- Locate the 6mm Phillips #2 screw under the label "unscrew to open door."

## Step 2



- Using a Phillips #2 screwdriver, unscrew the captive screw.
- Keep turning until the screw and the door are loose.

## Step 3



- Lift and remove the battery access panel.
- ⓘ The captive screw will remain attached to the panel.

## Step 4



- Gently press on the rim of the 3V battery.
- Remove the 3V battery.

To reassemble your device, follow these instructions in reverse order.