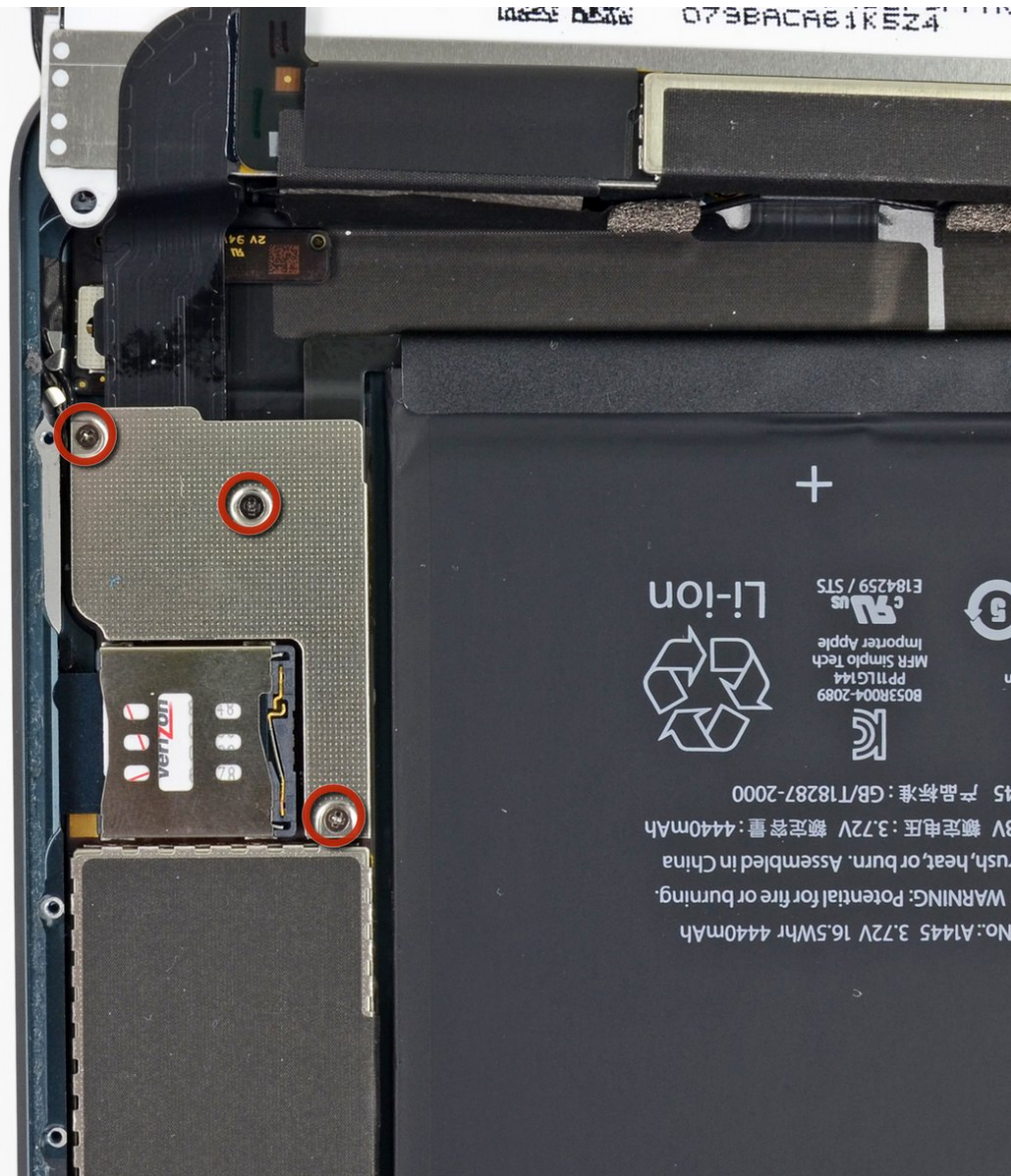




# iPad Mini CDMA Battery Connector Replacement

Prereq for disconnecting battery.

Written By: Andrew Optimus Goldheart



---

## INTRODUCTION

Prereq for disconnecting battery.

---

### TOOLS:

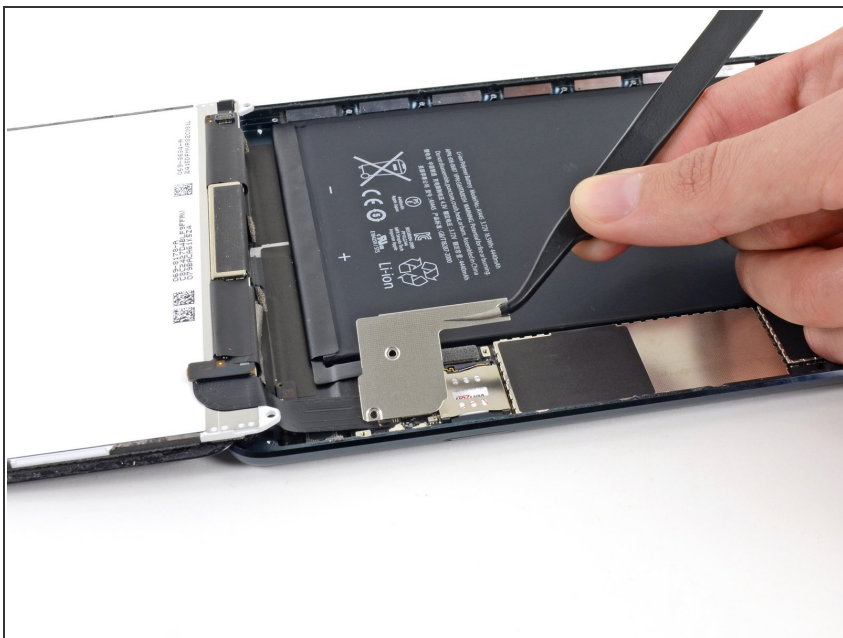
- [Phillips #00 Screwdriver](#) (1)
  - [Spudger](#) (1)
-

## Step 1 — Battery Connector



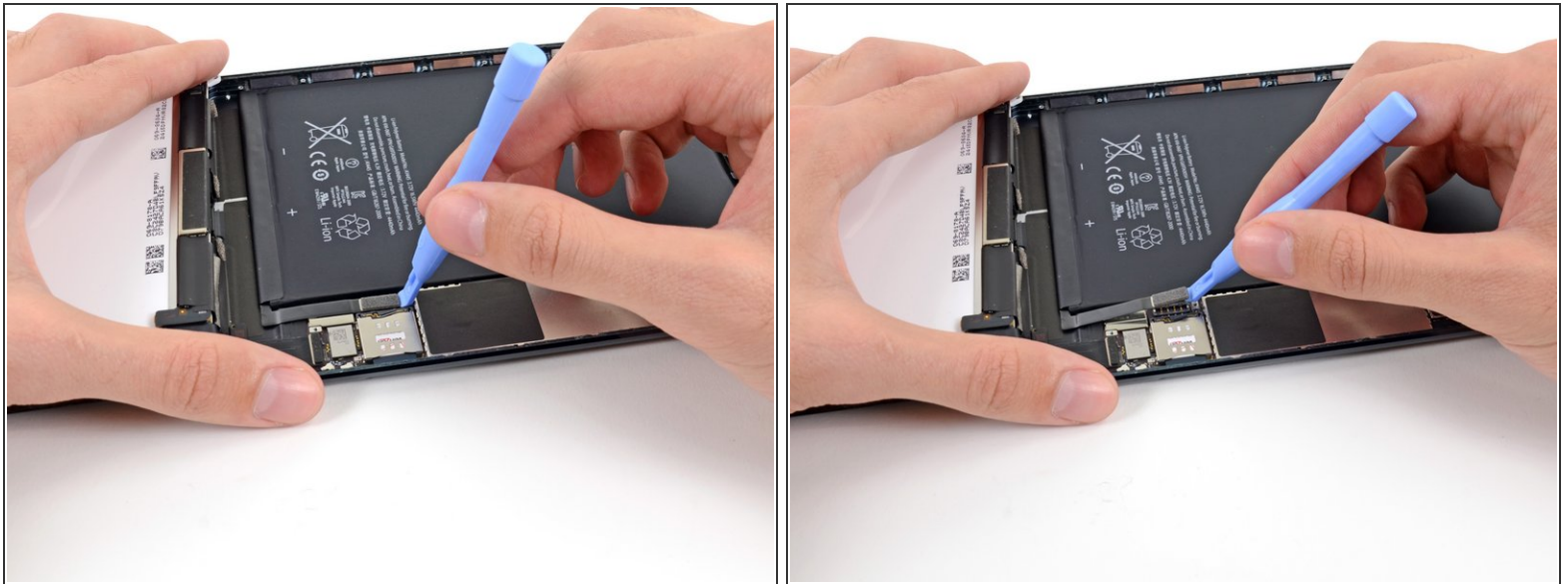
- Remove the three 1.3 mm Phillips #00 screws securing the connector shield to the logic board.
- ⚠ Be sure to not substitute these three screws with any other screws, specifically the screws securing the LCD shield plate to the rear case of the iPad. Any slightly longer screws may strip the screw holes and result in irreparable damage to the logic board.

## Step 2



- Use a pair of tweezers to grasp and remove the connector shield from the iPad.

## Step 3



- Use a plastic opening tool to gently pry the battery connector up from its socket on the logic board.
- ⚠ Be very careful to only pry up on the battery connector and not on the socket itself. If you pry up on the logic board socket, you may break the connector entirely.

To reassemble your device, follow these instructions in reverse order.