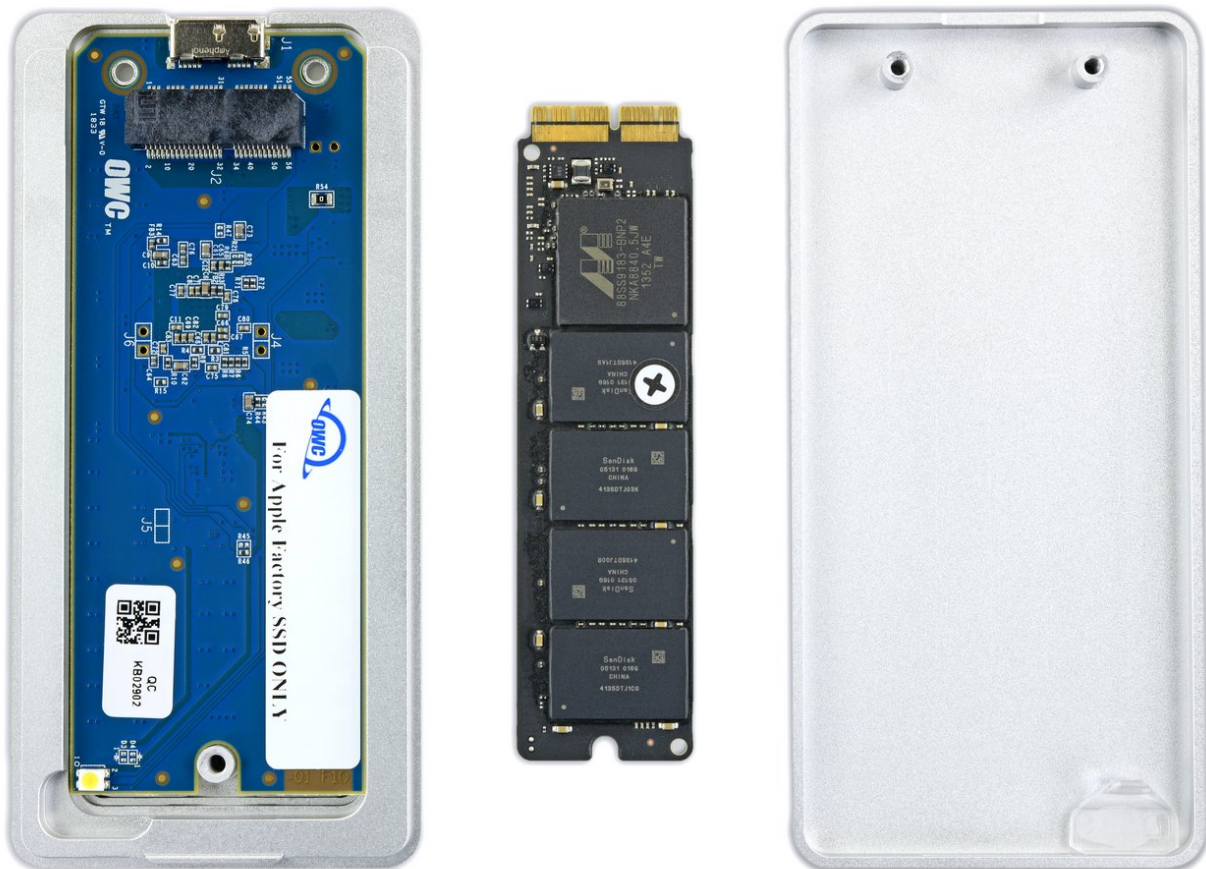




# How install a Mac SSD into an OWC Envoy Pro enclosure

This guide will show you how to install a factory-installed Mac SSD to one of OWC's Envoy Pro external SSD enclosures.

Written By: Taylor Dixon



## INTRODUCTION

OWC's Envoy Pro enclosures allow you to repurpose a factory-installed Mac SSD as a portable external drive. Follow this guide to learn how to install your SSD into the enclosure.

If you still need to complete your SSD upgrade, find your Mac starting from [this page](#) and look for the *SSD Replacement* guide.

**Note: OWC Envoy Pro enclosures are designed for use with factory-installed Mac Solid State Drives, and *will not* work with other PCIe replacement drives and adapters, including OWC's own Aura Pro drive.**



### TOOLS:

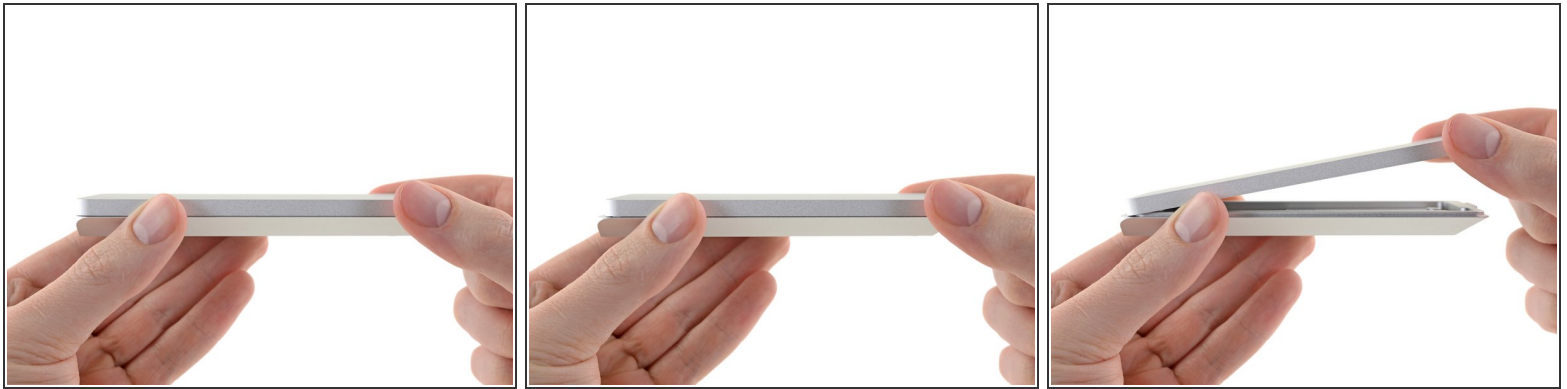
- [T5 Torx Screwdriver](#) (1)



### PARTS:

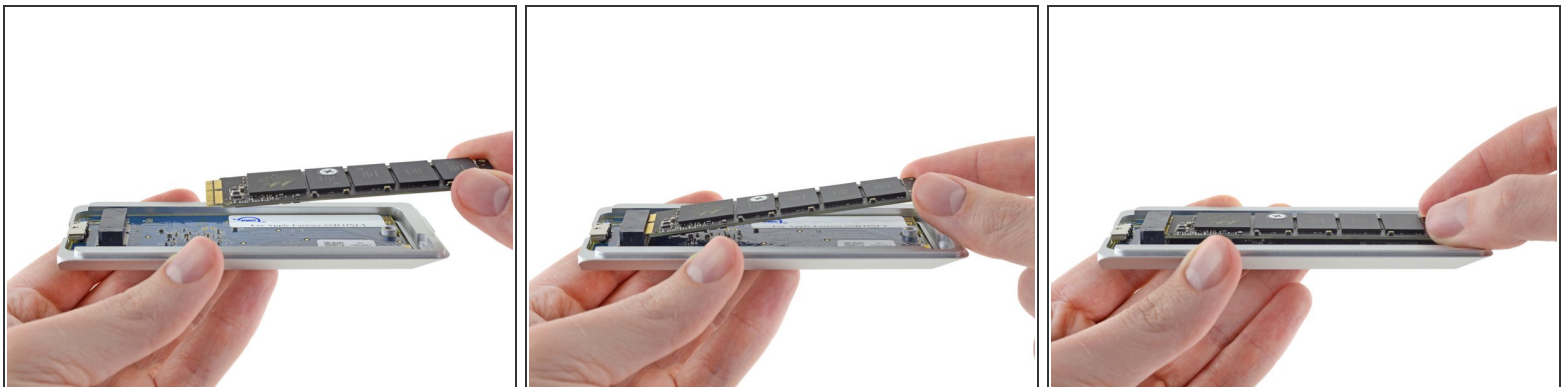
- [OWC Envoy Pro External SSD Enclosure \(Mid 2012 and Early 2013 Macs\)](#) (1)
- [OWC Envoy Pro External SSD Enclosure \(Mid 2013 to Mid 2015 Macs\)](#) (1)
- [MacBook Air 11" \(2013-2015\) 13" \(2013-2017\) MacBook Pro Retina 13" and 15" \(2015\) SSD](#) (1)

## Step 1 — How install a Mac SSD into an OWC Envoy Pro enclosure



- To open the enclosure, pull the top half down toward the wedged end and lift it away from the bottom half.

## Step 2



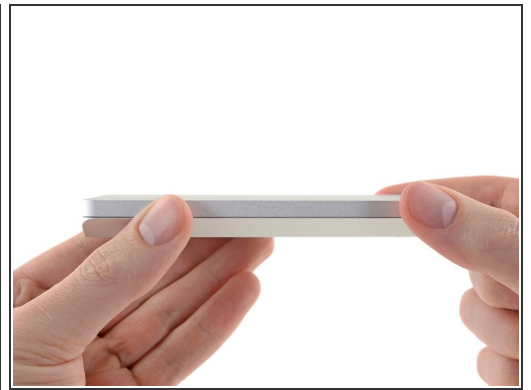
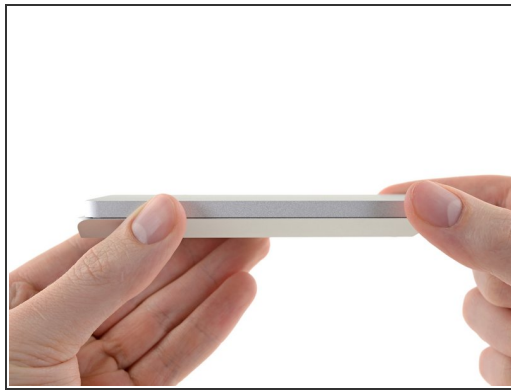
- Carefully insert your Mac OEM SSD as shown at left, with the [golden contact pads](#) below the connector pins facing upward.
- ⚠ The SSD might take a significant amount of force to insert. Make sure you have the orientation correct before you apply any pressure.
- ⓘ When the SSD is fully inserted, you should barely be able to see the golden contact points at the top of the drive, and the notch at the bottom of the drive should be [aligned with the hole](#) for the screw in the enclosure.

### Step 3



- Use a T5 Torx driver to install the 6.5 mm screw securing the bottom of the SSD.

### Step 4



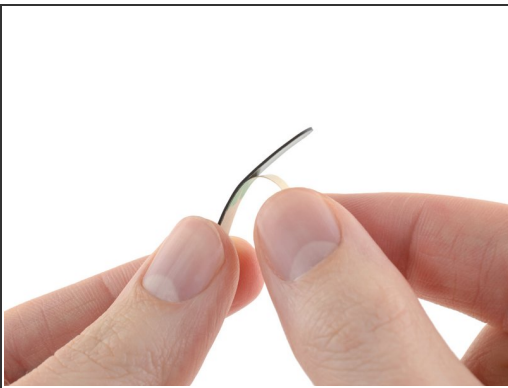
- Reinstall the top half of the enclosure and slide it closed.

## Step 5



- Use a T5 Torx driver to install the two 7.6 mm screws on the bottom of the enclosure.

## Step 6



- Remove the backing from the adhesive on the extra rubber foot provided in the plastic bag with the screws.
- With the backing removed, place the sticky side of the rubber foot down over the screws you just inserted, and apply pressure to it for 30 seconds.

## Step 7



- The drive is now ready to be connected to your computer with the included USB cable.

Once your drive is installed, you can [transfer data from it](#), or use Disk Utility to format it and [use it as a Time Machine backup](#).