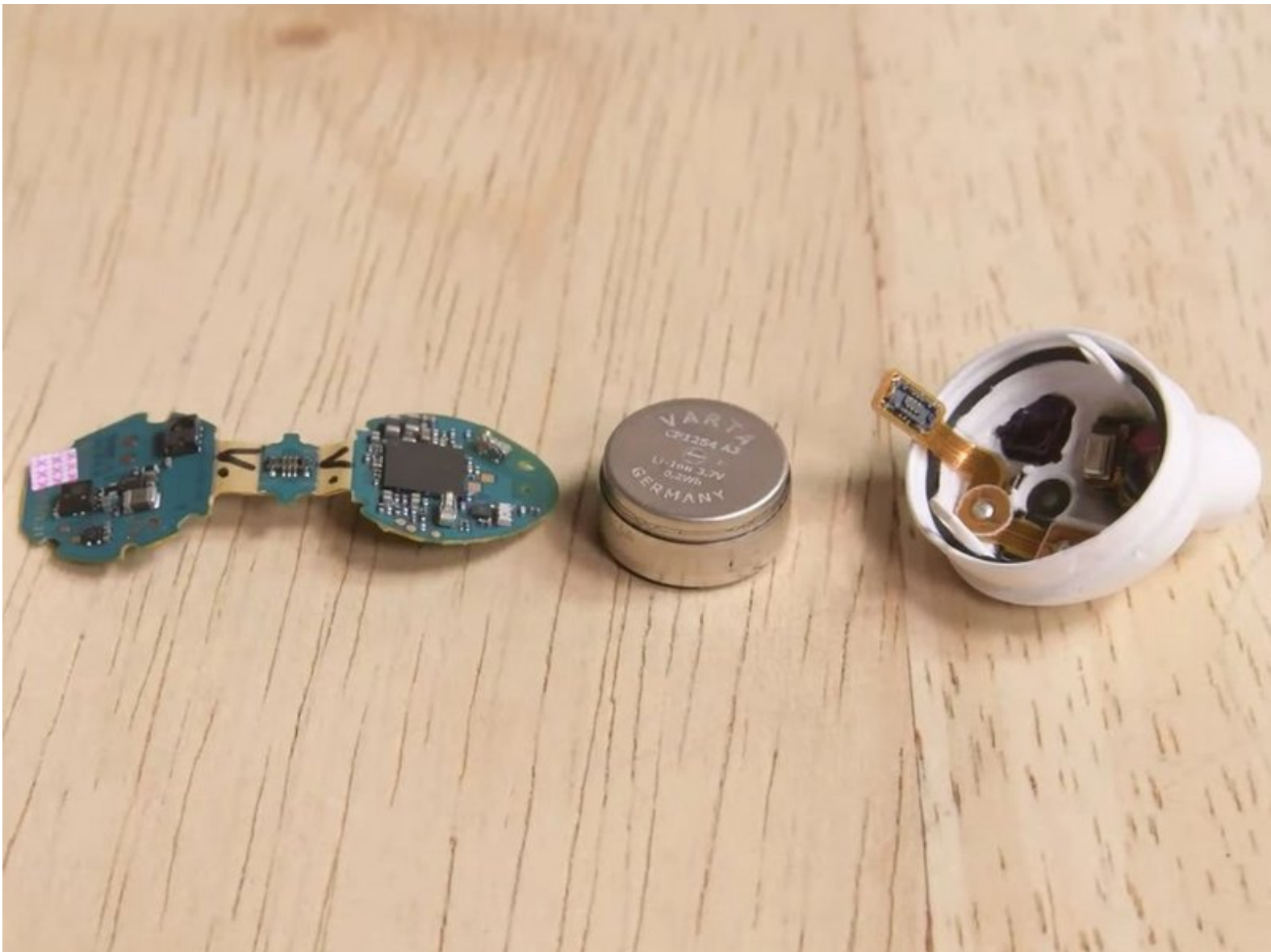




# Samsung Galaxy Buds Teardown

A video teardown of the Samsung Galaxy Buds performed by iFixit in March of 2019.

Written By: Taylor Dixon



---

## INTRODUCTION

[video: <https://www.youtube.com/watch?v=Mg6OpvMzguY>]

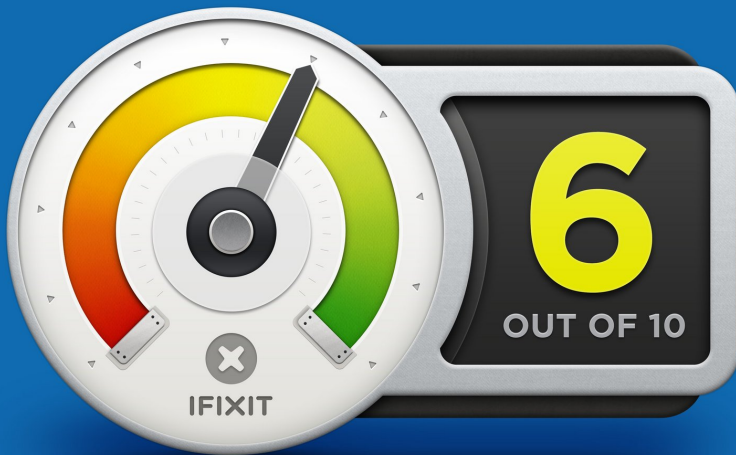
---

### TOOLS:

- [Essential Electronics Toolkit](#) (1)
  - [Precision Utility Knife](#) (1)
-

## Step 1 — Final Thoughts

### REPAIRABILITY SCORE:



- The Samsung Galaxy Buds earn a **6 out of 10** on our repairability scale (10 is the easiest to repair):
  - External assemblies are held together with clips instead of glue, making for a mostly non-destructive entry process.
  - Disassembly can be accomplished with common prying tools and a Phillips screwdriver.
  - The earbuds use coin-cell batteries that are relatively easy to find online for future replacements.
  - The charging case battery is easier to replace, but will most likely be more difficult to source.
  - Adhesive is used to keep many of the internal components together, though it is not excessive and can be reused for reassembly.
  - After opening, careful prying is required to separate some adhered components without tearing fragile cables.
  - Some cables in the charging case are soldered directly to the motherboard instead of utilizing contact pads or board connectors.

