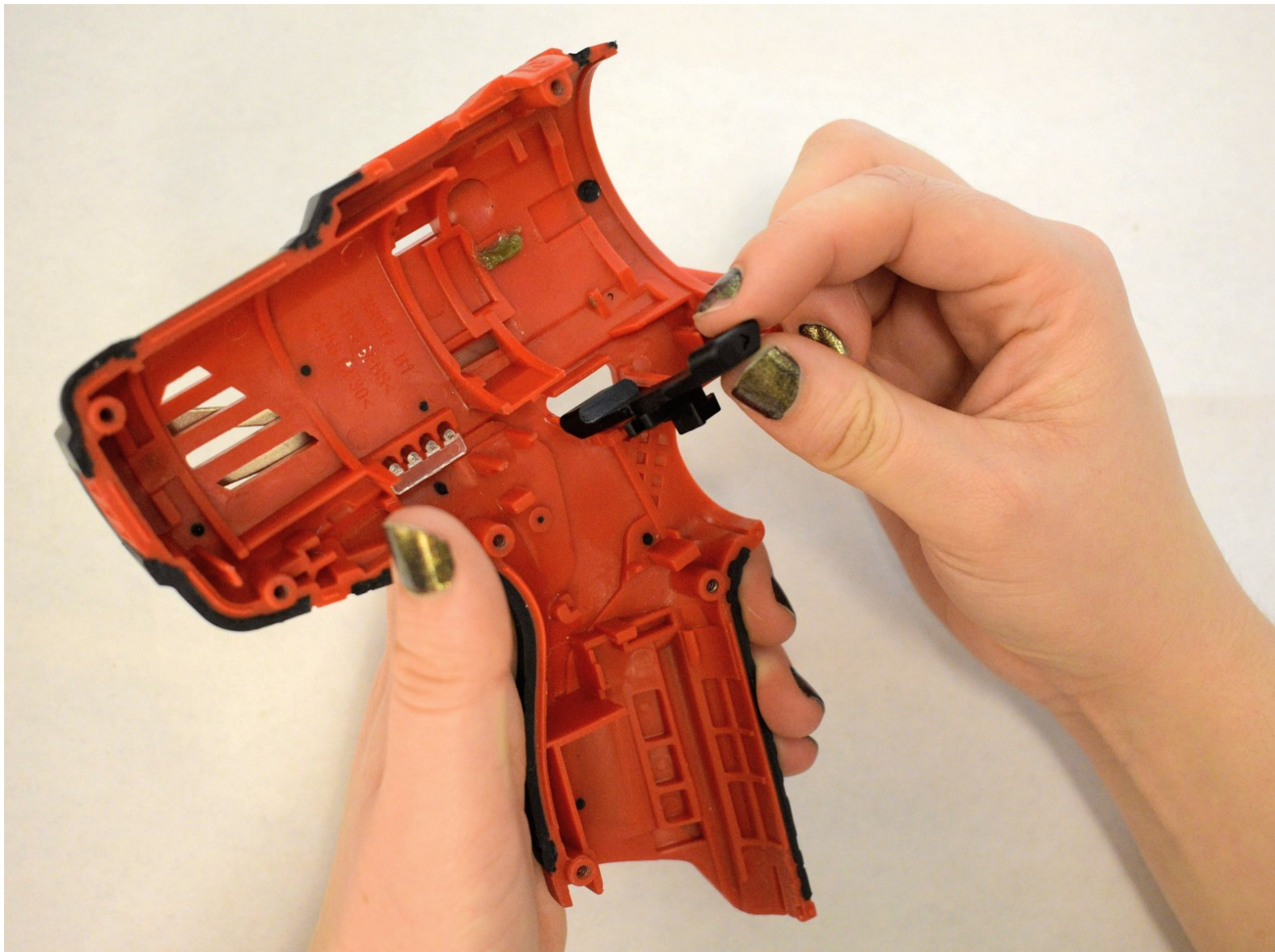




# Milwaukee M12 2407-20 Forward/Reverse Shuttle Replacement

How to replace the forward/reverse shuttle in your Milwaukee M12 2407-20 Drill/Driver.

Written By: Skylar Norris



---

## INTRODUCTION

This guide will walk through the steps to replace the forward/reverse shuttle on the Milwaukee M12 2407-20.

---

### TOOLS:

- [T10 Torx Screwdriver](#) (1)
-

## Step 1 — Outer Casing



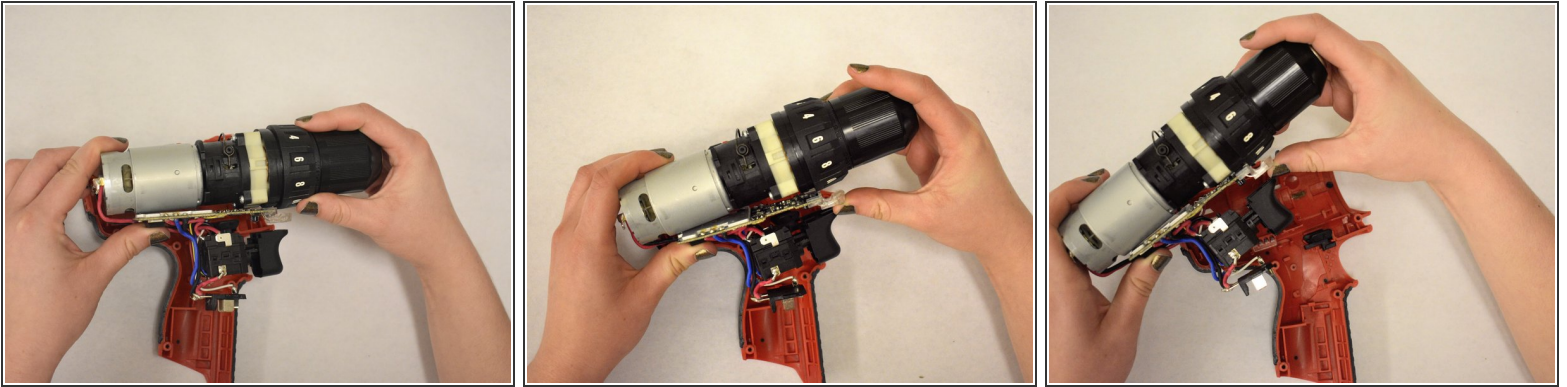
- Remove each of the seven 14mm Pan Hd. T-10 ST screws on one side of the housing assembly using the T10 screwdriver.

## Step 2



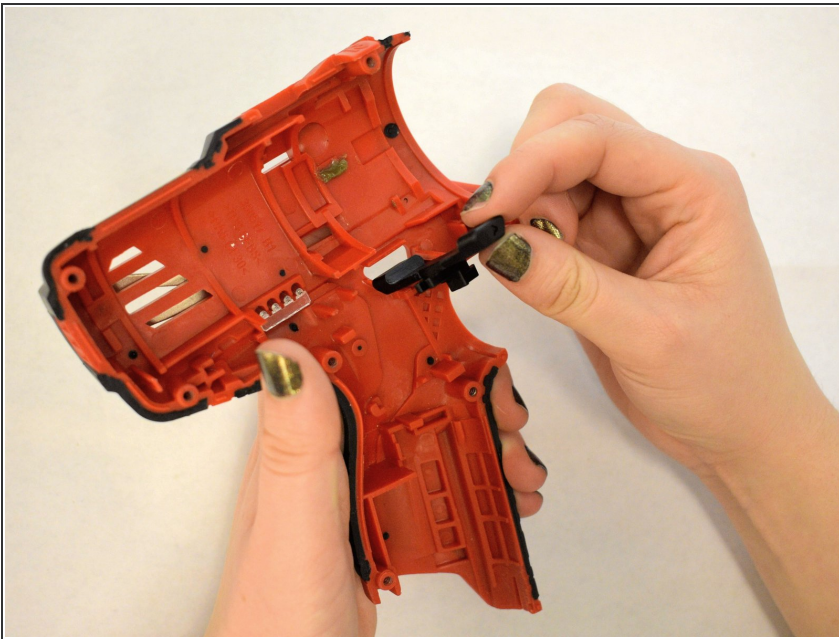
- Remove metal clip located at the base of the drill, where the battery is to be inserted.
- ⓘ You may need to use a spudger if the clip is too difficult to remove with your fingers.

### Step 3 — Forward/Reverse Shuttle



- Use both hands to lift and remove the gear case assembly from the shell casing.
- Set the gear case assembly aside.

### Step 4



- While holding the shell in one hand, pull the end of the broken forward/reverse shuttle out of the casing.
- Set the broken forward/reverse shuttle aside.

To reassemble your device, follow these instructions in reverse order.