



PS4 Dualshock 4 trigger reassembly

This guide will show you how to reassemble the PS4 Dualshock 4 controller, with emphasis on the trigger part.

Written By: The 12 year-old repair guy



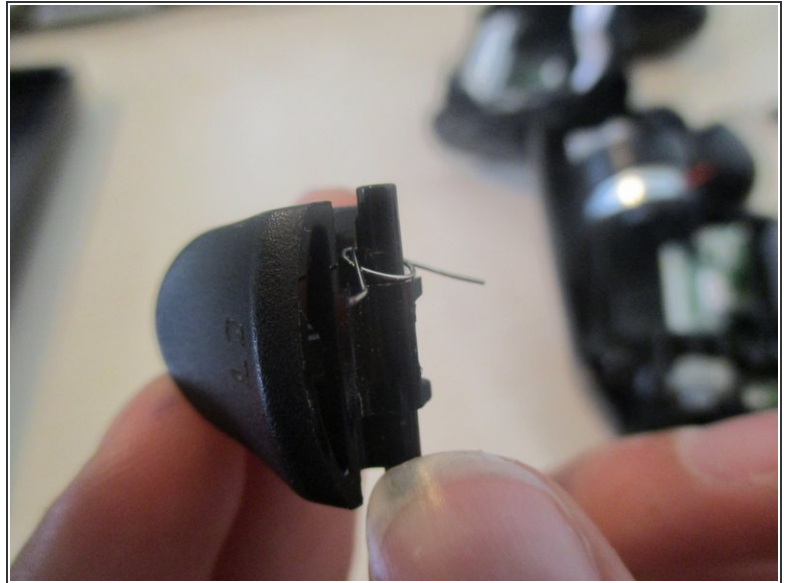
INTRODUCTION

I decided to create this guide because i got *triggerred* trying to reassemble the PS4 Dualshock 4 Controller

TOOLS:

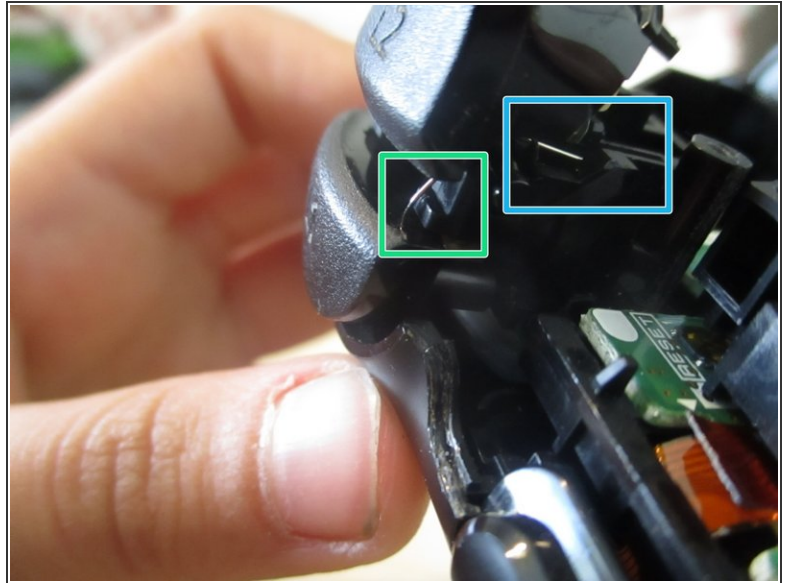
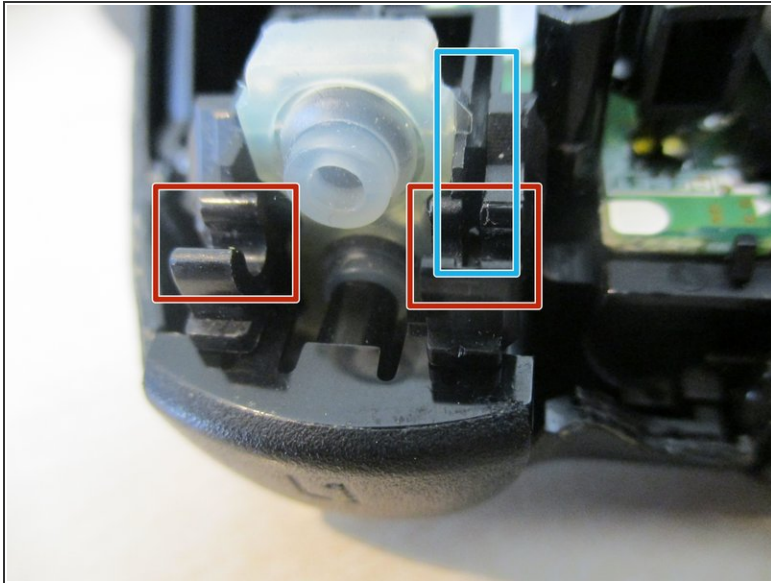
- [Phillips #0 Screwdriver](#) (1)
-

Step 1 — Preparing the triggers



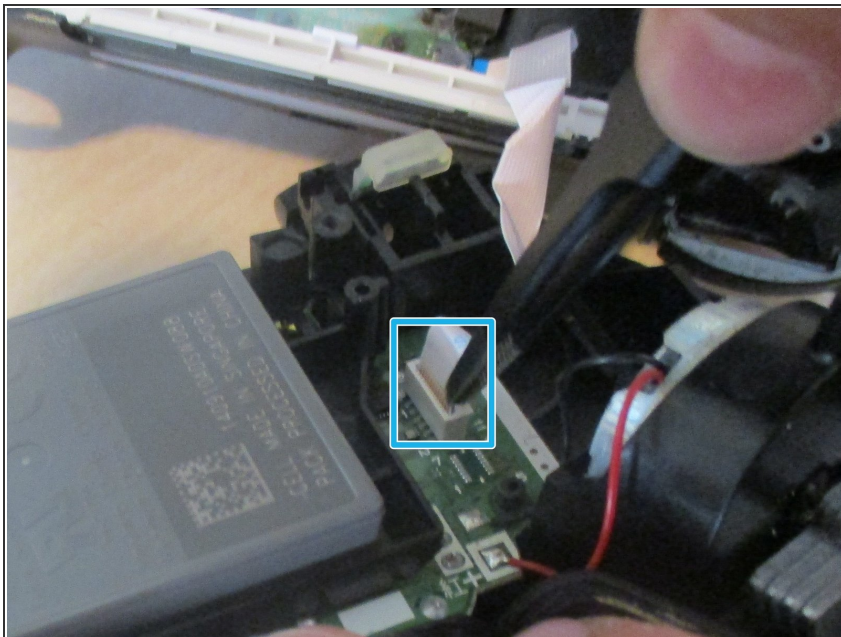
- Remove these two triggers and springs from the backplate.
- Find which trigger goes on which side and put the springs in the trigger part facing towards the inside of the controller.

Step 2 — Attaching the triggers.



- On these two clips...
- Push down the trigger until it clicks on both sides.
- ⓘ Make sure that the one spring part is inside the rail (marked cyan) and the other outside the whole assembly (green).

Step 3 — Connecting the light bar



- Connect the light bar cable using your fingers. Make sure it is fully pushed down and that it is plugged in the right way.

Step 4 — Closing the cover



- close the cover starting from the side of the triggers. Don't worry if it's a bit hard to do so, but be careful so you don't break the plastic between the trigger and the bumper.
- Push down until it clicks everywhere.
- Finally, screw in these four screws using a PH0 screwdriver.