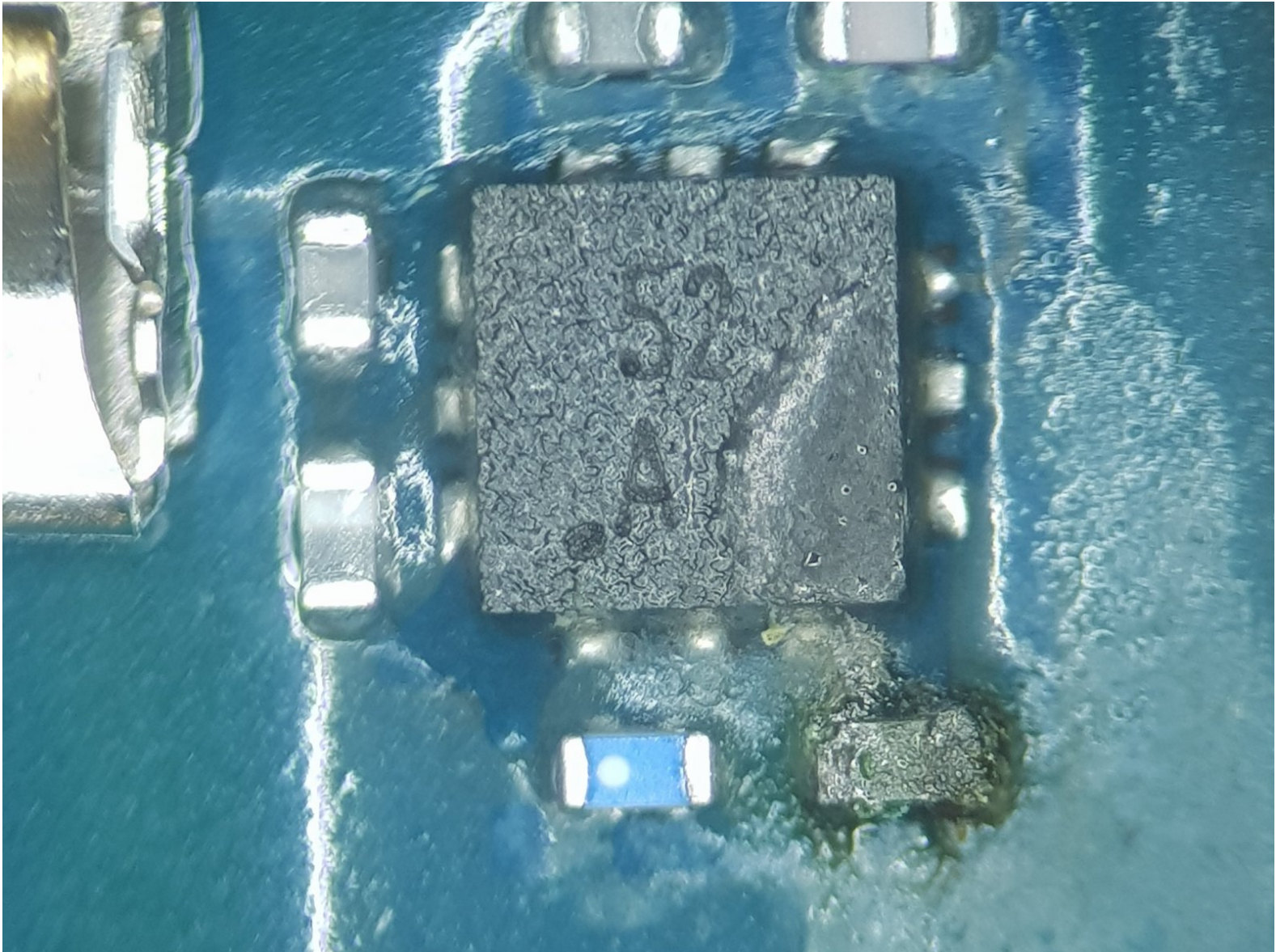




Charging paused. Battery temperature too low.

The phone won't charge but the voltage at battery port is 4.1V

Written By: Adrian Zymeri



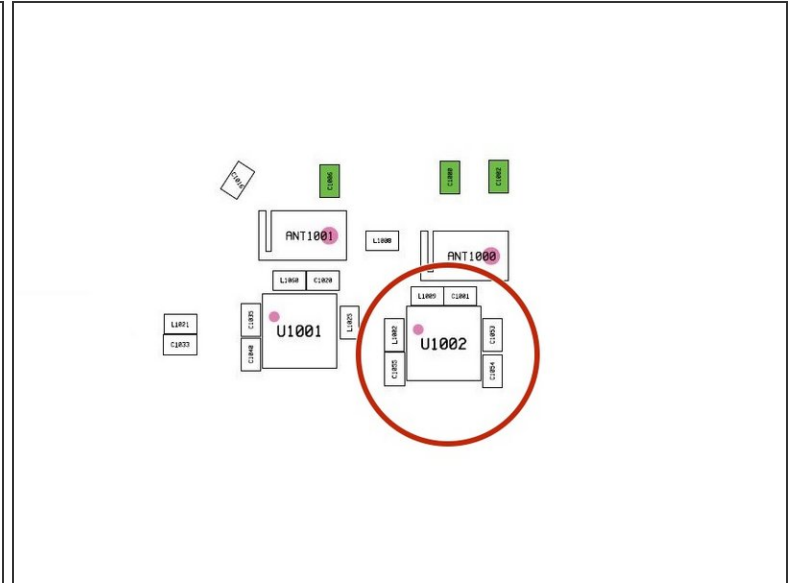
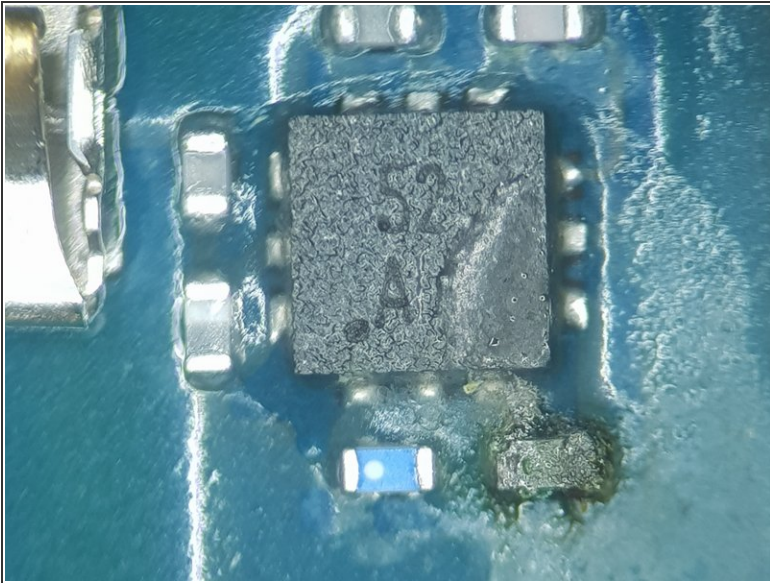
INTRODUCTION

If you have this error and the voltage at the battery port is normal so you have to check C1055 with diode mode it should give you low values like 0.002V, remove the capacitor and measure again the pads where capacitor used to be if the value don't change then remove the U1002 IC and replace with a new one.

TOOLS:

- [iOpener](#) (1)
 - [Digital Multimeter](#) (1)
 - [Heatgun/heatplate](#) (1)
 - [Pro Tech Toolkit](#) (1)
-

Step 1 — Charging paused. Battery temperature too low.



- Insert wisdom here.

To reassemble your device, follow these instructions in reverse order.