



iBook G3 12" RAM Replacement

Written By: iRobot



INTRODUCTION

One RAM slot will accept PC100 or PC133 chips up to 512 MB.

TOOLS:

- [Coin](#) (1)
- [Phillips #00 Screwdriver](#) (1)
- [Flathead 3/32" or 2.5 mm Screwdriver](#) (1)

PARTS:

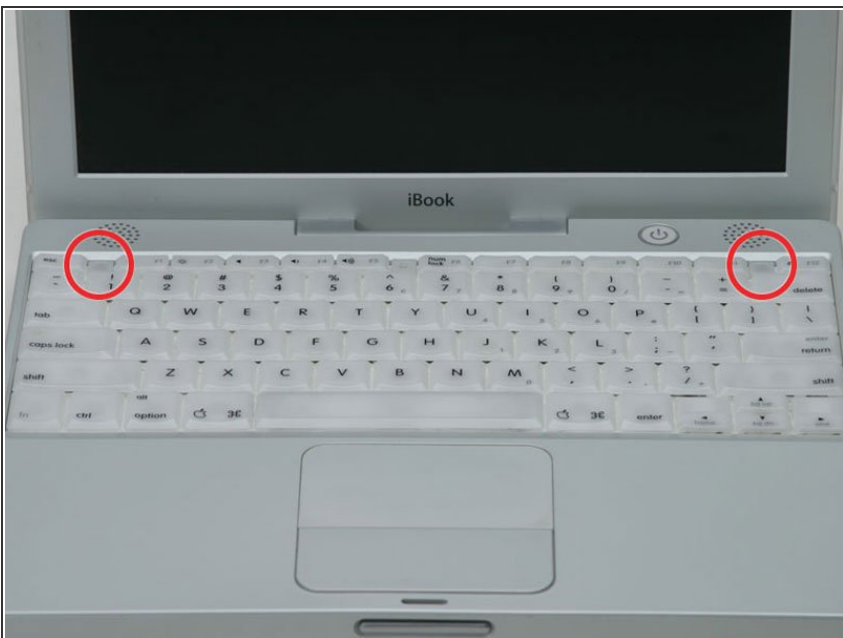
- [PC100 32 MB RAM Chip](#) (1)
- [PC133 512 MB RAM Chip \(New\)](#) (1)
- [G4 Titanium Onyx Screw Set](#) (1)
- [PC100 128 MB RAM Chip](#) (1)
- [PC100 256 MB RAM Chip \(Dual Layer\)](#) (1)
- [PC133 128 MB RAM Chip](#) (1)
- [PC133 256 MB RAM Chip](#) (1)

Step 1 — Battery



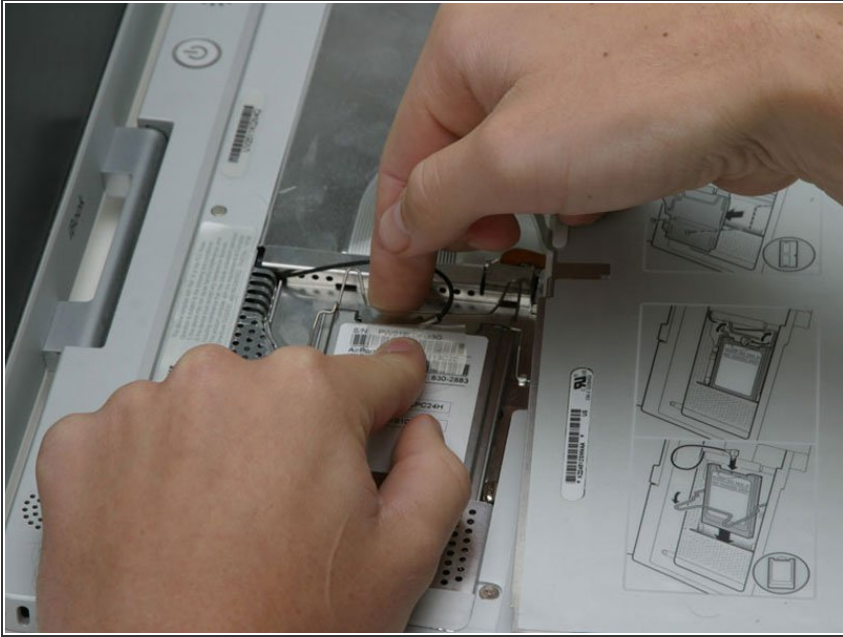
- Use a coin to rotate the battery locking screw 90 degrees clockwise.
- Lift the battery out of the computer.

Step 2 — Keyboard



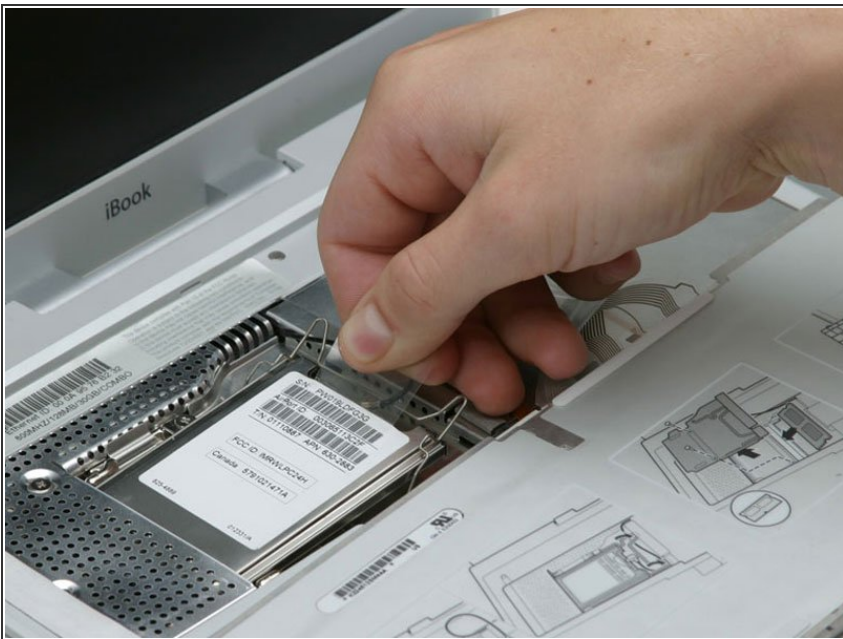
- Pull the keyboard release tabs toward you and lift up on the keyboard until it pops free.
- If the keyboard does not come free, use a small flathead screwdriver to turn the keyboard locking screw 180 degrees in either direction and try again.
- Flip the keyboard over, away from the screen, and rest it face-down on the trackpad area.

Step 3



- **i** If the computer does not have an Airport card installed, skip the next two steps.
- Push the wire clasp toward the Airport card and pull it up to free it from the RAM shield.

Step 4



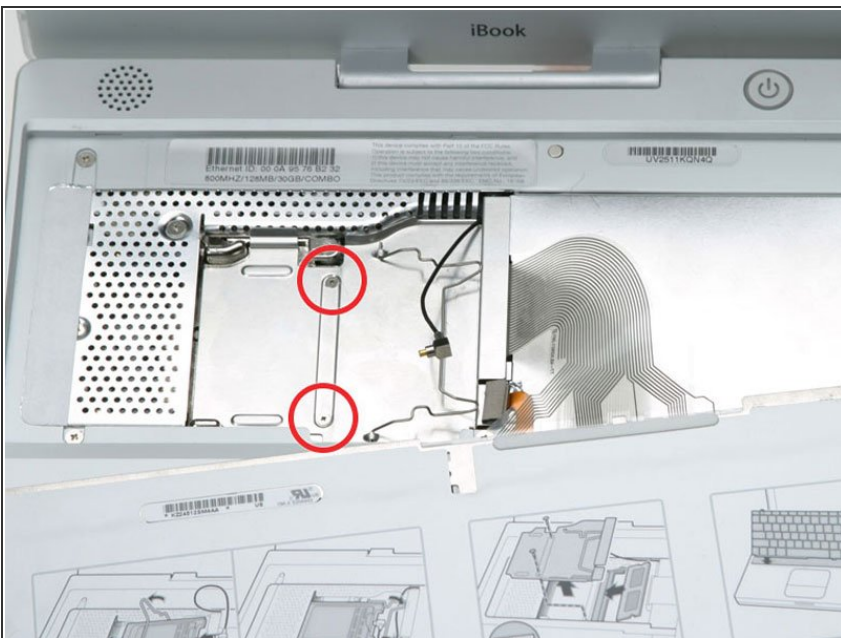
- Grasp the clear plastic tab on the Airport card and pull toward the right.

Step 5



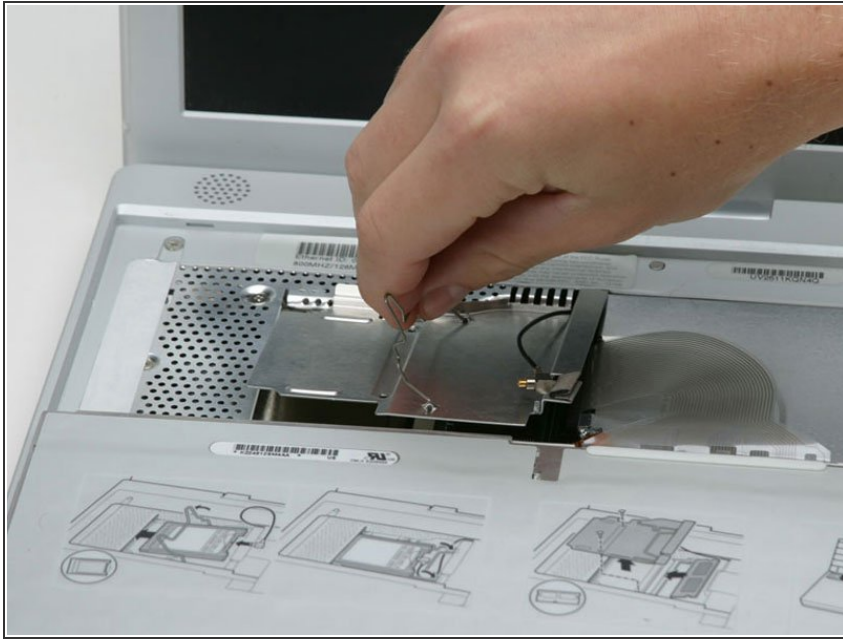
- Hold the Airport card in one hand and use your other hand to remove the antenna cable.

Step 6



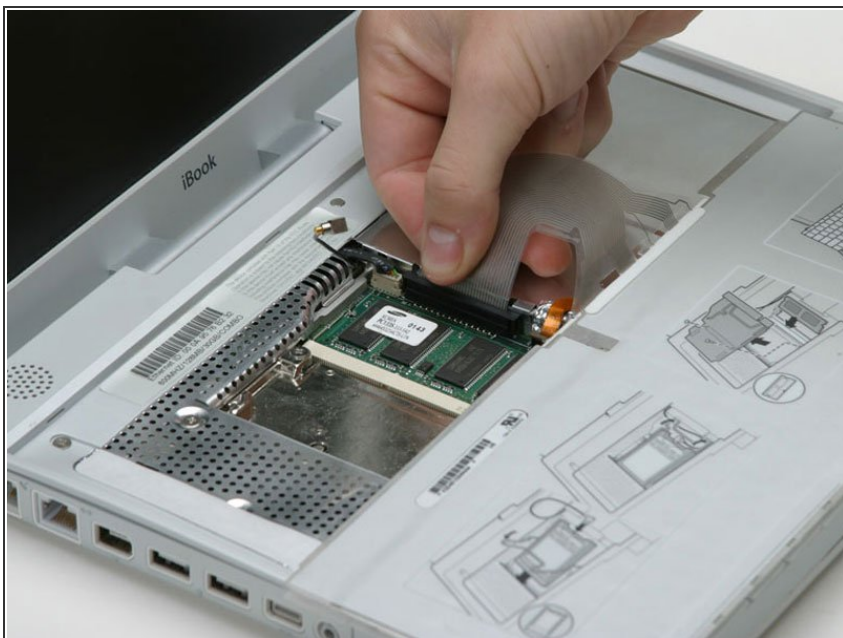
- Remove the two 2.5 mm Phillips screws that secure the RAM shield.

Step 7



- Grasp the metal bracket on top of the RAM shield and pull upward to remove the shield.

Step 8



- Pull the keyboard cable up from the logic board, holding the cable as close to the connector as possible.

Step 9 — RAM



- Your laptop should look approximately like this.

Step 10



- Release the tabs on each side of the RAM chip at the same time. These tabs lock the chip in place and releasing them will cause the chip to "pop" up.
- Pull the chip directly out from its connectors.

To reassemble your device, follow these instructions in reverse order.