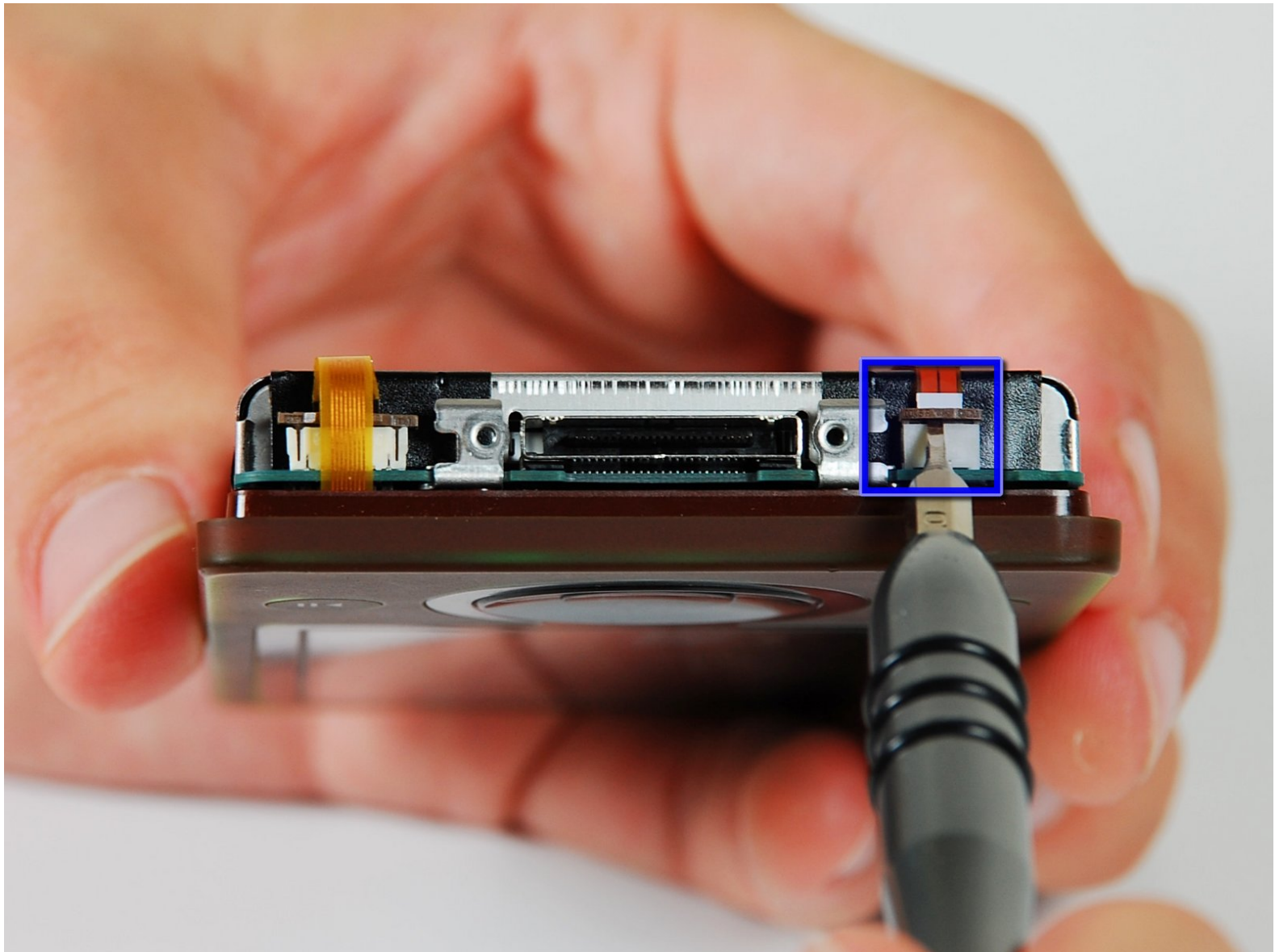




Microsoft Zune 30 GB Battery Replacement

Written By: jmorri04



INTRODUCTION

Remove the ribbon cable that attaches the battery to the logic board. If the brown latch is lifted too high it will detach and the white piece might fall off during later steps.

TOOLS:

- [Flathead 3/32" or 2.5 mm Screwdriver](#) (1)
-

Step 1 — Back Case



- Remove the plastic screw cover located on the bottom of the device. Insert a small flat-headed screwdriver into one side of the cover and gently ease it out. Repeat on the other side.
- ⓘ Be gentle when removing the screw cover as it is brittle and will break if forced.
- You will need a #00 Phillips screwdriver to remove the two 2.6 mm screws that are exposed.

Step 2



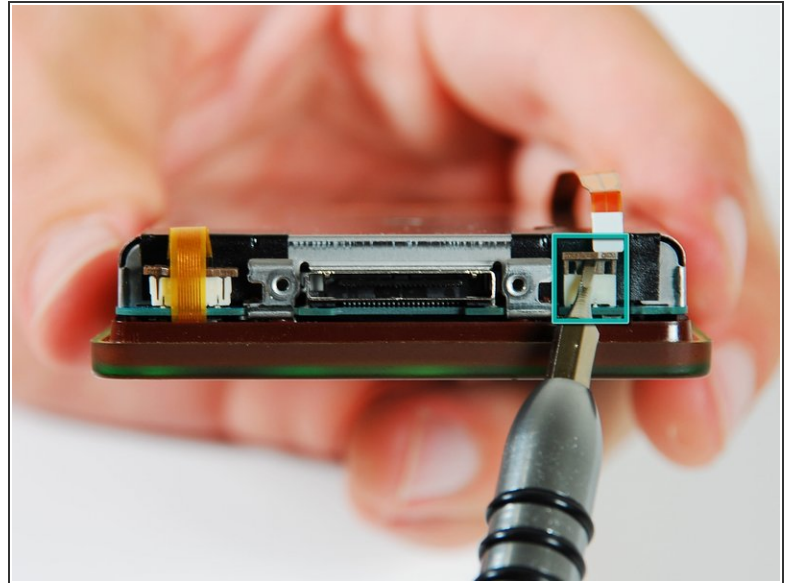
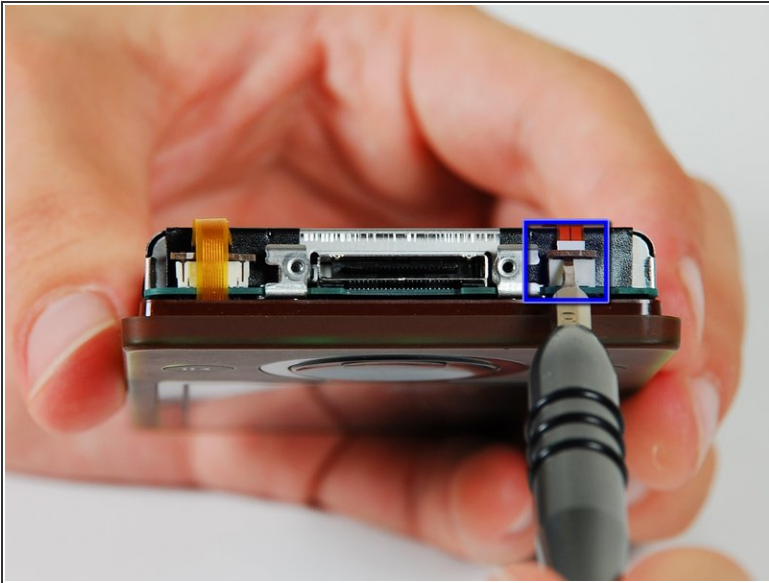
- Use the blue plastic opening tool to slowly work your way around the edges of the case, releasing the front plate from the bottom case.
- ⚠ Be gentle when prying the device open.

Step 3



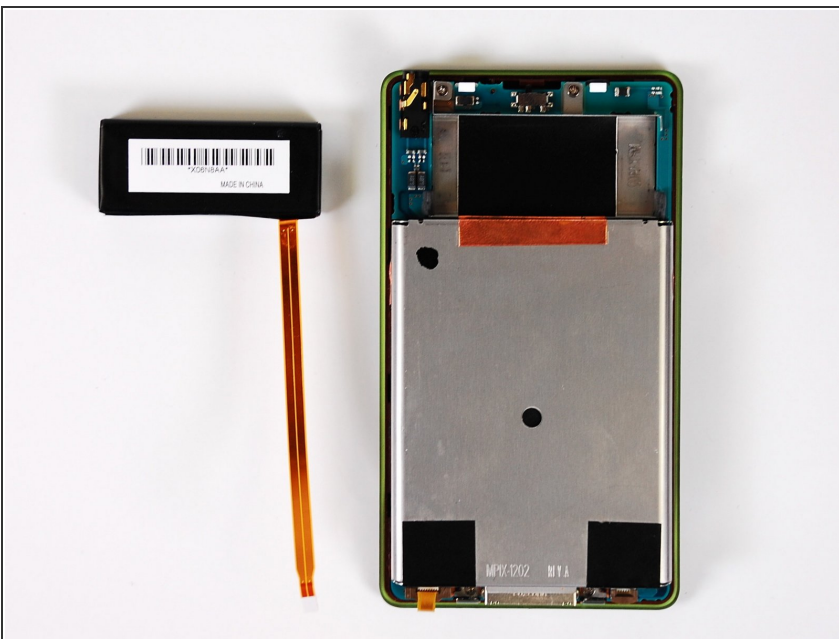
- Turn the Zune over so the screen faces downward. This will ensure the battery does not fall out and pull on the cable.
- ⚠ The battery is not fastened to the inside of the case. It will fall out.
- Pry up from the bottom of the Zune because the headphone jack will not allow you to remove the back case in one pull. You must slide the case up and away from the rest of the Zune.
- ⓘ The case is now separated. You can replace the case, if needed.

Step 4 — Battery



- ✦ With the Zune facing down, as pictured, the battery ribbon cable is attached to the bottom right hand side of the logic board.
 - Use the small flat head screw driver to gently lift the brown clamp.
 - The clamp will release the battery ribbon cable from the logic board, freeing the battery.

Step 5



- You can now replace the battery.
- ⓘ The battery is a Lithium ion 3.7 V.

To reassemble your device, follow these instructions in reverse order.