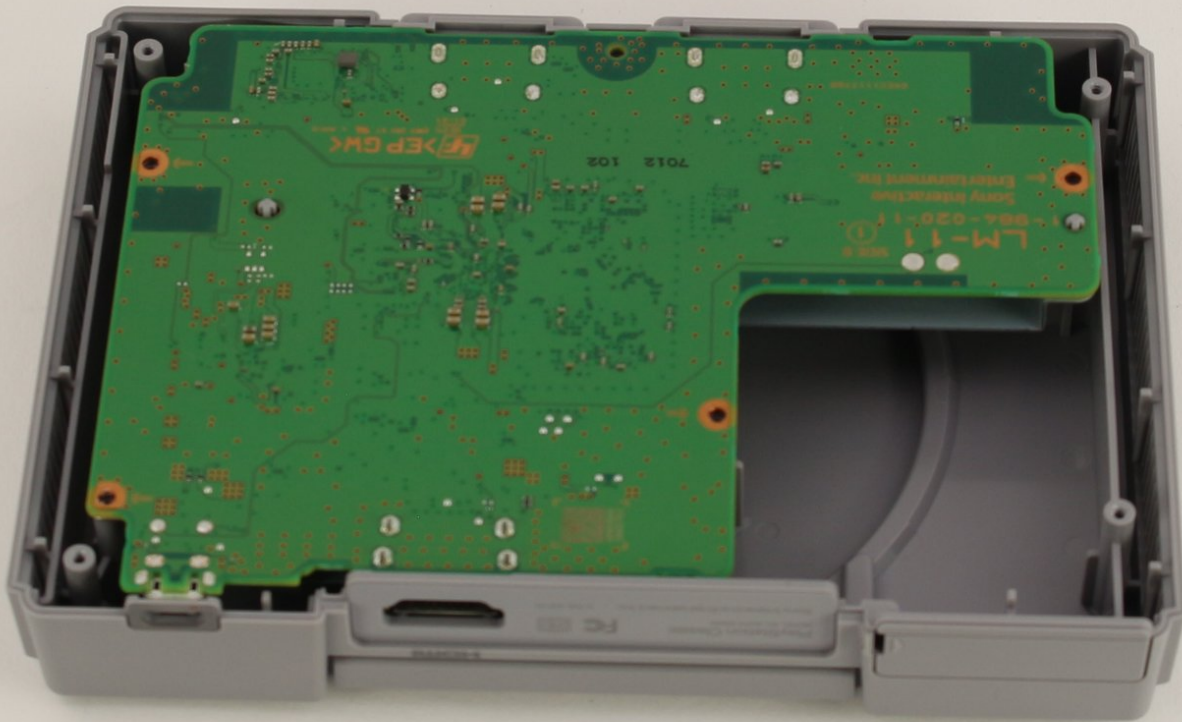




Playstation Classic Motherboard Replacement

This guide will demonstrate how to replace a faulty motherboard in the Sony Playstation Classic.

Written By: Maxwell Webb



INTRODUCTION

This guide will walk you through how to replace a faulty motherboard in the Sony Playstation Classic. Make sure to be gentle when handling your motherboard.

TOOLS:

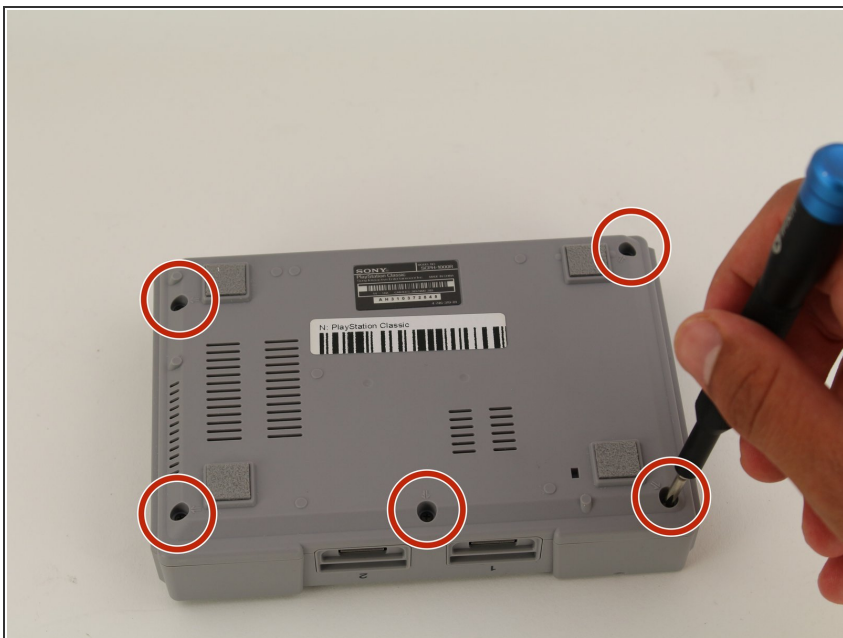
- [Jimmy](#) (1)
- [Phillips #00 Screwdriver](#) (1)

Step 1 — Motherboard



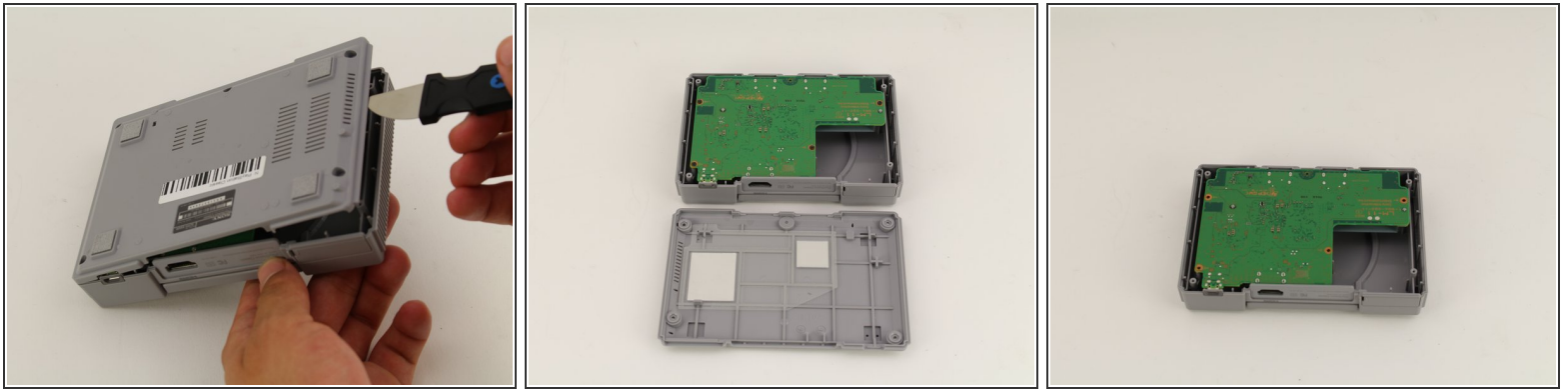
- Flip the console so its back is facing up.

Step 2



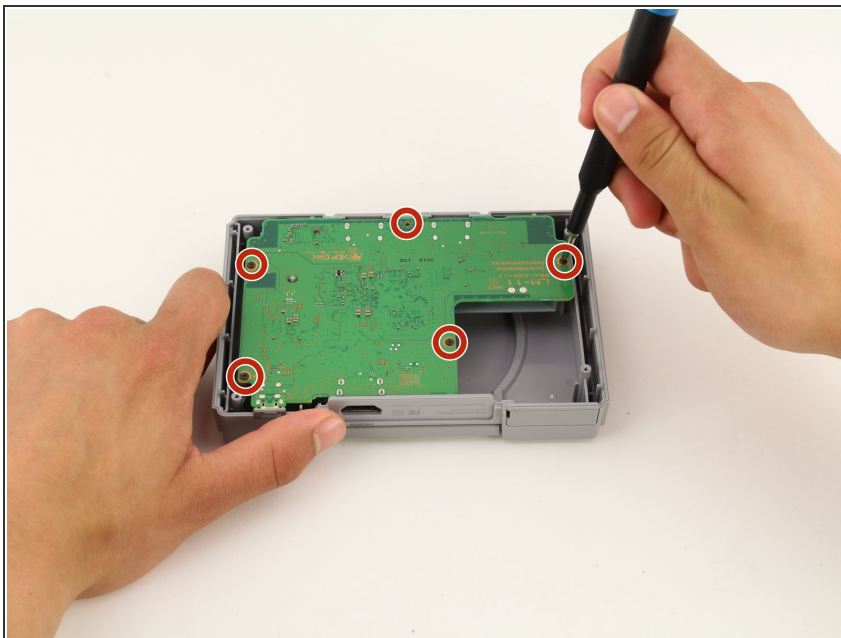
- Remove the five 3mm screws using the Phillips #00 screwdriver.
- ☑ Make sure to keep your screws together in a secure location to avoid misplacement.

Step 3



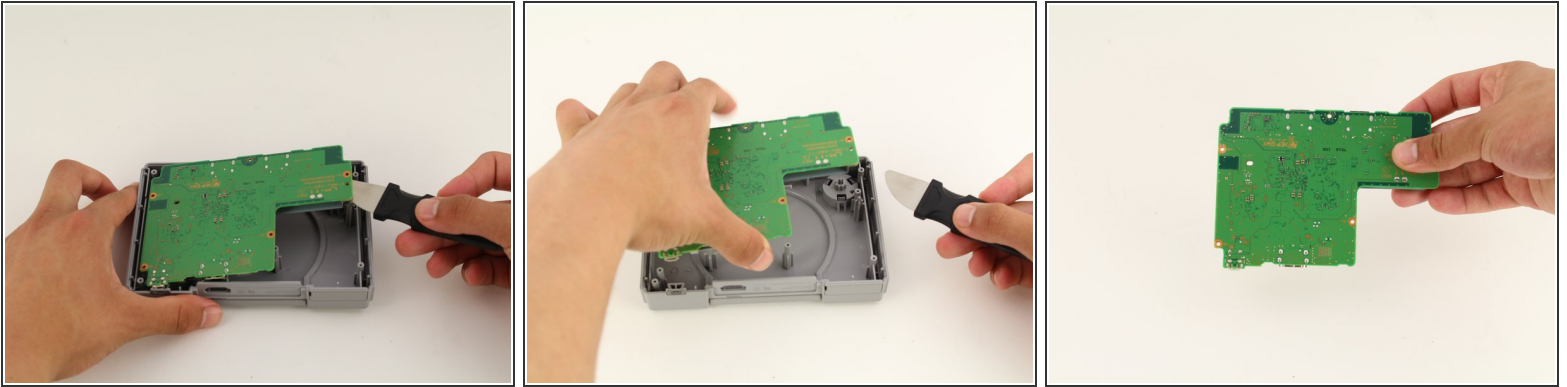
- Remove the back plate from the rest of the console using your hands or the Jimmy tool.

Step 4



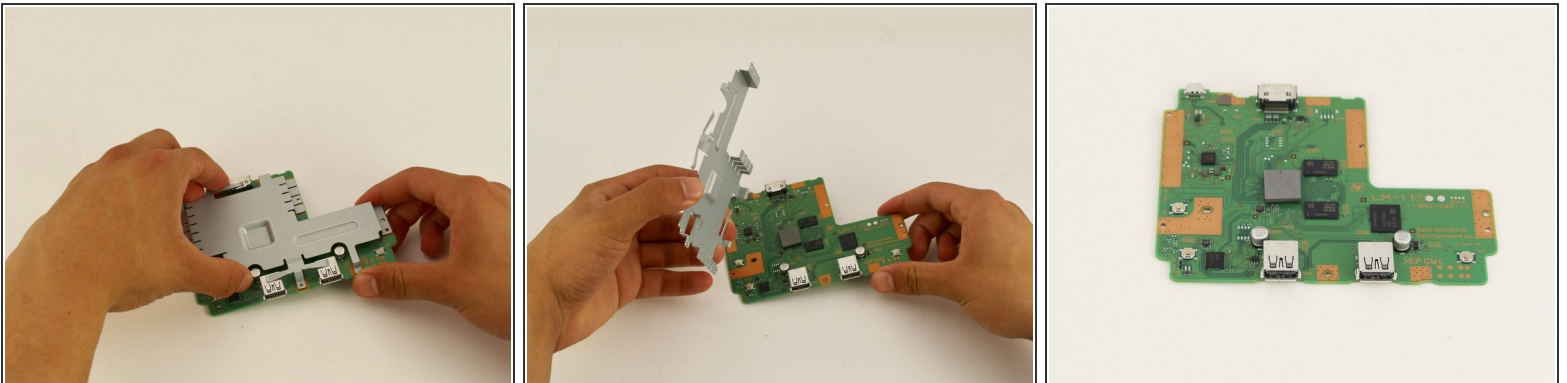
- Unscrew the motherboard's five 3mm screws with the Phillips #00 screwdriver.
- ⚠ Be careful not to apply too much force. The motherboard is flimsy and easy to break.
- ☑ Keep track of your screws once they are removed.

Step 5



- Carefully remove the motherboard from the the rest of the console using your hands or the Jimmy tool.

Step 6



i The motherboard is connected to its metal protective casing with sticky pads. No tools are required to remove it.

- Pull the metal casing off the motherboard.

! Remember to be gentle when handling the motherboard.

To reassemble your device, follow these instructions in reverse order.