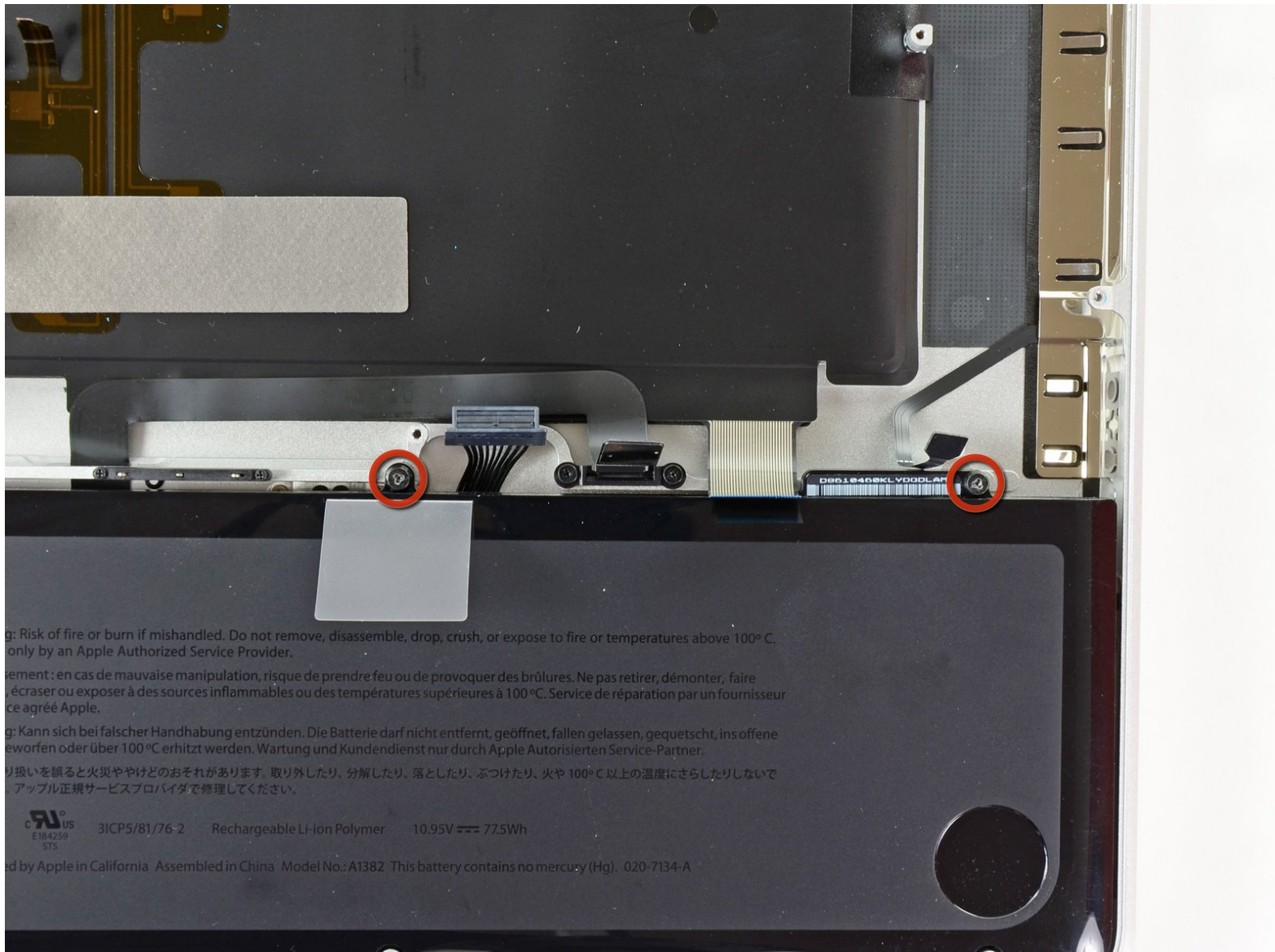




MacBook Pro 15" Unibody Early 2011 Battery Replacement

Prerequisite guide to remove the battery after the logic board has been removed. Used in trackpad removal guide.

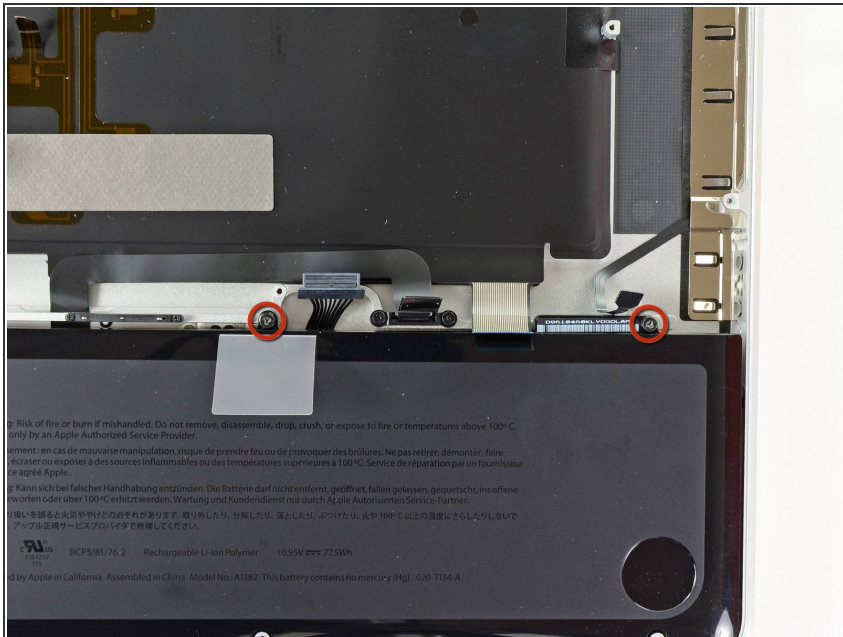
Written By: Andrew Optimus Goldheart



 **TOOLS:**

- [Tri-point Y0 Screwdriver](#) (1)
-

Step 1 — Battery



- Remove the two 7.5 mm (7.2 mm) Tri-point screws securing the battery to the upper case.

Step 2



- Carefully peel the battery warning label off the upper case between the battery and the optical drive to reveal an additional Tri-point screw.
 - Remove the last 7.5 mm (7.2 mm) Tri-point screw securing the battery to the upper case.
- ⚠ Do not remove the label from the battery.

Step 3



- Use the attached plastic pull tab to remove the battery from the upper case.

To reassemble your device, follow these instructions in reverse order.

This document was last generated on 2019-07-16 07:09:24 PM.