



# Emporia Vue Teardown

This guide will show the components of the Emporia Vue energy monitoring base unit.

Written By: Steve Willson



---

## INTRODUCTION

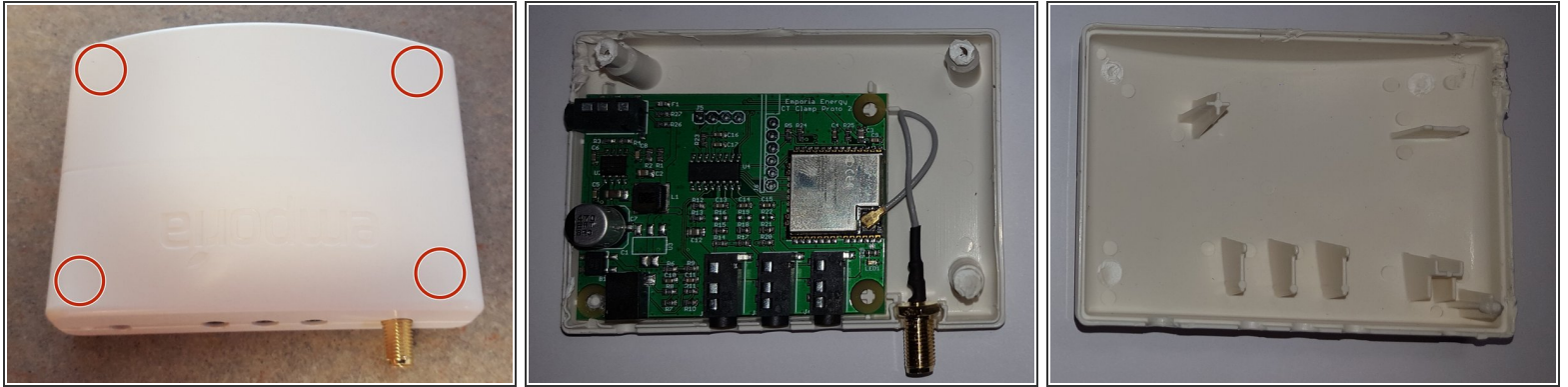
The Emporia Vue is a current monitoring system designed to provide residential users insight into their electricity usage.

---

### TOOLS:

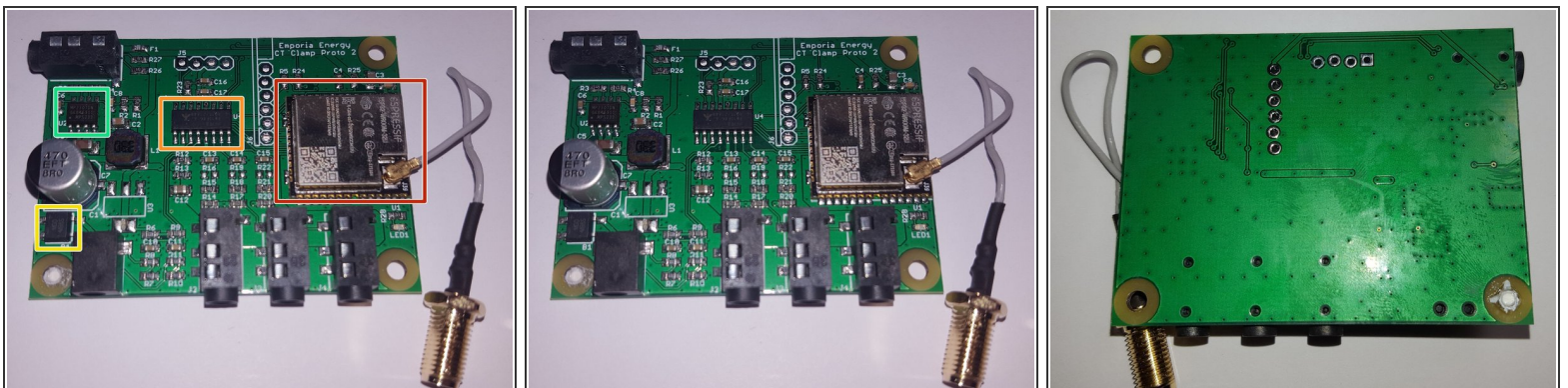
- [Flathead Screwdriver](#) (1)
-

## Step 1 — Pry open the case



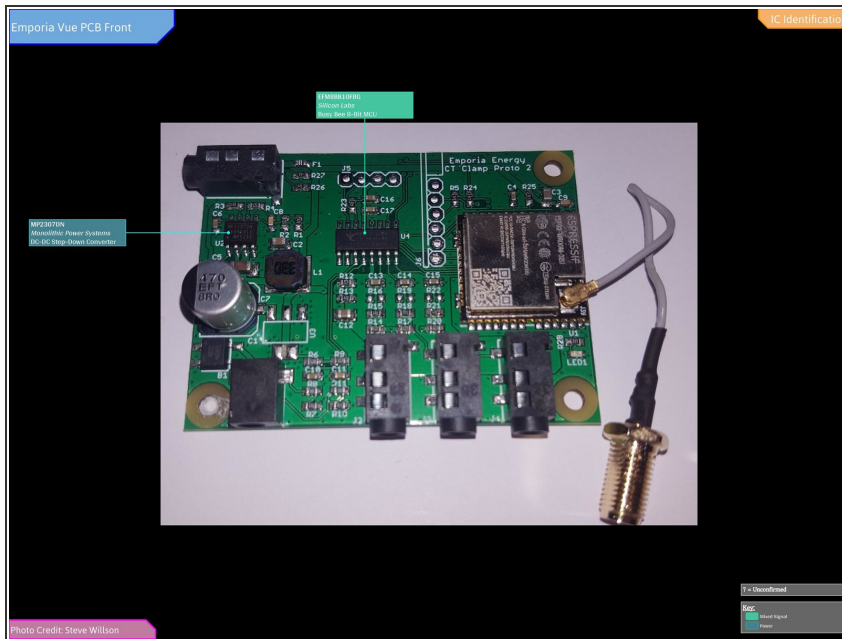
- The Emporia Vue is not designed to be taken apart. The case must be damaged to open it up.
- The red circles indicate where the case is glued together with supports.

## Step 2 — Open the case



- The following components are on the inside of the case.
- ESPRESSIF ESP32-WROOM-32U
- [Silicon Labs EFM8 'Busy Bee' Microcontroller](#)
- MDD MB65
- [Monolithic Power Systems step down converter](#)

## Step 3



- Full IC Identification:

ⓘ You may need to enlarge it to view the text.