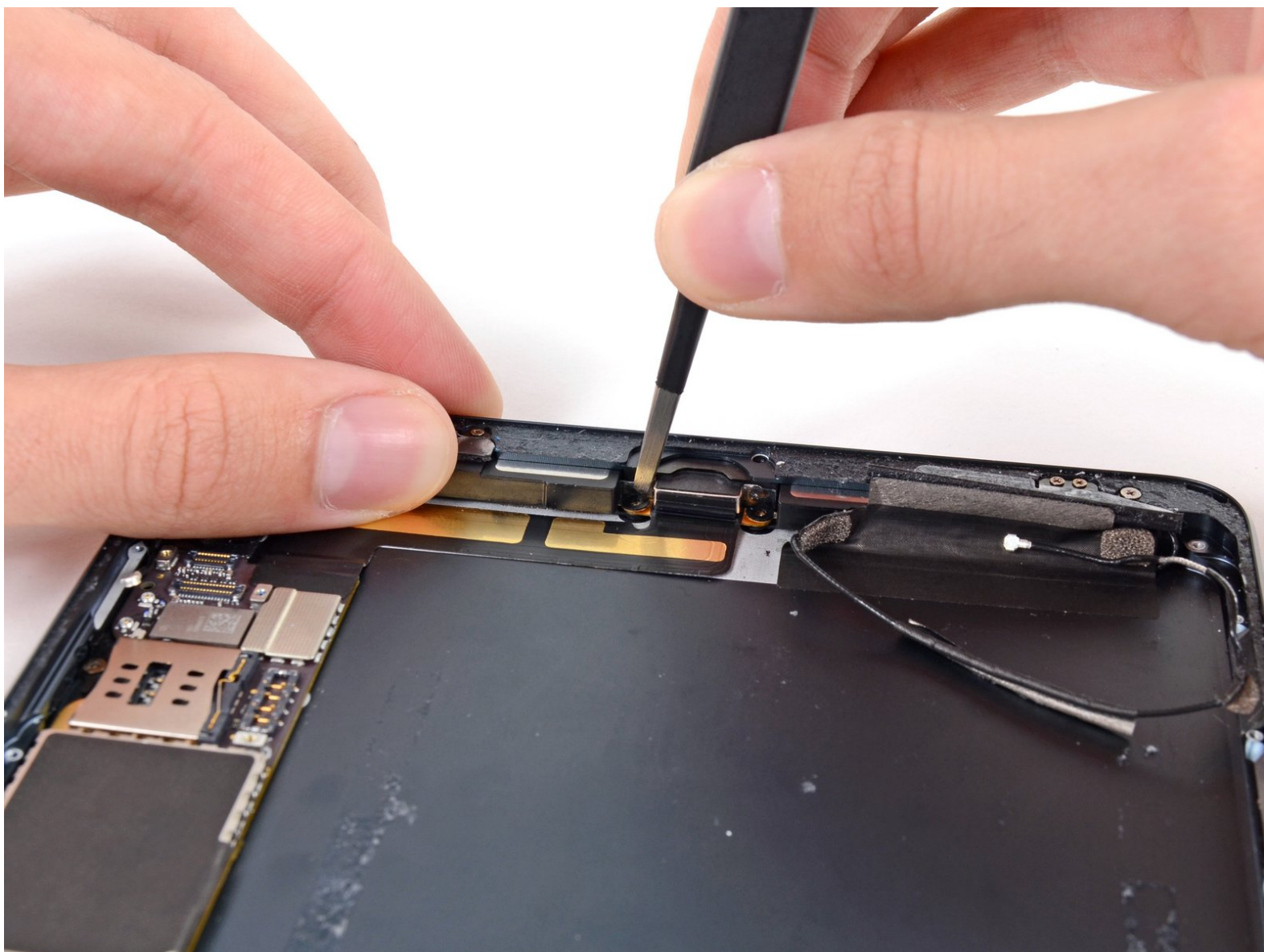




iPad Mini CDMA Plastic Covers Replacement

Prereq only.

Written By: Walter Galan



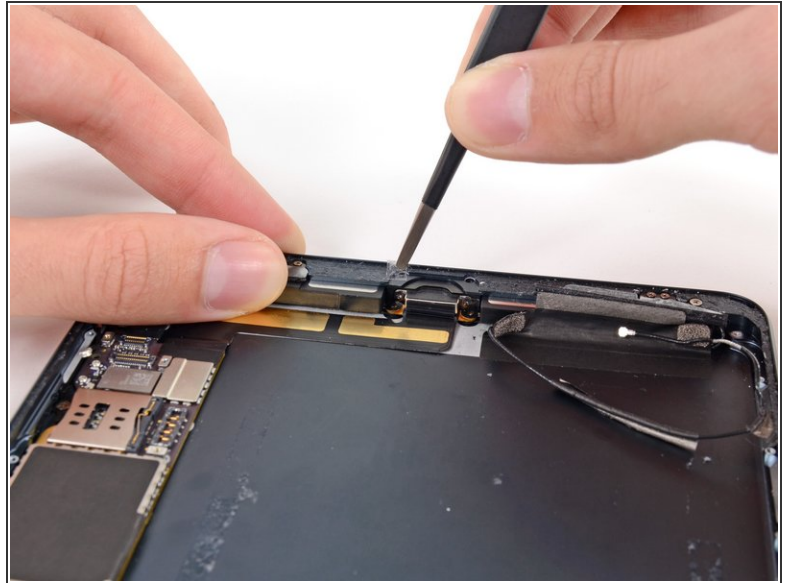
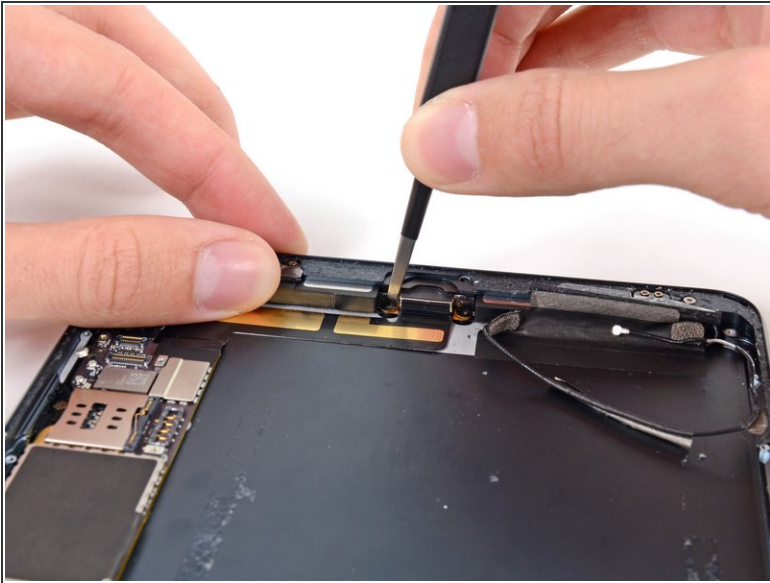
INTRODUCTION

Prereq only.

TOOLS:

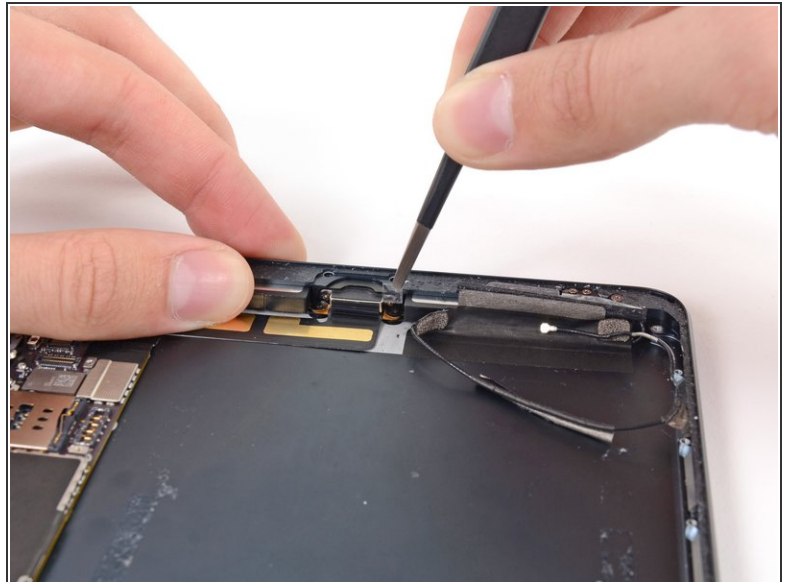
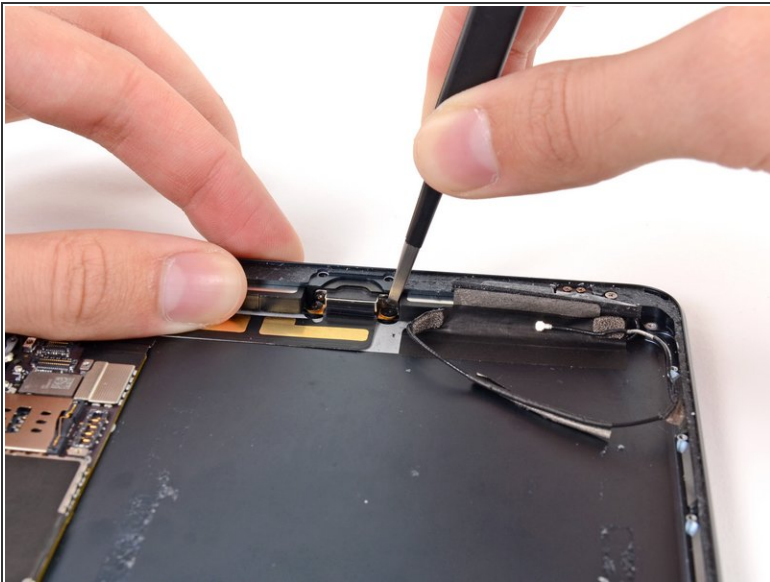
- [Tweezers](#) (1)
-

Step 1 — Plastic Covers



- Use tweezers to remove the small plastic cover on top of the horizontal screw on the right side of the Lightning connector housing.

Step 2



- Remove the plastic covering from the left side of the Lightning connector housing.

To reassemble your device, follow these instructions in reverse order.