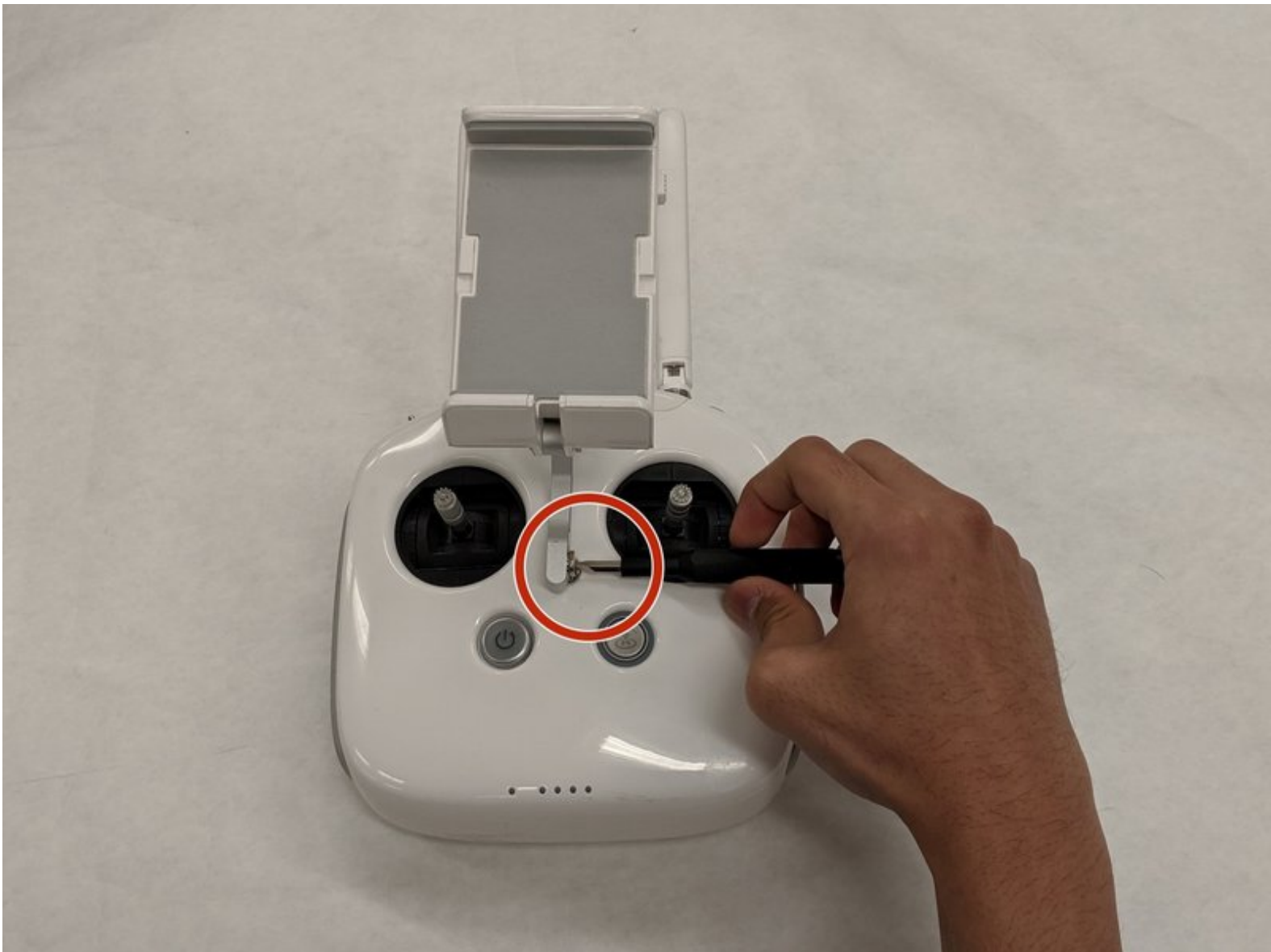




# DJI Phantom 4 Advanced Remote Controller Mobile Device Holder Replacement

This guide will show you how to replace the Mobile Device Holder (Smartphone Holder) in your DJI Phantom 4 Advanced Remote Controller.

Written By: Abdullah Muslih Abdul Samad



This document was generated on 2019-09-18 01:11:35 PM (MST).

## INTRODUCTION

This guide will demonstrate step by step detailed instructions on how to safely remove and replace the Mobile Device Holder of a DJI Phantom 4 Advanced Remote Controller.

Someone who might want to replace the mobile device holder is because it doesn't clamp the phone properly or it is broken.



### TOOLS:

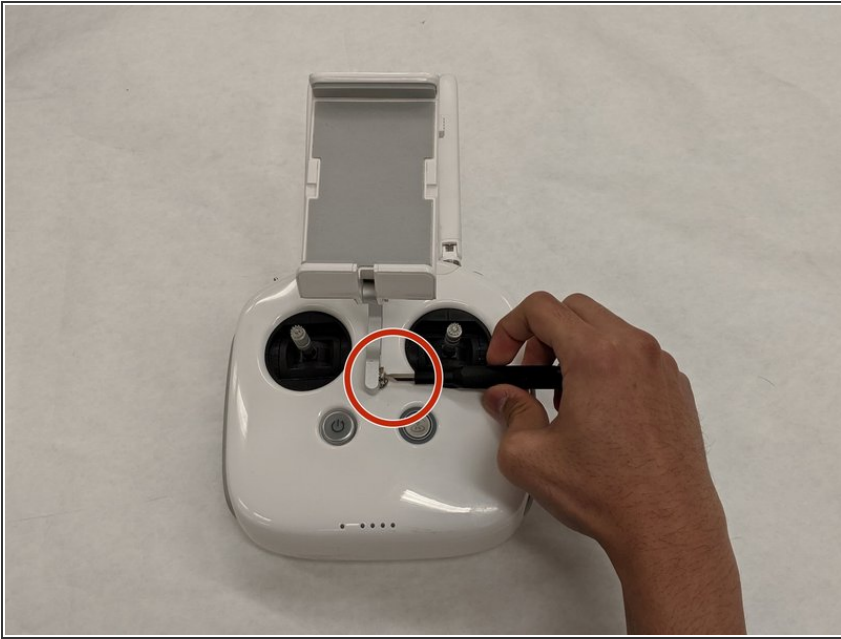
- [Flathead Screwdriver](#) (1)



### PARTS:

- [DJI Phantom 4 Pro Remote Controller Mobile Device Holder](#) (1)

## Step 1 — Mobile Device Holder



- Remove the 6.7 mm Flathead screw using a Flathead 4 mm screwdriver.

## Step 2



- Loosen the bolt that is connected to the body by hand.

### Step 3



- Lift up and disconnect the bracket from the body.

### Step 4



- Replace the mobile device holder with a new one.

To reassemble your device, follow these instructions in reverse order.