



LG K20 PLUS Rear-Facing Camera Replacement

Written By: Patrick



 **TOOLS:**

- [Phillips #00 Screwdriver](#) (1)
 - [iFixit Opening Picks set of 6](#) (1)
 - [Halberd Spudger](#) (1)
-

Step 1 — Remove the back cover and battery



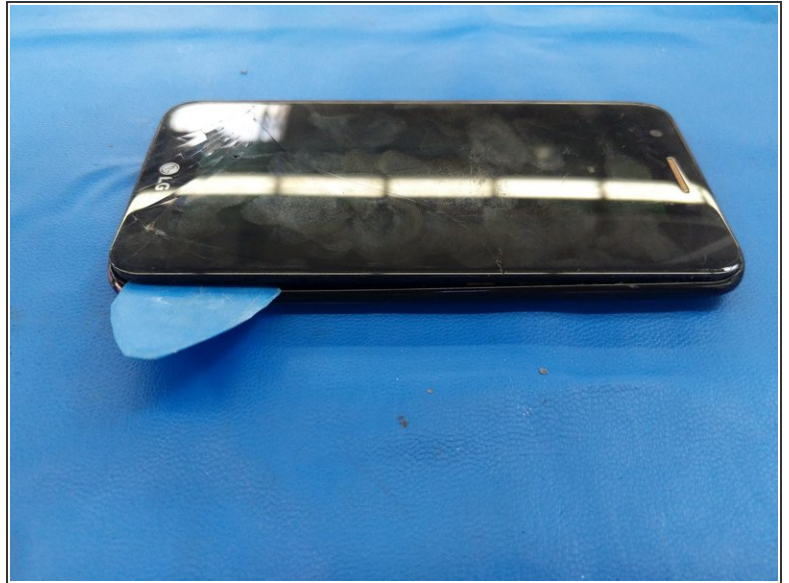
- Remove the back cover by inserting a fingernail or opening pick here and disengaging the plastic clips.
- Lift battery up here

Step 2 — Midframe



- Remove 11 Philips screws.

Step 3



- Use fingernails or insert an opening pick into the gap between the digitizer and the midframe and pull the midframe outwards to disengage the plastic clips.
- Carefully disengage the clips on the bottom as the headphone jack goes through the midframe.
- Once all the clips have been disengaged, move the midframe outwards and downwards to disengage it from the headphone jack.

Step 4 — Rear-Facing Camera



- Use a Halberd spudger or an opening pick to disconnect the front camera flex from its connector on the motherboard.

To reassemble your device, follow these instructions in reverse order.