



iPad Mini CDMA Small Metal Bracket Replacement

Prereq for removing logic board with no battery.

Written By: Walter Galan



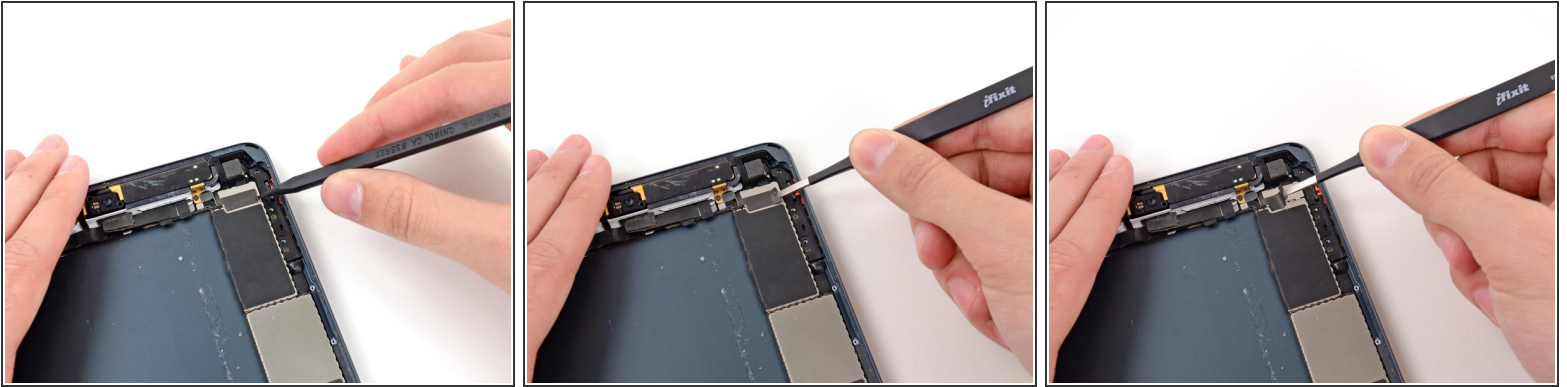
INTRODUCTION

Prereq for removing logic board with no battery.

TOOLS:

- [iFixit Opening Tools](#) (1)
 - [Tweezers](#) (1)
 - [Spudger](#) (1)
-

Step 1 — Small Metal Bracket



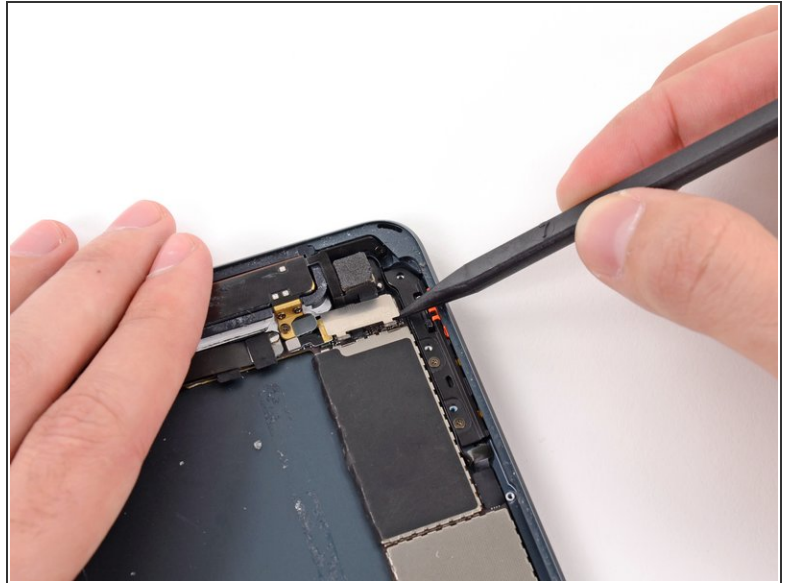
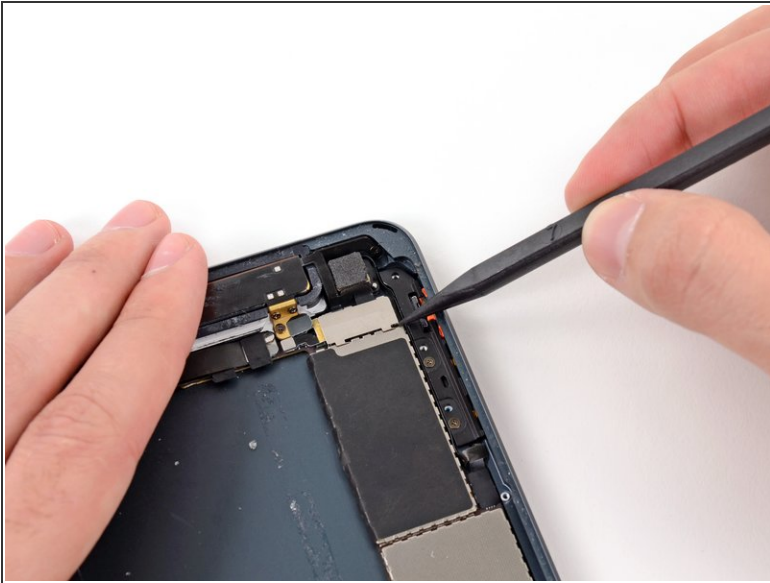
- Use the tip of a spudger to start peeling up the right side of the black tape covering the small metal bracket.
- Use tweezers to peel the tape up the rest of the way, and remove it from the bracket.

Step 2



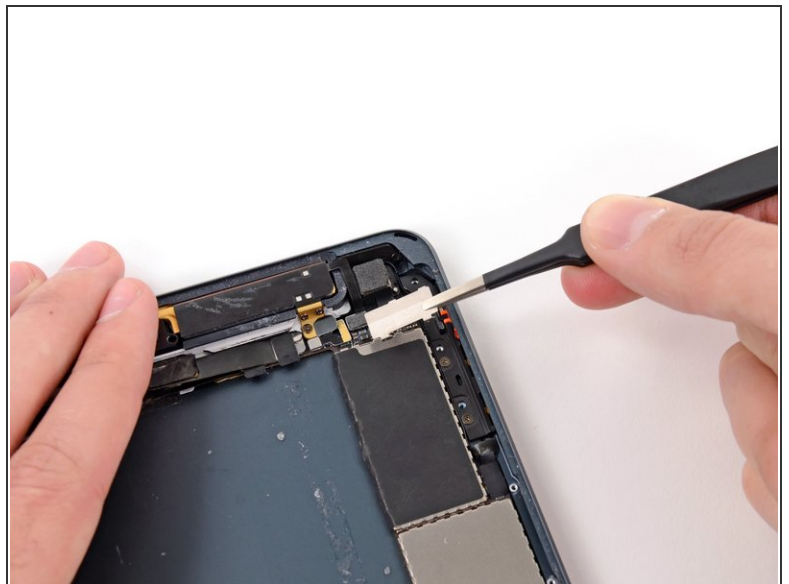
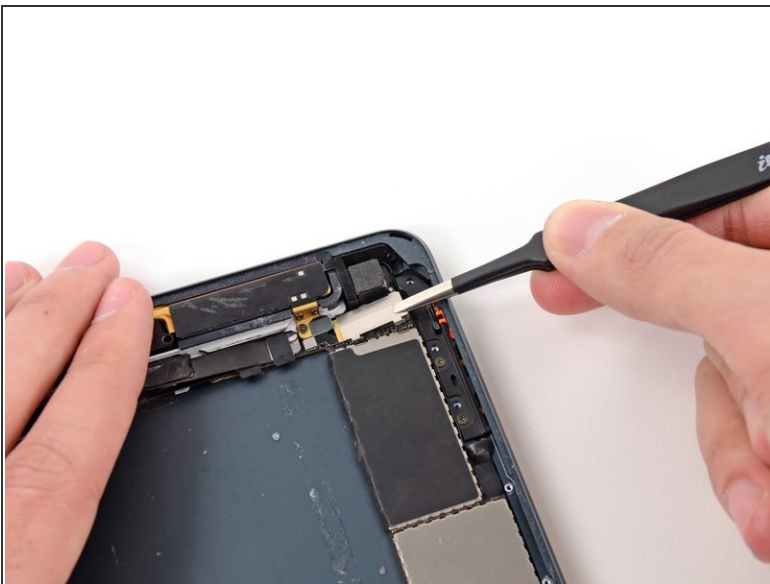
- Use a plastic opening tool to push the bracket slightly to the left.

Step 3



- Use a spudger tip to lift up the lower side of the bracket.

Step 4



- Remove the bracket with tweezers.
- ☑ During reassembly, hook the top edge of the plate in place first, then lower the bottom into its slots.

To reassemble your device, follow these instructions in reverse order.

This document was last generated on 2019-07-22 09:45:58 PM.
