



Cambridge Soundworks 700 Series Repair

Tear down the Cambridge Soundworks Radio/CD player to the point where the volume knob can be repaired. Should apply to models 740/745/745i/765 and more.

Written By: Bryce Nesbitt

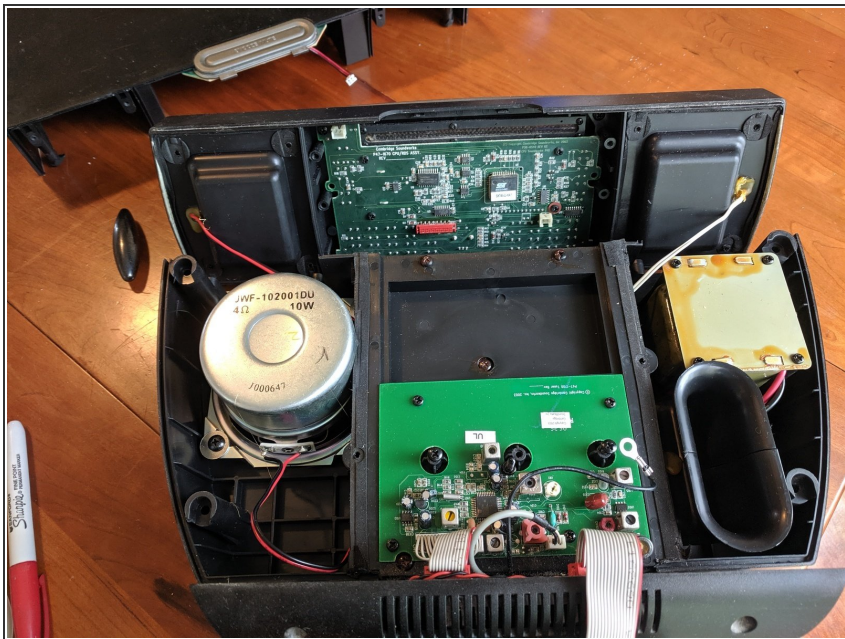


Step 1 — Getting In



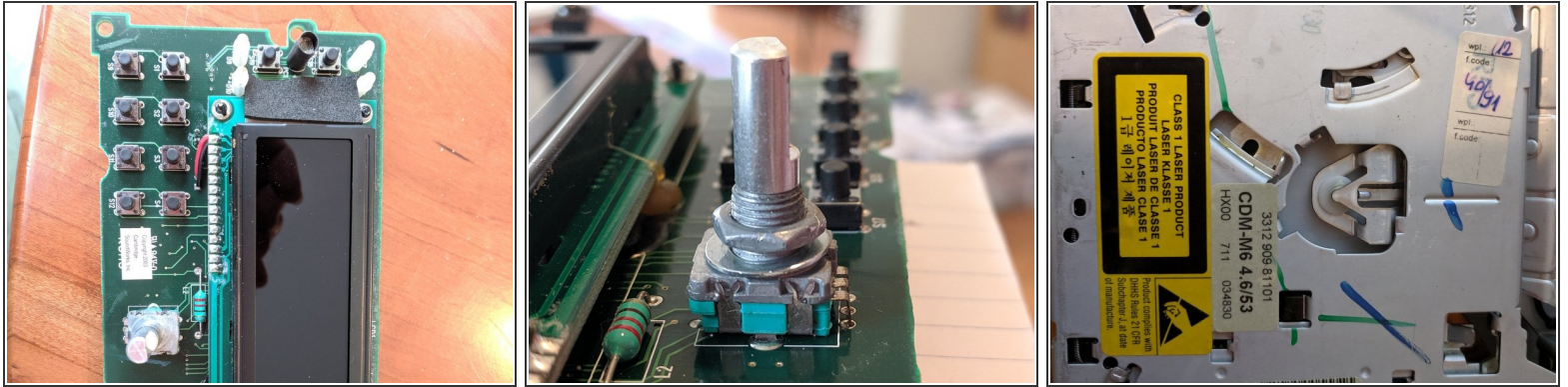
- This device has a lot of screws and layers, and some hidden tricks. The first step is to pop off the speaker grilles, and remove just the top two screws.

Step 2



- Here's the inside, with the top cover full removed.

Step 3 — Getting Deeper



- Some detail photos of the front display/volume knob and the CD player.

To reassemble your device, follow these instructions in reverse order.