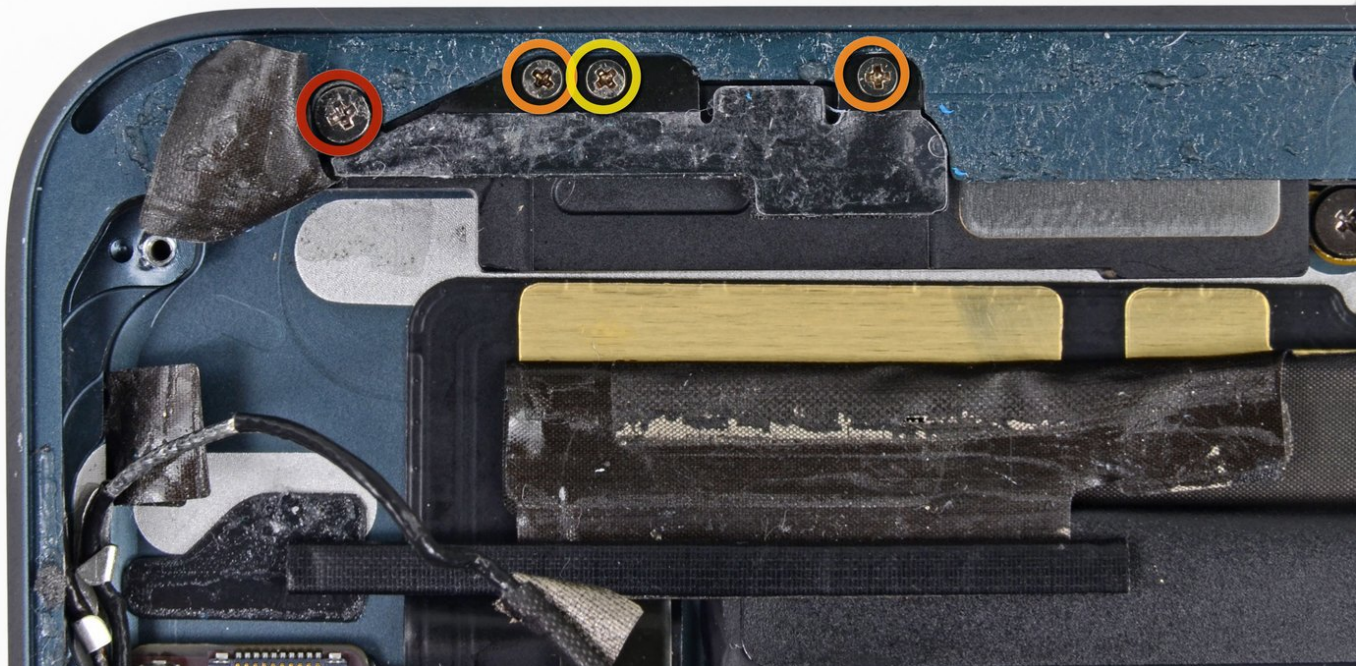




iPad Mini CDMA GPS Antenna Replacement

Prereq only, does not remove antenna, battery is in.

Written By: Walter Galan



INTRODUCTION

Prereq only, does not remove antenna, battery is in.

TOOLS:

- [Phillips #00 Screwdriver](#) (1)
 - [Spudger](#) (1)
-

Step 1 — GPS Antenna



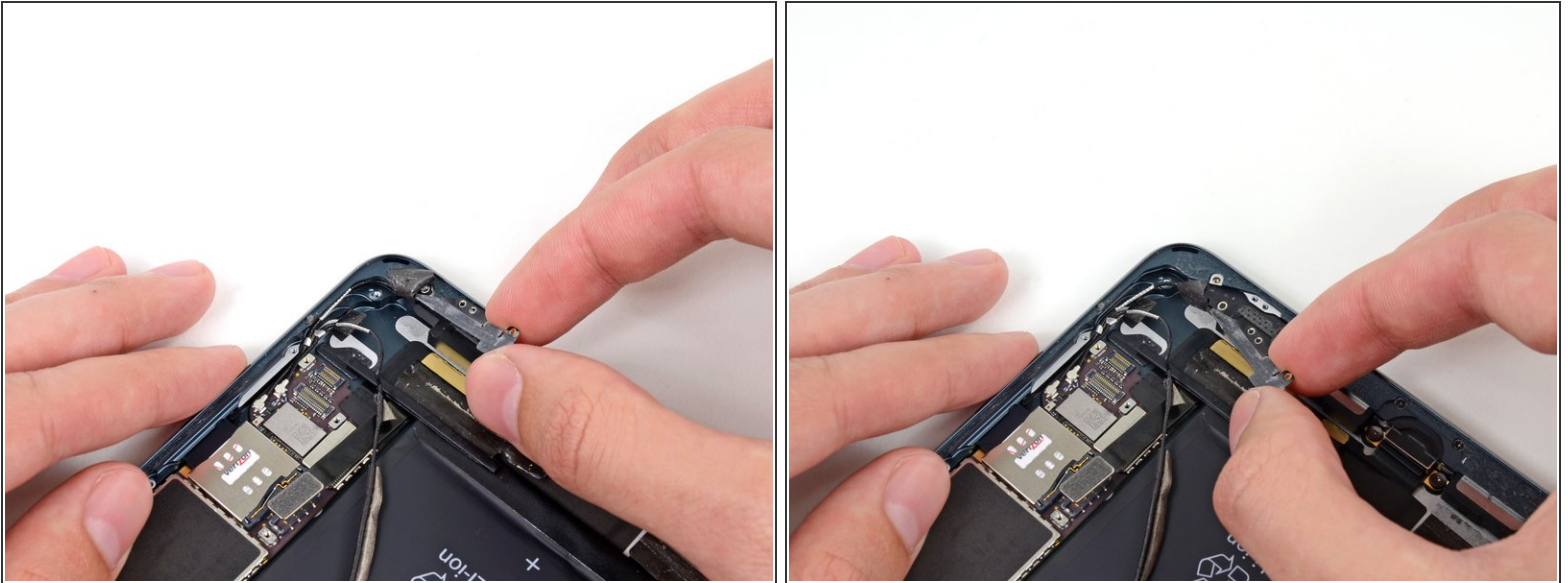
- Remove the following screws securing the GPS antenna to the rear case:
 - One 2.5 mm Phillips #00
 - Two 1.1 mm Phillips #00
 - One 1.2 mm Phillips #00

Step 2



- Use the flat end of a spudger to loosen the foam adhesive holding the GPS antenna to the right speaker.

Step 3



- Gently de-route the antenna cable from the bottom right corner of the rear case.
- Move the antenna out of the way of the right speaker.

To reassemble your device, follow these instructions in reverse order.