



# How to Manually Eject a Stuck Disc in a PlayStation 4

This guide, you will learn how to eject a disc from your PlayStation 4. This will help you if your eject button is currently faulty, and you need that disc.

Written By: Kyle Webb



## INTRODUCTION

You know how annoyed you get when you put a Pound or Quarter into the vending or washing machine and it gets stuck? There's a quiet rage that boils inside you. Now, imagine that pound/quarter is a forty five pound/sixty dollar video game, and it's stuck inside your brand new, two hundred-fifty pound/four hundred dollar PlayStation 4 system.

There will probably never be a video gaming console that doesn't eat a disc every now and then, at least until they get rid of they optical drive altogether. Until then, expect your hungry PS4 to gorge itself on your precious DVDs, Blu-rays, and game discs.

We understand how frustrating it is when your disc gets stuck inside your games console, and your eject button don't work. YES! You start to panic! Well, keep reading and I will show you how to eject your disc manually, with one helpful little built-in tool!

---

### TOOLS:

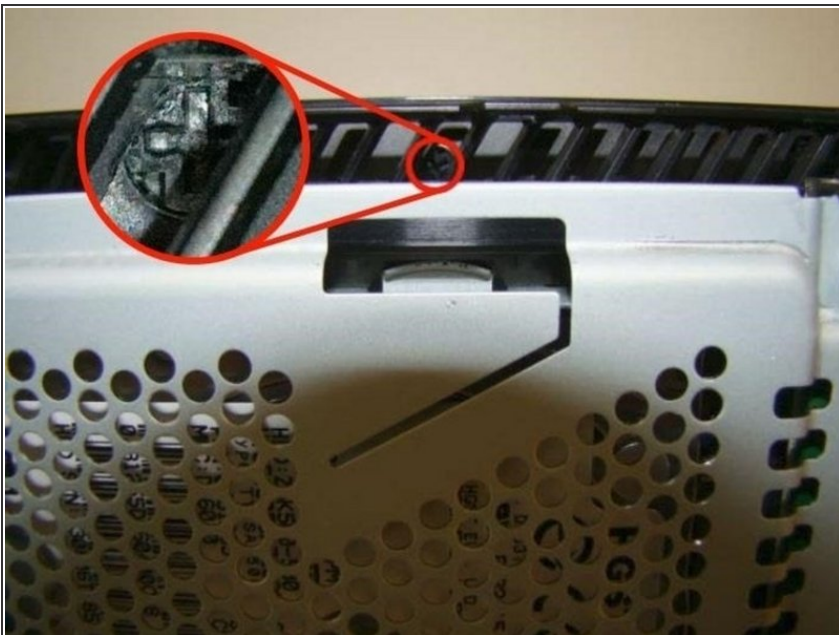
- [Phillips #1 Screwdriver](#) (1)
-

## Step 1 — Removing the Cover



- Use your hands to remove the shiny part of the PS4 cover. It should come off rather easily.
- As you can see in the second image, the cover should just pull off with ease, and a little force.
- **IF YOU ARE STRUGGLING TO REMOVE THIS COVER, PLACE THE PLAY-STATION ON A RAISED LEDGE TO GIVE YOURSELF A LITTLE MORE LEVERAGE**

## Step 2 — Locating Phillips Screw



- There is a small black screw located in-between the vents. You will see two sections of tightly packed slots and on single slot somewhat separated. This is where the screw is located.
- **PLEASE BE CAREFUL WITH THIS SCREW AS IT IS VERY EASY TO BE ROUNDED OFF.**

### Step 3 — Rotate Counter-clockwise



- Use a Phillips screwdriver and rotate the screw counter-clockwise. This shouldn't require very much pressure and you should see the stuck disc slowly come out of its slot after a few twists.
- **THE MORE PRESSURE THAT YOU USE, THE MORE CHANCE YOU RUN OF ROUNDING OFF THE HEAD**
  - That is it! You are now done!

To reassemble your device, follow these instructions in reverse order.