



# LCD LG 37LF65 Capacitor replacement

Replace faulty capacitors in your LG LCD TV.

Written By: eugl18



## INTRODUCTION

The TV turns off by itself after a while or the TV will not start, blown off capacitors could be the source off error.

### TOOLS:

- [Large Needle Nose Pliers](#) (1)
- [Soldering Iron](#) (1)

### PARTS:

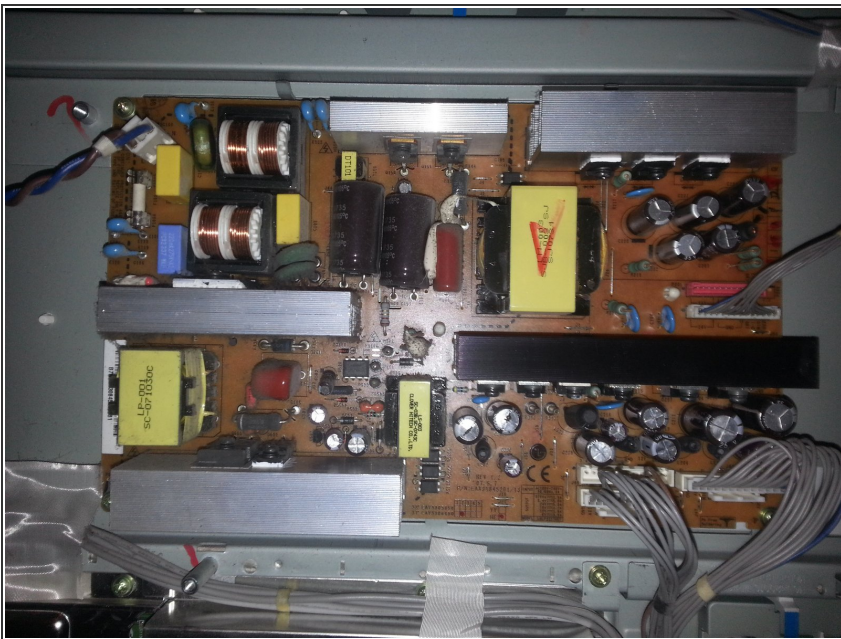
- [470uF 10V](#) (2)
- [2200uF 10V](#) (2)
- [3300uF 10V](#) (2)
- [470uF 25V](#) (1)
- [2200uF 25V](#) (1)
- [470uF 35V](#) (2)
- [680uF 35V](#) (4)
- [1000uF 35V](#) (1)

## Step 1 — Capacitors



- MAKE SURE THAT YOUR DEVICE IS UNPLUGGED!
- Open the case carefully while loosening the marked screws.

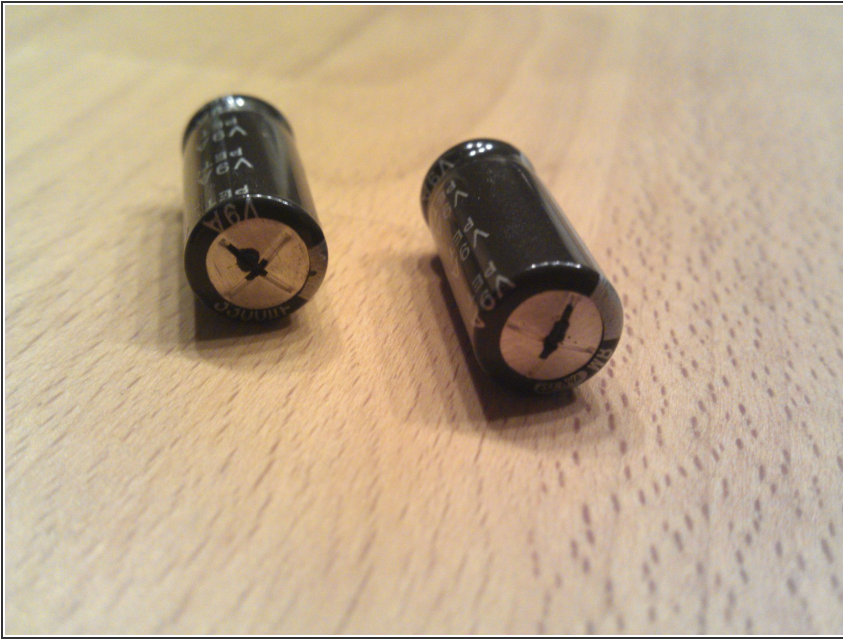
## Step 2



- Check the power-board. If there are any blown-up capacitors, you should replace them.
- For removing the capacitors, remove the board, take a soldering bolt and heat the solder points at the back of the board.
- Insert the replacement capacitors and solder it. Check the poles!



### Step 3



- Note: If you are not sure about the condition of the capacitors you can prove it with a good measuring device after the expansion.

Not all capacitors are need in any case. To reassemble your device, follow these instructions in reverse order.