



# Nikon D5100/D3100 SD Memory Card Door Replacement

Replace the SD Memory Card Door in your Nikon D5100. Additional steps (5-6, I found when I replaced the Memory Card Door in my D3100.

Written By: Joshua L



## INTRODUCTION

This guide shows to how replace a broken memory card door on the Nikon D5100. I ASSUME the procedure is the same for the D5000, D5200, D3000, D3100, and D3200. Your results may vary.

- **D3100 differences:** \*\*\*

Step 5 and 6 are differences for the D3100. The other steps still apply to the D3100.

Step 5 should be read before doing step 4 for the D3100.

---

### TOOLS:

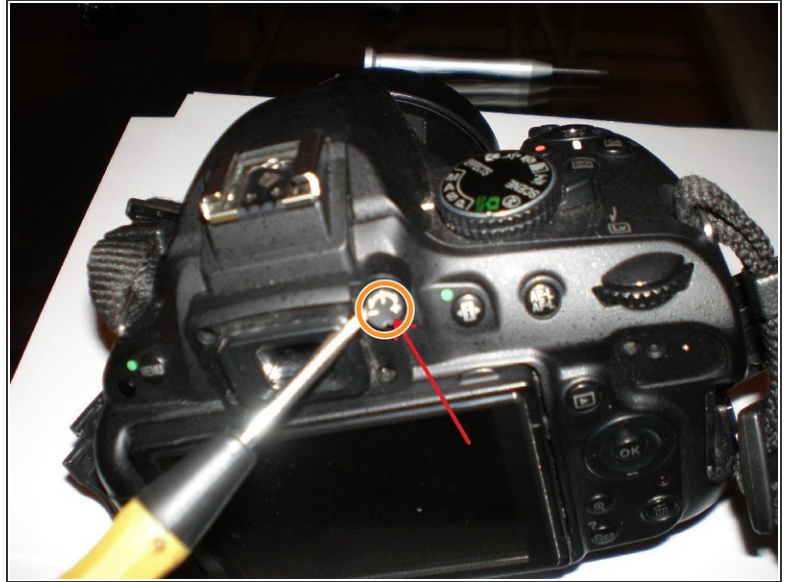
- [Pick Tool](#) (1)
  - [Phillips #00 Screwdriver](#) (1)
  - [Tweezers](#) (1)
-

## Step 1 — SD Memory Card Door Replacement



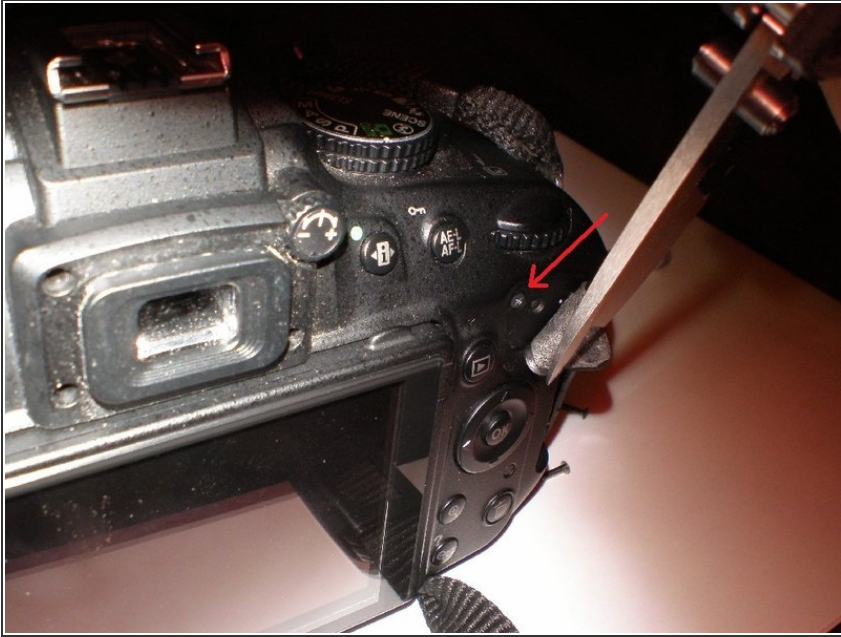
- **FIRST:** open the memory card door and take a good long look at how the spring is installed. There are two "feet" coming off of the spring that need to be installed into two "insets" on the rear camera cover, this has to be done before you put the cover back on.

## Step 2



- Remove the battery and memory card before you begin.
- Remove 3 long screws behind the eye-piece (note that the one on the top-left is slightly longer than the rest and uses a different thread).
- Then remove the sticker over the diopter (a pick tool is helpful here) and remove the silver screw behind it.

### Step 3



- Peel the rubber thumb-grip back slightly, there's a short screw there closest to the left side of the thumb-grip. This one seems to be slightly thicker than the ones in the next step, keep it separate.

### Step 4



- Remove 3 short screws from the bottom of the rear cover.

## Step 5 — D3100 Difference for Step 4



- On the D3100 model there are only the two screws on the bottom, they are the two on the left in the picture from the previous step.

## Step 6 — D3100 Additional Step



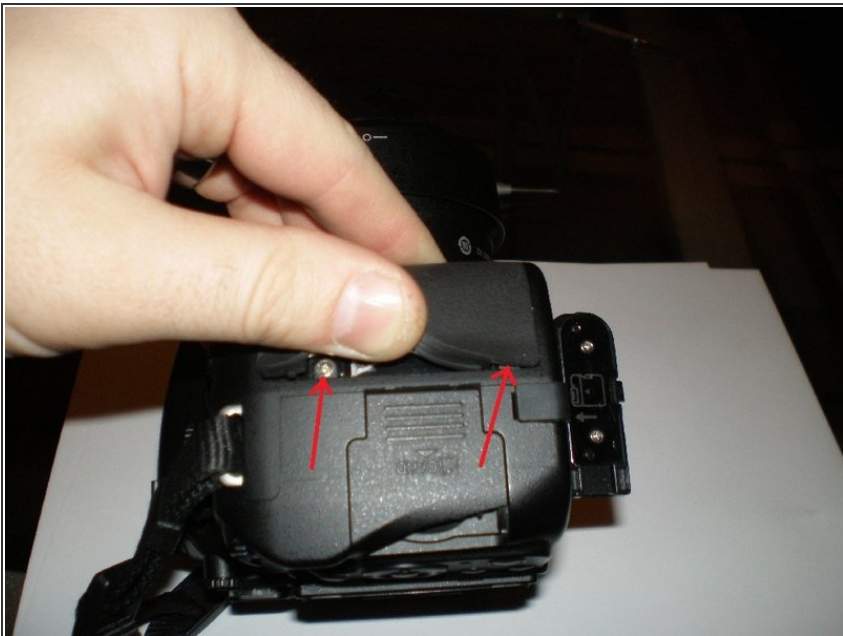
- If there is a strap attached to the camera, remove the strap. There is a screw in the hole where the strap attaches. There is one screw on each side. I do not have a picture but they are easy to see. Remove both screws.

## Step 7



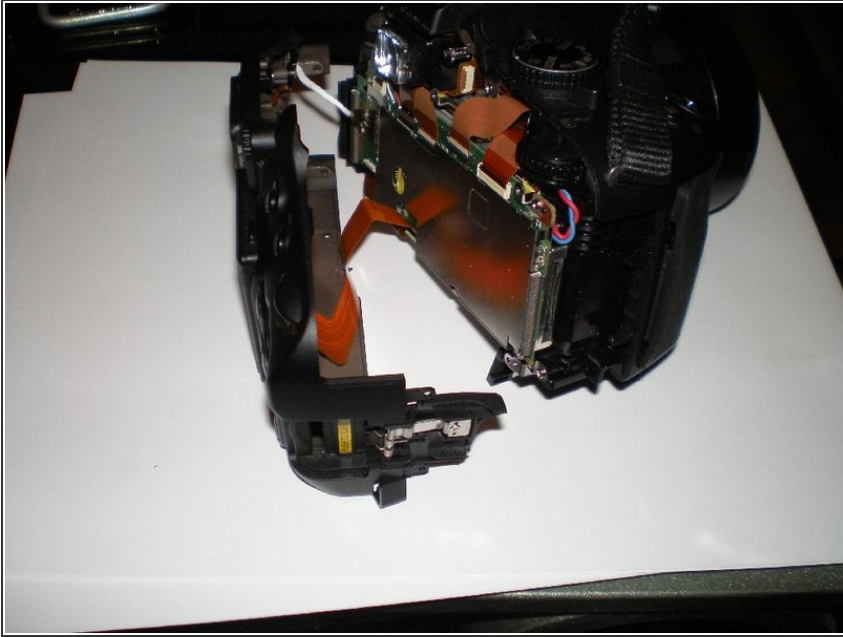
- Remove 2 long screws from the left side of the camera.

## Step 8



- Peel back the rubber grip on the right side of the camera, closest to the top and bottom behind the rubber grip there is a silver screw (2 total).

## Step 9



- Once you remove those screws (12 altogether) you can pull the back cover off the camera, it is still attached to the camera body via two cables so be careful not to damage them. You will then see that the memory card door slides right out between the rear cover and the camera body.

## Step 10



- Install the new door making certain to put the spring back the way it was, with the two feet installed into the insets. Put the rear cover back on and test the memory card door to make sure it's working, then install all of the screws back where they went. Reapply adhesive to the rubber grips and diopter cover if desired.



To reassemble your device, follow these instructions in reverse order.

This document was last generated on 2017-06-18 04:37:23 AM.