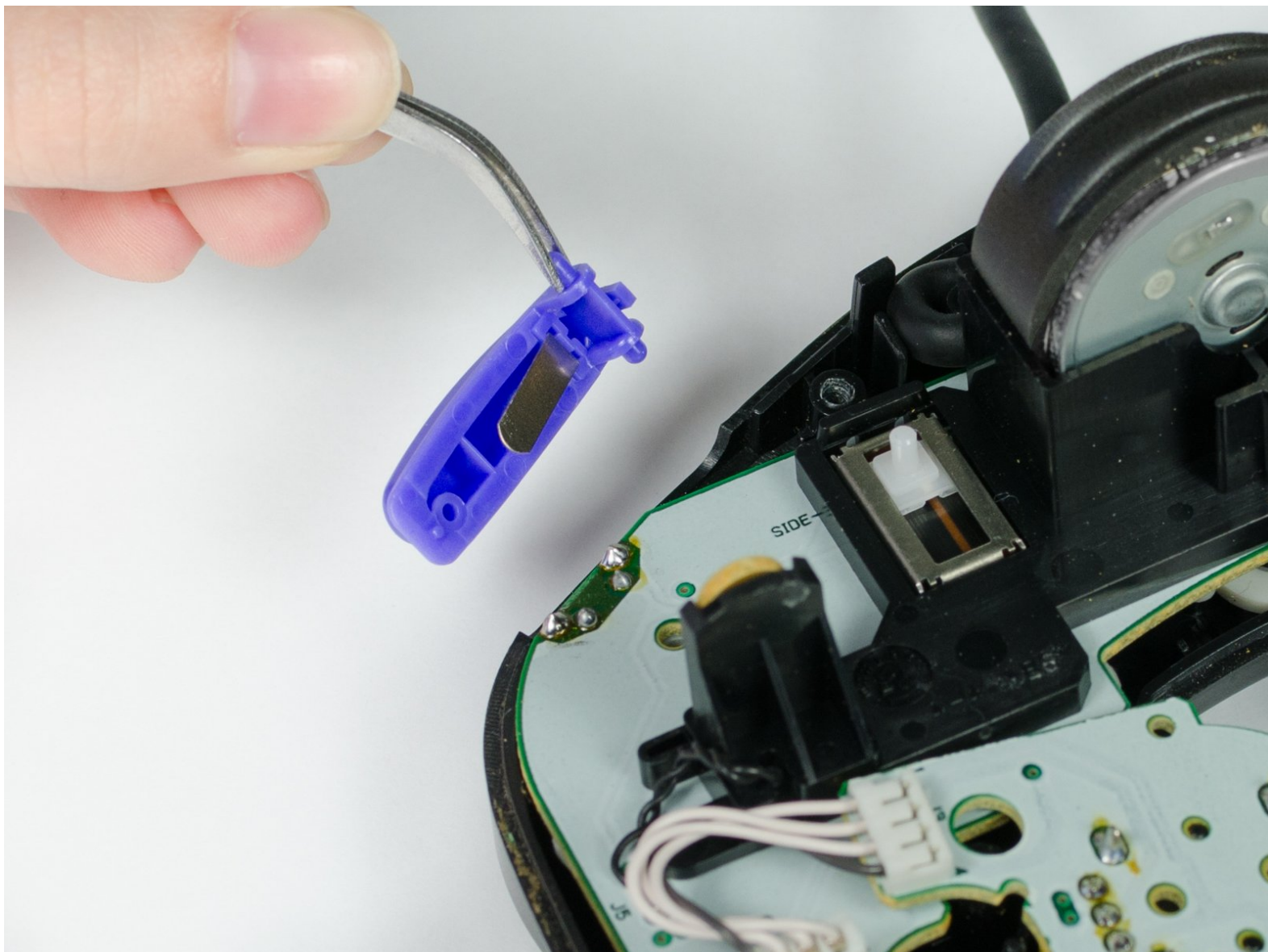




Nintendo GameCube Controller Z Button Replacement

This guide demonstrates proper removal of the purple Z-button on the top right of the controller.

Written By: Sean Michel



INTRODUCTION

The Z button is located above the right trigger but functions as a button.

TOOLS:

- [Tri-point Y0 Screwdriver](#) (1)
 - [Tweezers](#) (1)
-

Step 1 — Back Panel



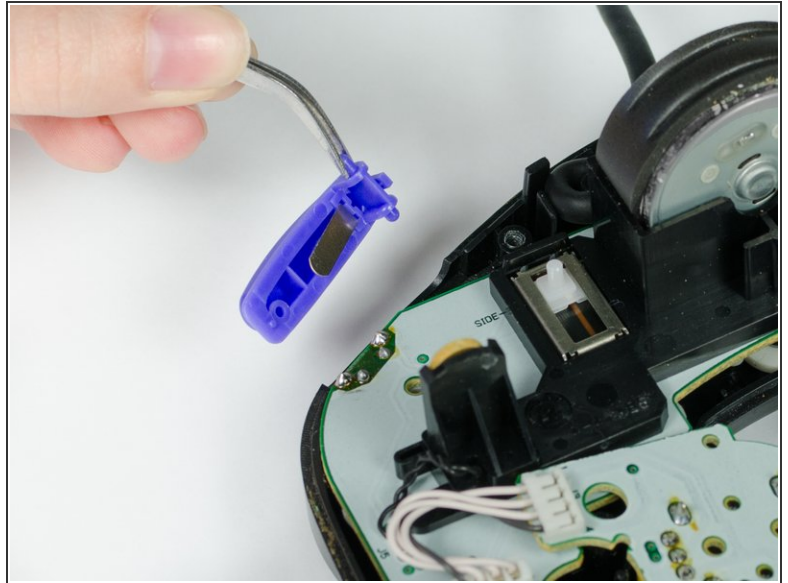
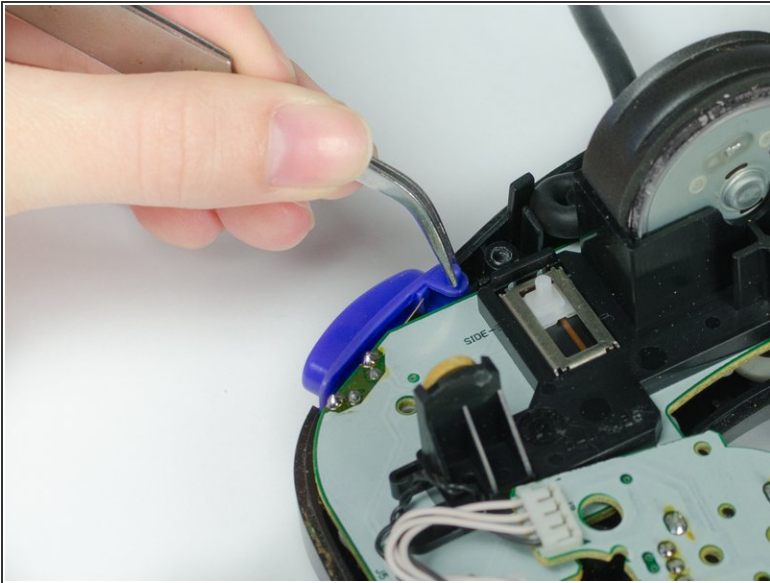
- Place the controller (buttons down) on a solid surface.
- Remove the six 9.2mm Tri-wing Y0 screws that hold the back panel in place.

Step 2



- Gently lift the back panel up, separating it from the front panel.
- ⓘ Some of the buttons may fall out if they are knocked around.

Step 3 — Z Button



- Grab the Z-button by the peg with tweezers and lift it out of the controller.
- ☒ During re-assembly, make sure the plastic rim and spring fit into the slot provided, or else the case will not shut.

To reassemble your device, follow these instructions in reverse order.