



Microsoft Surface Rear Cover Replacement

This guide instructs users on how to remove the back cover of a Microsoft Surface to gain access to the internal components.

Written By: Erin Beane



INTRODUCTION

Step by step instruction to remove the back cover on the Microsoft Surface tablet. In order to complete this task you will need a Soft flat headed prying tool to remove panels, T5 Torx Screwdriver, and the Microsoft Surface device itself. If you do not have these tools, you may purchase them by choosing the links from down below. It is important to wear safety glasses when performing this task to prevent any harm. This process can be performed by anybody in a clear working area with appropriate lighting. The process for removing the back cover involves the removal of several small screws and panel covers around the camera.



TOOLS:

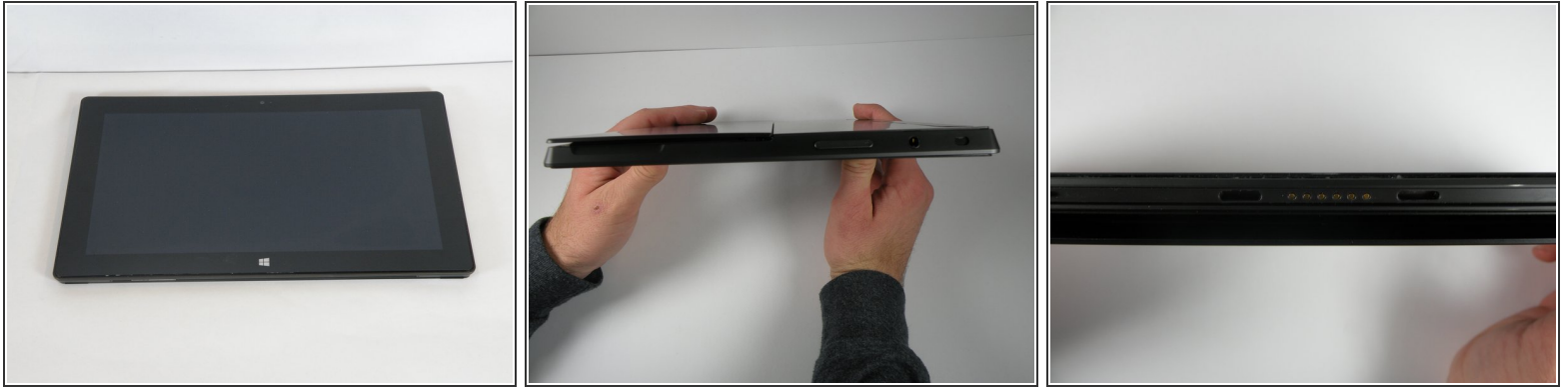
- [Spudger](#) (1)
- [T5 Torx Screwdriver](#) (1)



PARTS:

- [Surface RT \(1st Gen\) Rear Panel](#) (1)
- [Microsoft Surface RT \(1st Gen\) Upper Bezel](#) (1)

Step 1 — Back Cover



☞ Prior to any repairs make sure that the device is orientated correctly, and you are familiar with all ports and buttons. The screen should be facing up with the Windows logo located on the bottom.

⚠ Turn off device prior to continuing

Step 2



- Carefully turn the tablet over so the screen is facing down.
- Pull up on the bottom corners to open the stand.
- Refer to the images.

Step 3



- Locate the two 5.08mm T5 Torx screws. The two screws will be located on the left and right sides in the kickstand.
- Make sure when removing the screws to be careful to prevent stripping of the head.
- With all the screws removed gently wiggle the stand side to side until the lever in the middle is free, releasing the stand.

Step 4



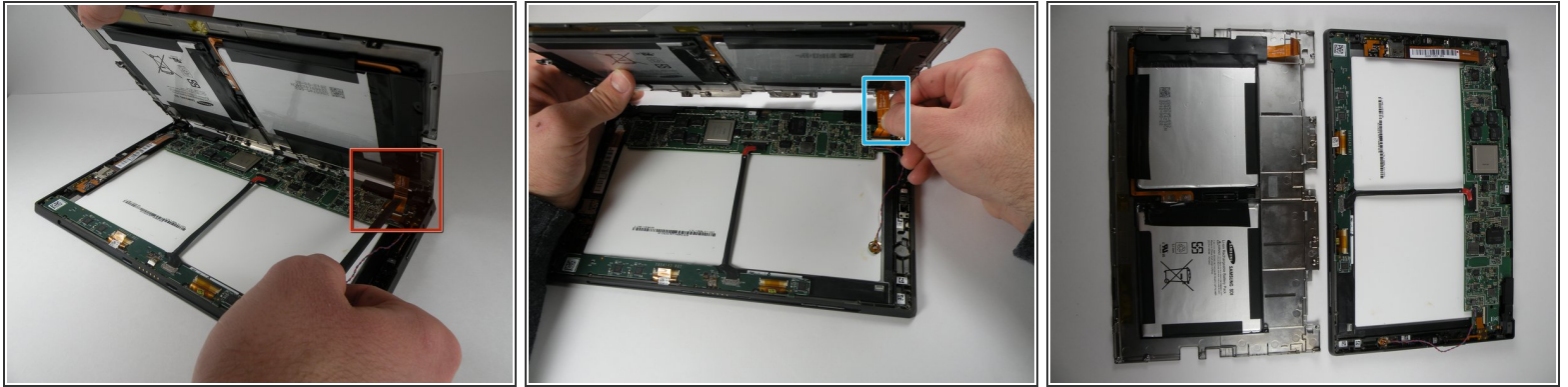
- Use a spudger or similar flat headed tool to release the small bezels out lined in the image. Remove the plastic trim covering the camera with the soft flat headed tool.
- ⓘ Be patient; you will have to work around the casing because there are several small bezels along the edges.

Step 5



- Next, remove the ten 5.92mm T5 torx screws located underneath the kickstand.
 - Remove the seven 5.87mm T5 torx screws located under the camera casing. There is a sticker covering the second screw from the left.
 - Disconnect the rear cover from the main shell of the system by loosening it with a spudger where the gaps exist.
- ⚠** There is an electrical ribbon connecting the rear cover to the motherboard. Do not pull apart the rear cover from the motherboard once you have loosened the rear cover from the main system.
- Continue working your way around to each corner and loosen the snap-ons on each side until the rear cover comes off.

Step 6



- Rotate the device 180 degrees so that the bottom of the device is facing you.
 - A ribbon connects the battery on the rear cover, to the motherboard. Slowly lift the bottom of the rear cover up until you can see the ribbon.
 - Use a spudger to push the ribbon away from the motherboard and parallel to the motherboard in order to remove the ribbon.
 - Separate the rear cover by lifting it up away from the main system.
- i** When reassembling the rear cover to the motherboard, reinserting the ribbon cable with a spudger may prove difficult. In this case, gently use your hands to slide the cable end into the slot until they click into place.

To reassemble your device, follow the instructions in reverse order. Make sure to not over tighten screws to prevent stripping. Also, make sure that all panels are firmly seated back in place.

This document was last generated on 2019-07-11 11:59:24 AM.