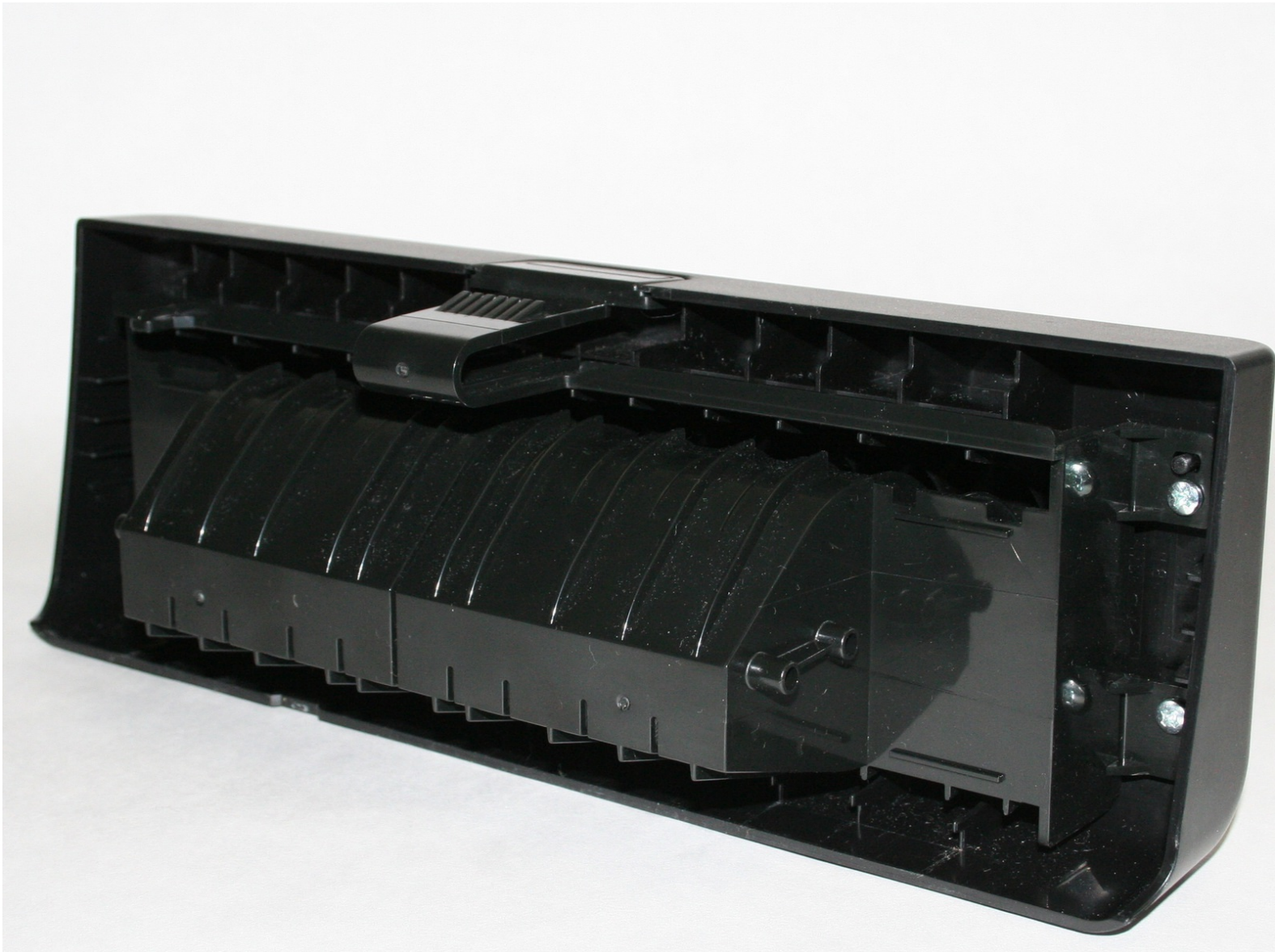




# Lexmark Intuition S505 Duplex Unit Replacement

This guide will inform readers how to install the duplex unit of the printer.

Written By: Raymond



## **INTRODUCTION**

The duplex unit allows the printer to print on the front and back of a page without having to manually flip over the paper.

## Step 1 — Duplex Unit



- Hold the button down with flat end away from the printer. When you hear a click, the duplex unit can be removed from the printer.

## Step 2



- Remove the duplex unit from the back of the printer with the duplex unit is facing up.

Once the duplex unit is installed, your printer will be able to print on the front and back of pages.

