



# IKEA KOPPLA Connector (fix)

Correct issue with intermittant USB charge functionality

Written By: Carsten Dahl Hjarup



---

## INTRODUCTION

Show you how to fix a charger that have become not working , or does not always work.

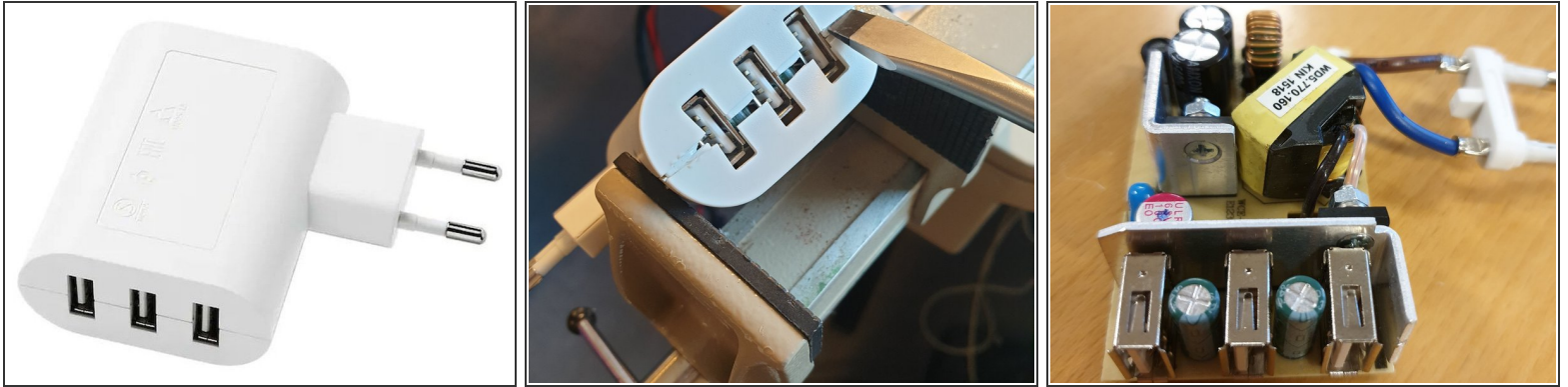
One to Three ports can be defective.

---

### TOOLS:

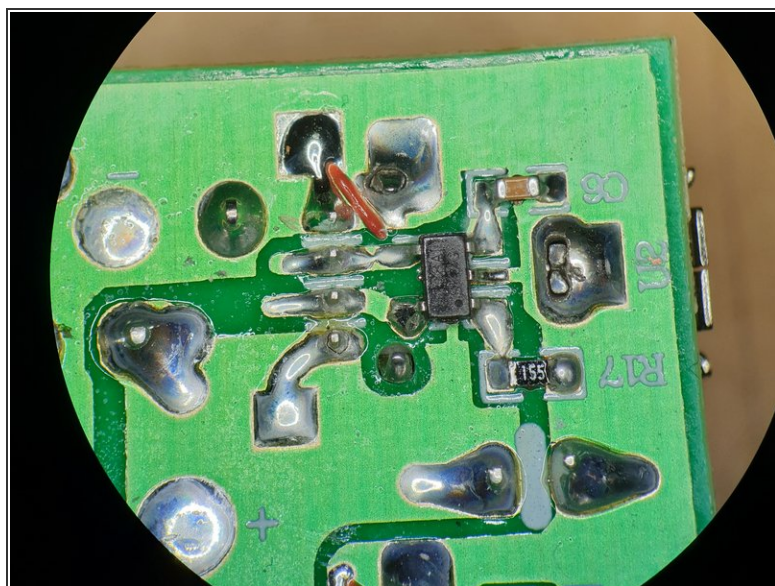
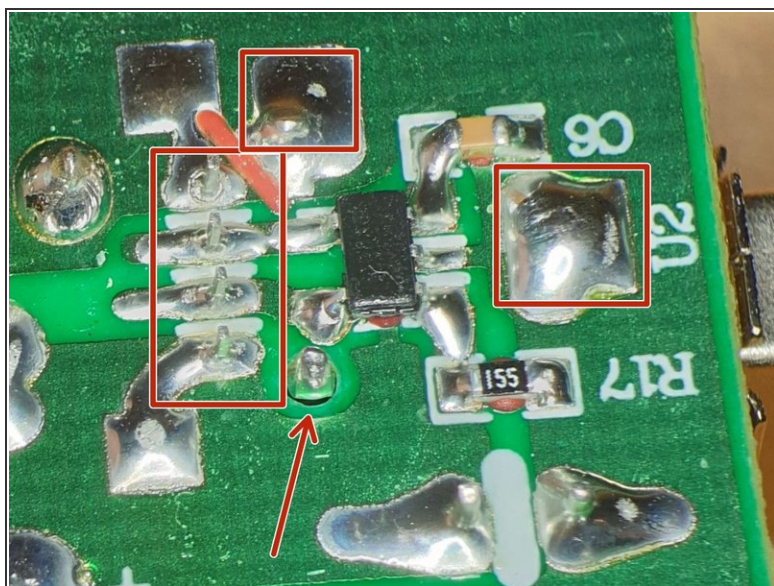
- [Soldering Iron](#) (1)
  - [Screw drivers flathead](#) (1)
  - [vice heavy duty](#) (1)
-

## Step 1 — break open the adapter



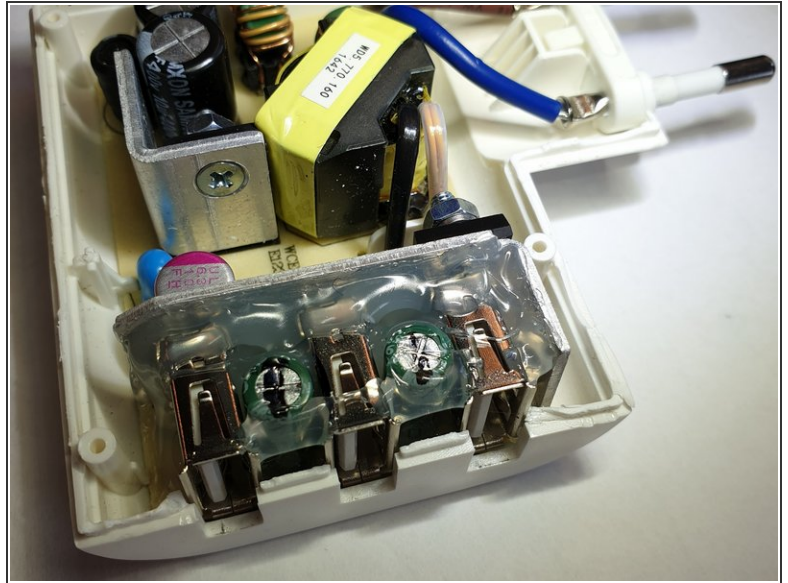
- open device , using brute force is the only option because it's ultrasonic welded together.
- use screw driver or squeeze in a vice to crack it open."

## Step 2 — Fixing the issue (broken solderpoints)



- Resolder all the USB connector pins (red box'es), on all 3 USB connectors to be sure they are functional. (on this image the top one is defective)
- The reason solder points break is the connector support is soldered onto the board on one side only. Not by the arrow. Thereby adding stress directly to the soldered pins.
- In addition the connector pin (square) near the U2 marking is too short and therefore may not be soldered properly.
- see 2nd image for example of front support pin is pulled out of solder area.

### Step 3 — add glue to connectors



- add hot melt glue in these areas on the board and on the side of the connector.
- Add the cover first to understand where there is room for it in the cover.
- If connector is not glued, it is likely the charger will stop working again in the near future.
- Ikea have been notified of this issue.

### Step 4



- To seal the enclosure , add suitable glue to edge, and press the top/bottom together.
- Use as vice while holding them together, while the glue hardens.

I understand these adapters are cheap, but they can be repaired as described.