



# Samsung Galaxy S III Motherboard Assembly Replacement

Prereq only.

Written By: Walter Galan



---

## INTRODUCTION

Prereq only.

---

### TOOLS:

- [Phillips #00 Screwdriver](#) (1)
  - [iFixit Opening Tools](#) (1)
-

## Step 1 — Motherboard Assembly



- Use a plastic opening tool to pry the front-facing camera connector from its socket on the motherboard.

⚠ Do not try to remove the front-facing camera just yet. Its cable is still routed beneath the motherboard assembly to the ambient light sensor.

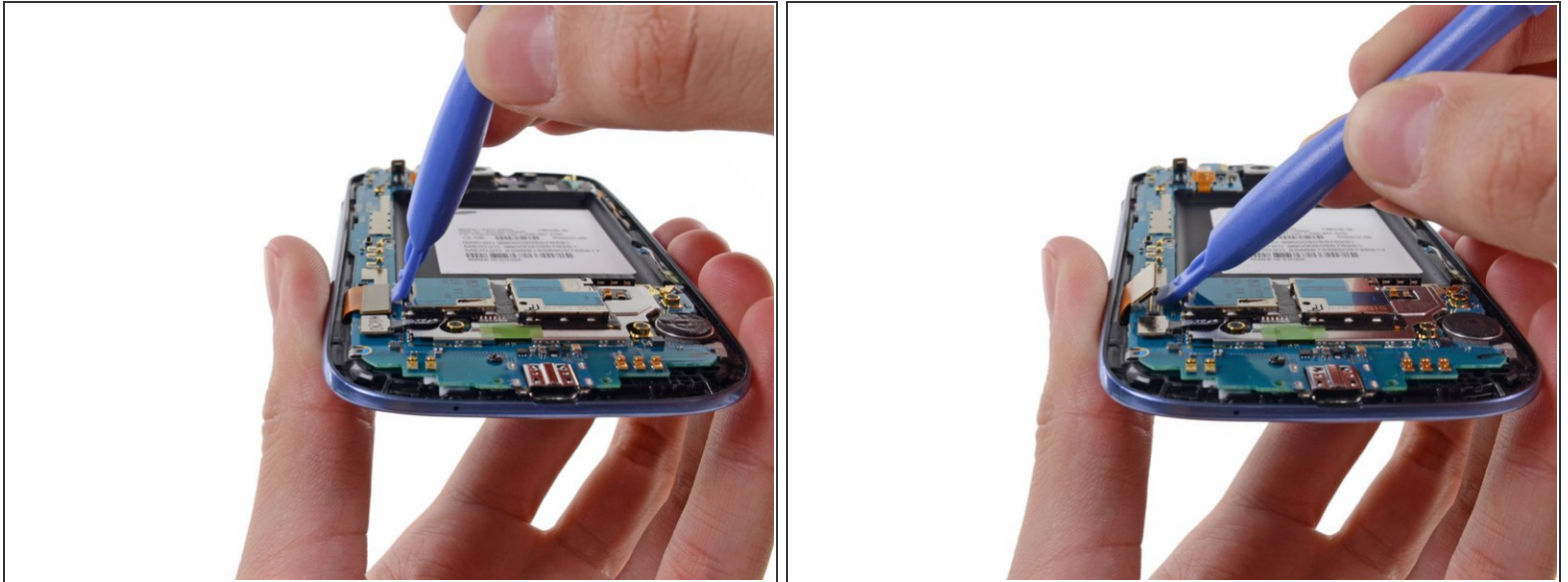
## Step 2



- Disconnect the digitizer cable by gently prying its connector up from its socket on the motherboard.

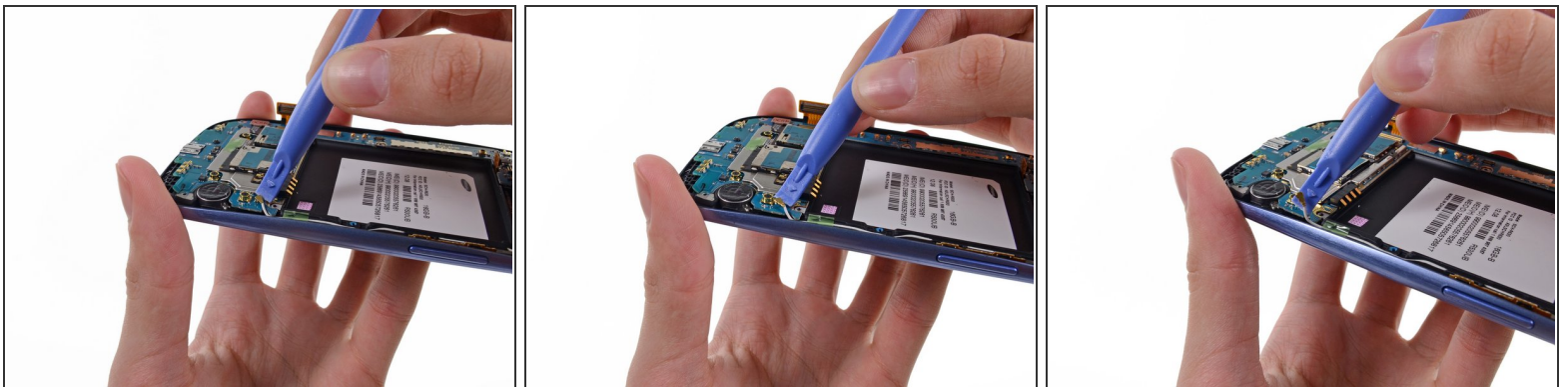


### Step 3



- Disconnect the display data cable from the motherboard.

### Step 4



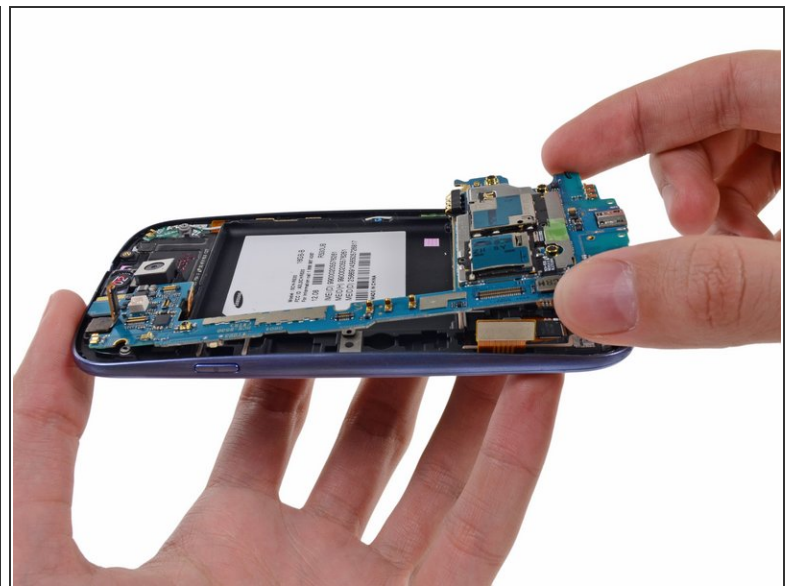
- Pry the Wi-Fi antenna cable connector up from its socket on the motherboard.
- Gently move the cable out of the way of the motherboard.

## Step 5



- Remove the single 3.0 mm Phillips screw securing the motherboard to the front panel assembly.

## Step 6



- Carefully lift the bottom of the motherboard assembly away from the front panel assembly.
- Remove the motherboard assembly from the front panel assembly, minding any cables that may snag on it.

To reassemble your device, follow these instructions in reverse order.

This document was last generated on 2019-08-14 10:34:31 AM.