



# Canon Pixma MP480 Scanner Cover Replacement

If the scanner cover has marks, your scans will not turn out well.

Written By: Khutug Dorjsuren



## INTRODUCTION

This guide will show how to install a new scanner cover.

---



### PARTS:

- [Canon Pixma MP480 Scanner Cover](#) (1)
-

## Step 1 — Scanner Cover



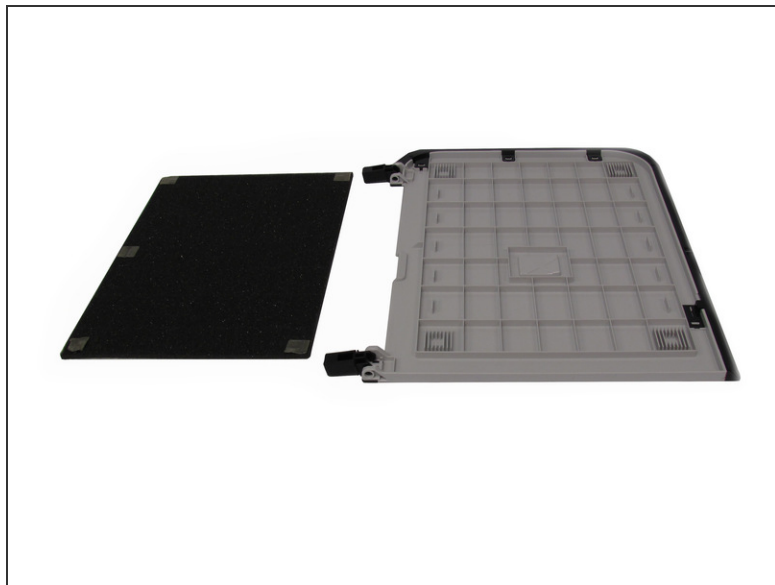
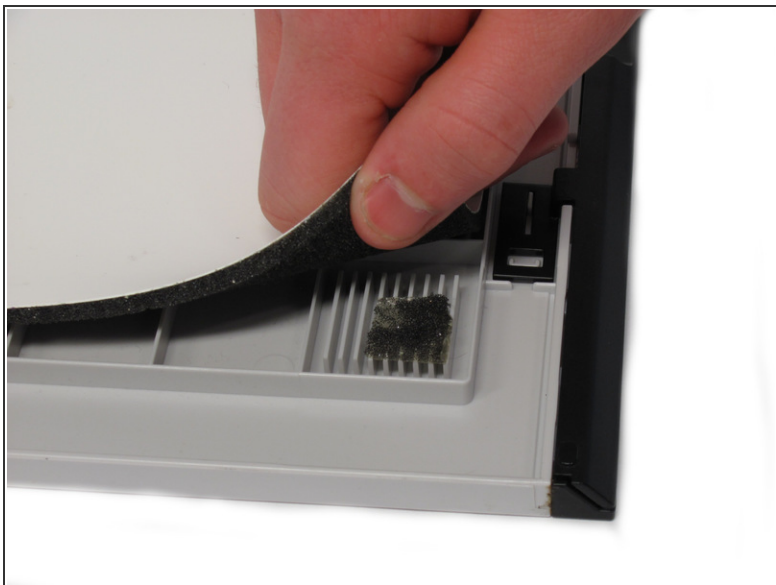
- Open the scanner cover, as if you are going to scan a document.

## Step 2



- Pull the scanner cover straight up and it will come off.
- ⓘ A quick and firm pull works best.

### Step 3



- Completely remove the scanner cover by peeling the thin white plastic sheet off.

To reassemble your device, follow these instructions in reverse order.

This document was last generated on 2017-06-17 07:31:41 AM.