



Samsung Notebook 7 Spin NP740U3MK01US

Battery Replacement

How to replace the battery in a Samsung Notebook 7 Spin NP740U3M-K01US.

Written By: Alexander Ulman



INTRODUCTION

If your laptop only powers on when the power adapter is plugged in, you may have a faulty battery and it needs to be replaced. Signs of a faulty battery can include: device isn't charging, device won't hold a charge, device won't turn on, etc.

This is a battery replacement guide for the Samsung Notebook 7 Spin NP740U3MK01US. Before beginning, make sure to power off your device and disconnect it from any external power source.

TOOLS:

- [Phillips #00 Screwdriver](#) (1)
 - [iFixit Opening Tools](#) (1)
 - [Spudger](#) (1)
-

Step 1 — Battery



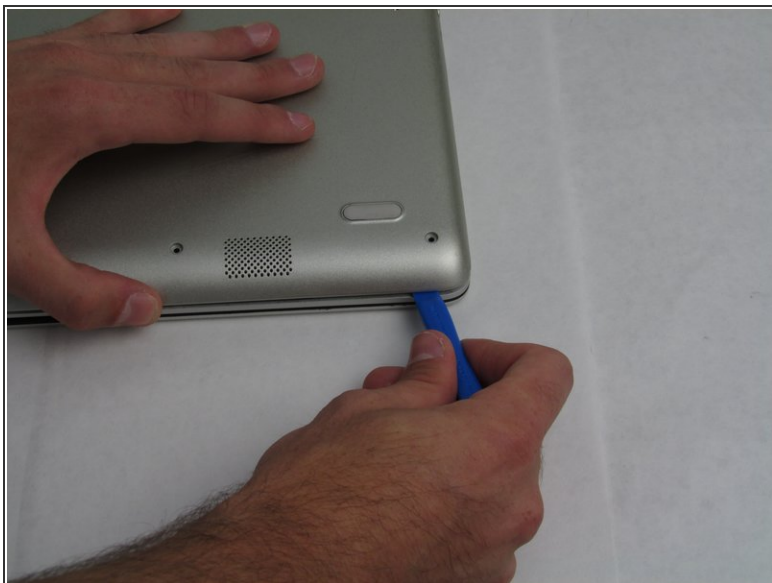
- Flip your laptop over so that the back is face up.

Step 2



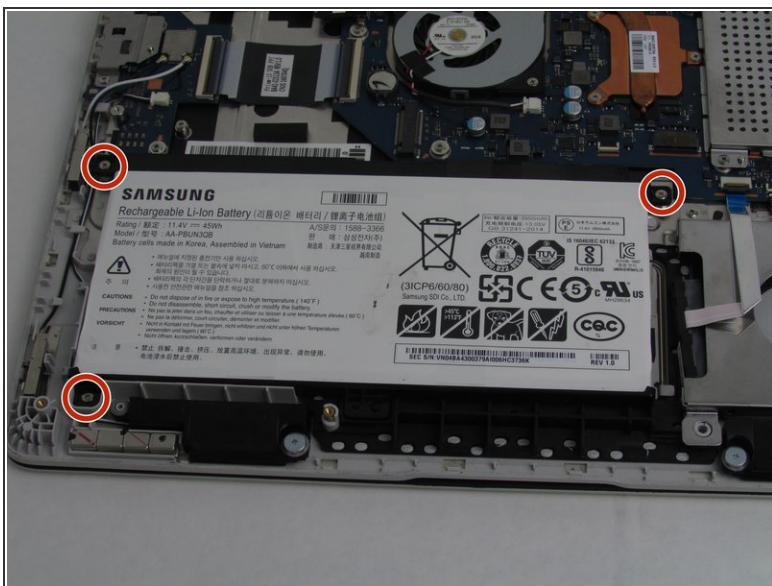
- Use a Phillips #00 screwdriver to remove the four 6.5mm screws and the six 4.5mm screws that secure the back plate.

Step 3



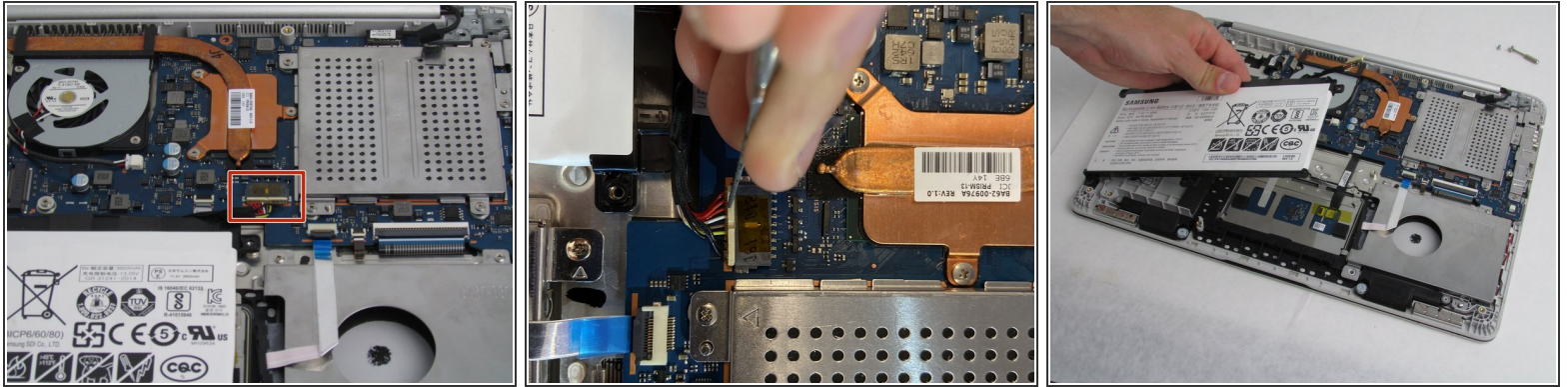
- Use a plastic opening tool to remove the back plate from the laptop.
- ⓘ It is recommended that you start from a corner then run the tool along the edge of the back plate.

Step 4



- Use a Phillips #00 screwdriver to remove the three 4.5 mm screws holding the battery in place.

Step 5



- Use a spudger to pry the battery connecting cable from the laptop and remove the battery.

⚠ Using the metal spudger may severely damage the internal components in your device.

To reassemble your device, follow these instructions in reverse order.