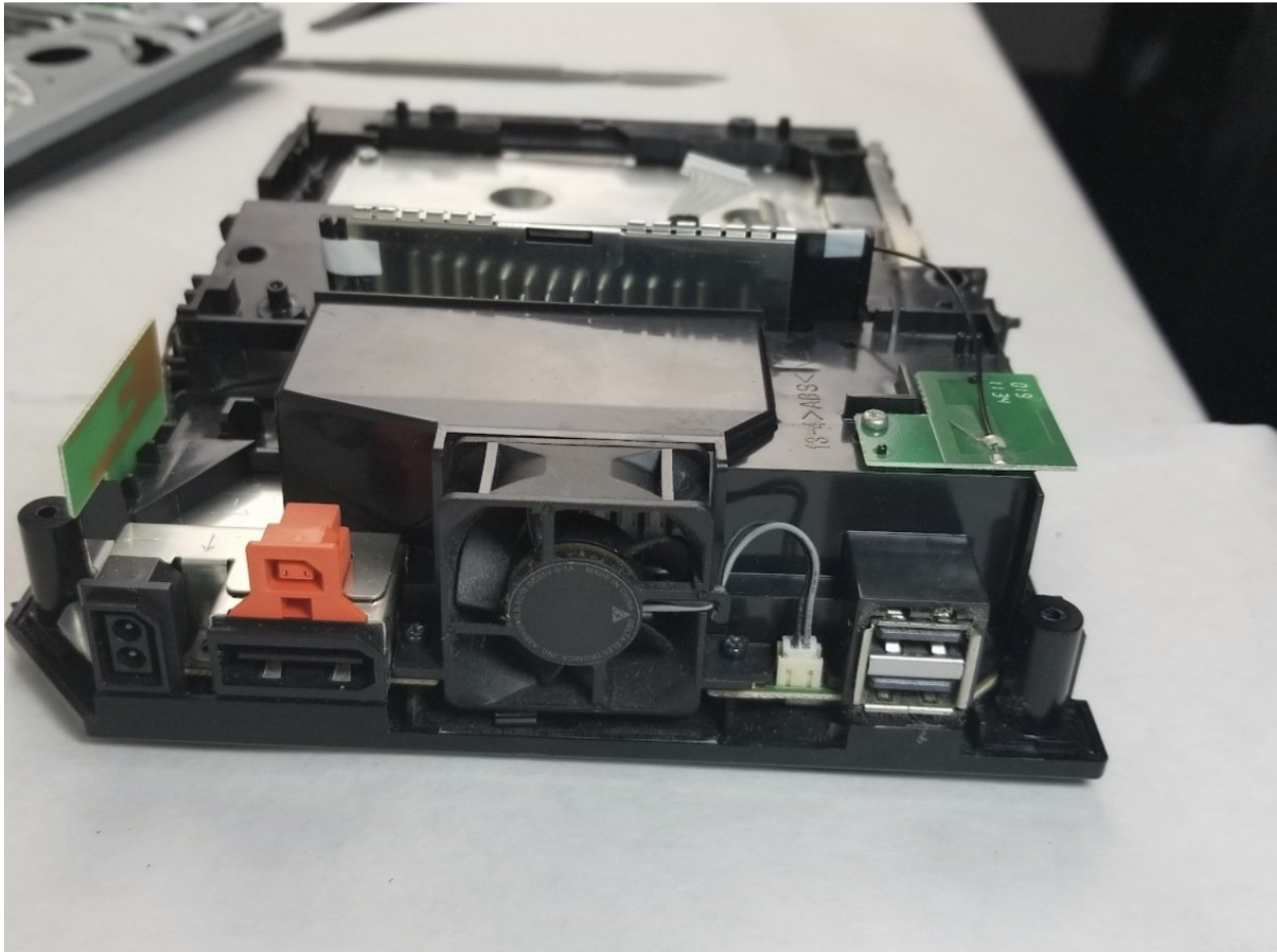




Nintendo Wii 2011 Bluetooth and WiFi Boards Replacement

Use this guide to replace the bluetooth and Wi-fi boards in your 2011 Nintendo Wii.

Written By: Chris Halprin



 **TOOLS:**

- [Phillips #0 Screwdriver](#) (1)
- [Y1 Tri-point Screwdriver](#) (1)
- [Tweezers](#) (1)

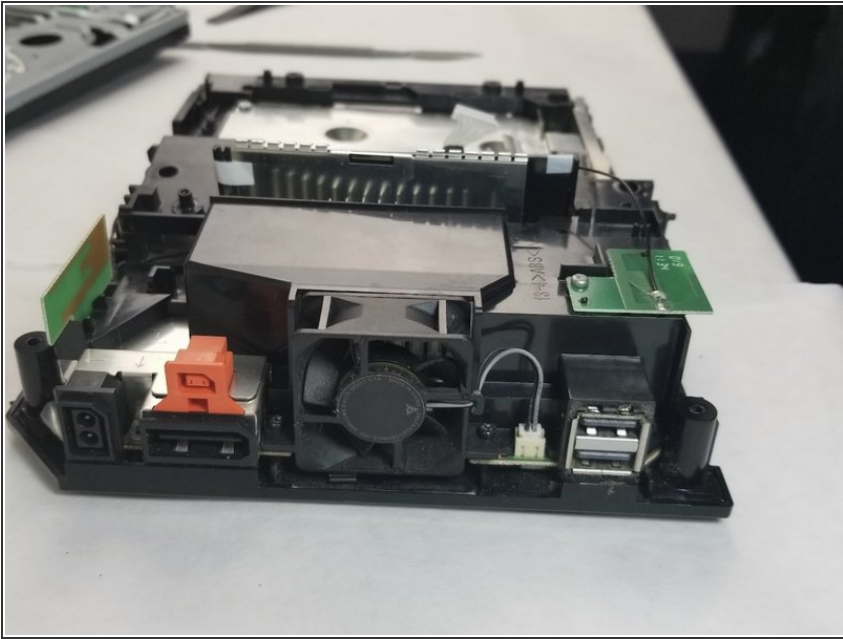
Angle-head Needle Nose

- [Metal Spudger](#) (1)
- [1/4" hex bit](#) (1)
- [Soldering Workstation](#) (1)

 **PARTS:**

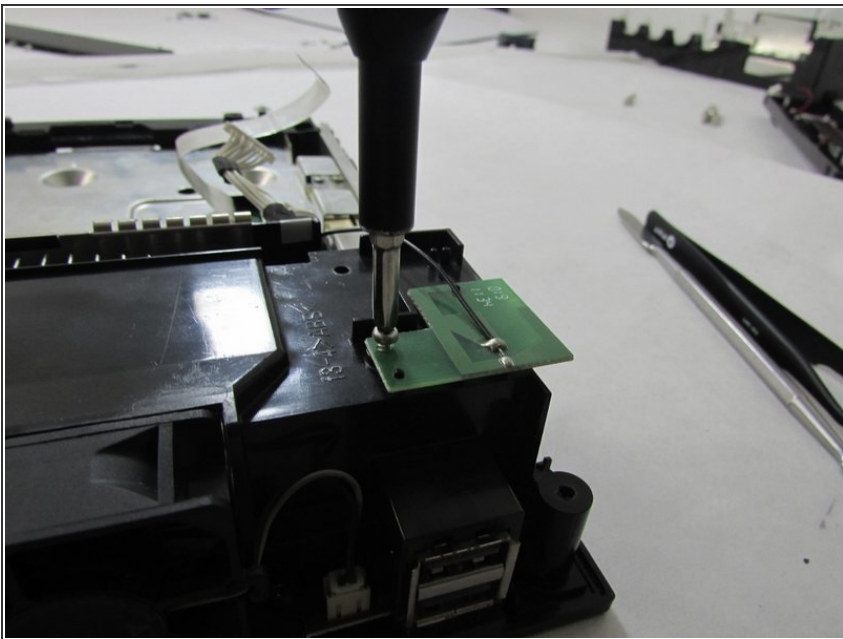
- [Nintendo Wii Wi-Fi Board](#) (1)
- [Nintendo Wii Bluetooth Board](#) (1)

Step 1 — Bluetooth and WiFi Boards



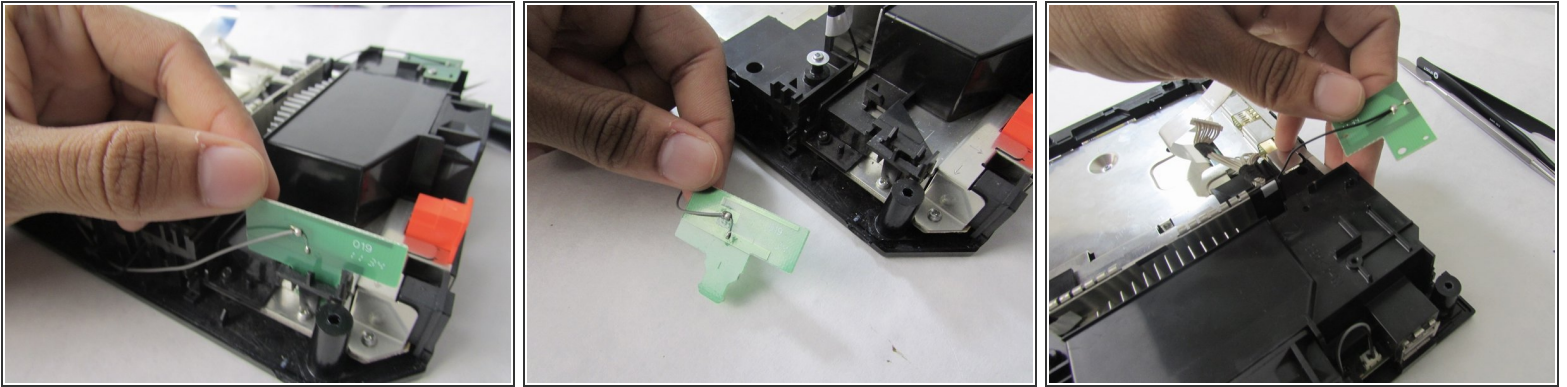
- Follow the [Nintendo Wii 2011 Outer Case Removal Guide](#) to step 18

Step 2



- Unscrew the 3mm screws holding the Bluetooth and WiFi boards in place.

Step 3



- Remove the boards. To do this gently pull away from the device.

Step 4



- Take the solder off connecting the Bluetooth and Wifi boards. This could be the reason they are not working. The solder may have failed. After this resolder the boards and complete these steps in reverse order.

To reassemble your device, follow these instructions in reverse order.