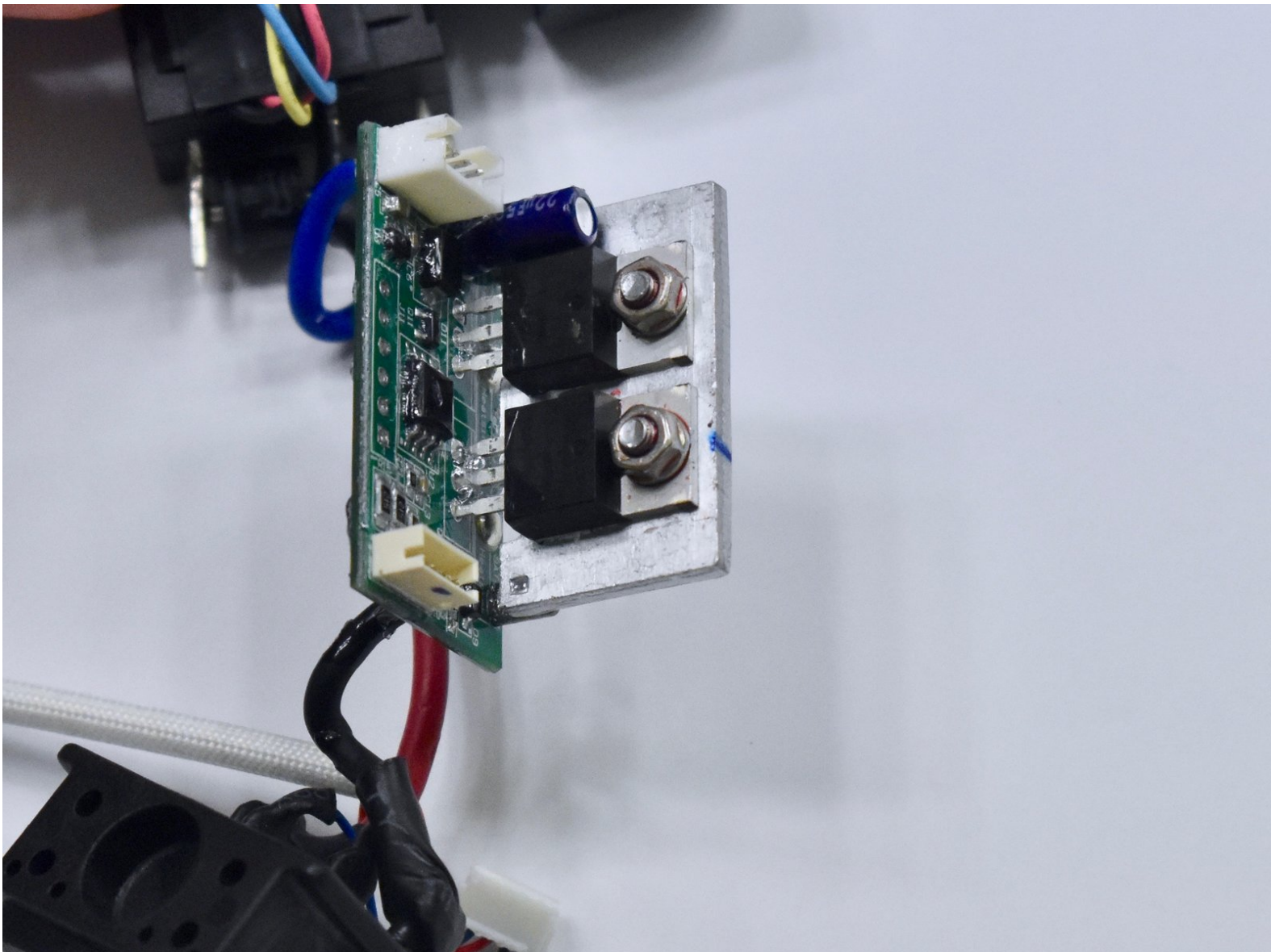




# Milwaukee M18 2606-20 Circuit Board Replacement

How to remove the circuit board / electrical assembly for the Milwaukee M18 2606-20 cordless power drill.

Written By: Markus Eldridge



## INTRODUCTION

If you need to replace the circuit board on your Milwaukee M18 2606-20 cordless power drill (replaced the battery but still no power) see this guide on how to remove it. The circuit board is the brain of the drill and controls most components in the drill. Some reasons the circuit board may need replacement are the white light is not turning on or the drill is turning on and the battery has been replaced. See our [How to Solder and Desolder Connections Guide](#) for help with the final steps of the guide.

---

### TOOLS:

- [T3 Torx Screwdriver](#) (1)
  - [Soldering Iron](#) (1)
  - [Solder](#) (1)
  - [iFixit Opening Tools](#) (1)
  - [ESD Safe Tweezers Blunt Nose](#) (1)
-

## Step 1 — Circuit Board



- Remove the seven 18 mm screws, using the T3 Torx Screwdriver, from the handle area of the case.
- Remove the two 21 mm screws, using the T3 Torx Screwdriver, from the top of the case.

## Step 2



- Remove the four 20 mm screws, using the T3 Torx Screwdriver, from the front of the case.

### Step 3



- Peel back the sticker at the bottom of the drill handle.

### Step 4



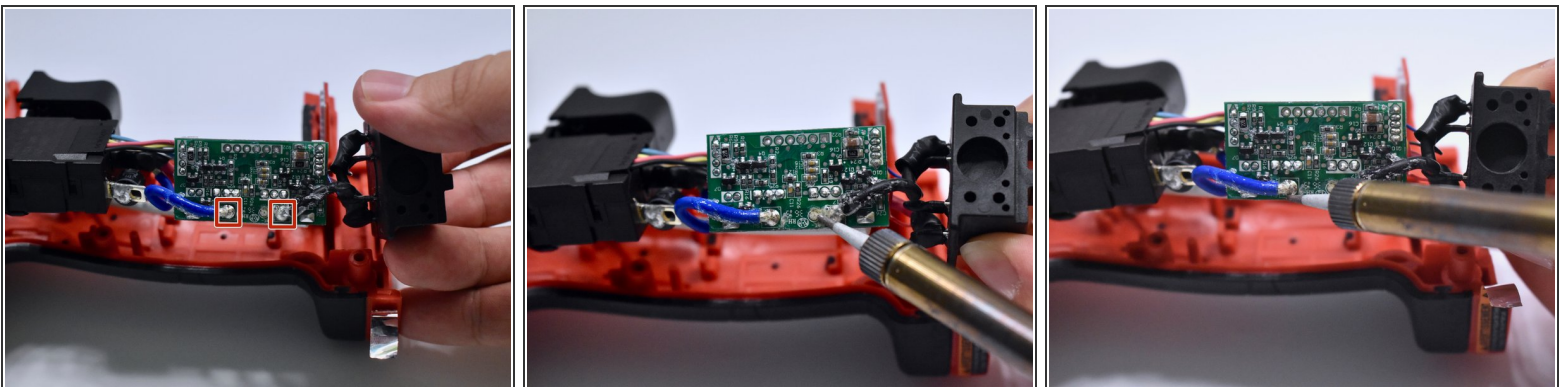
- Open the case by sliding the opening tool all the way around the case to pry it apart.

## Step 5



- Remove the 4-pin and 5-pin connector, using the tweezers, from the circuit board.

## Step 6



- Desolder all of the wires connected to the circuit board.
- ⓘ When you take the circuitboard out of the case, watch for a spring that is in the back of the battery contacts as it can fly out.

To reassemble your device, follow these instructions in reverse order.