



# Samsung SC MX-20 Lens Replacement

This guide will demonstrate how to replace the camera lens in your Samsung SC MX-20.

Written By: Austin Williams



---

## INTRODUCTION

The lens of a camcorder is one of the most important components of the device. However, the lens is also susceptible to cracking and becoming dirty. A dirty/cracked lens may affect the outcome of the photographed results, so a replacement may be in order.

When the lens of a Samsung camcorder are damaged or non-functional, it would need to be replaced. This guide will show you how to remove the lens in your camcorder.

---

### TOOLS:

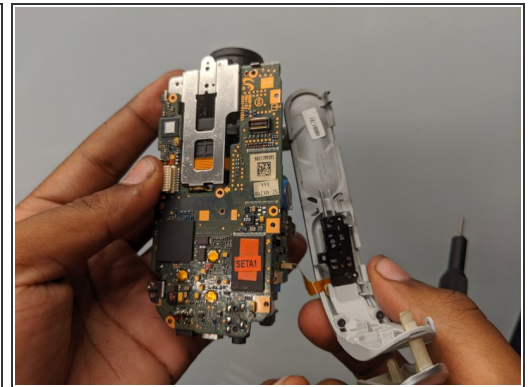
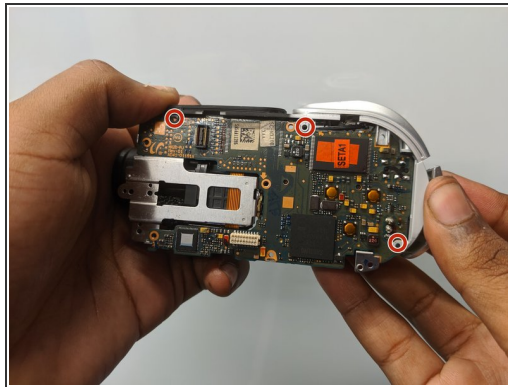
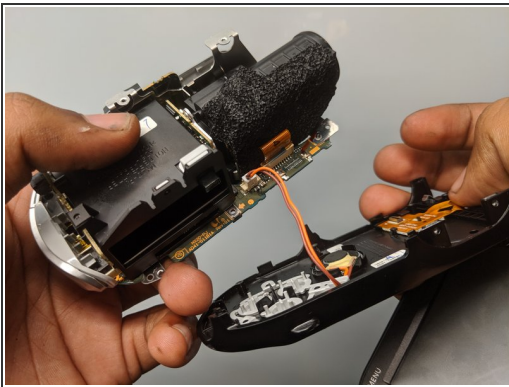
- [Phillips #000 Screwdriver](#) (1)
  - [iFixit Opening Tools](#) (1)
-

## Step 1 — Lens



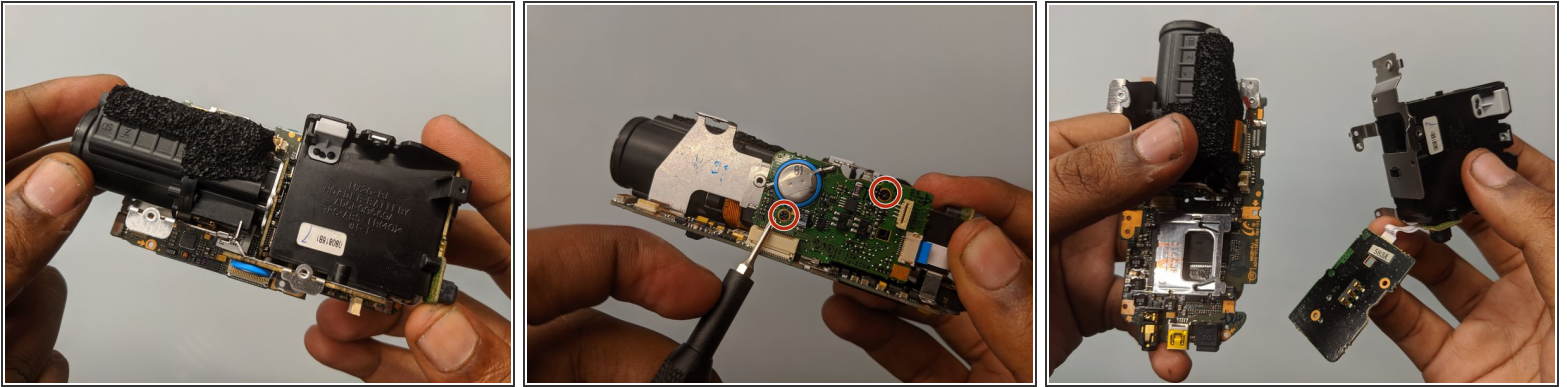
- Unscrew the eight 4mm screws using the Phillips #000 screwdriver.

## Step 2



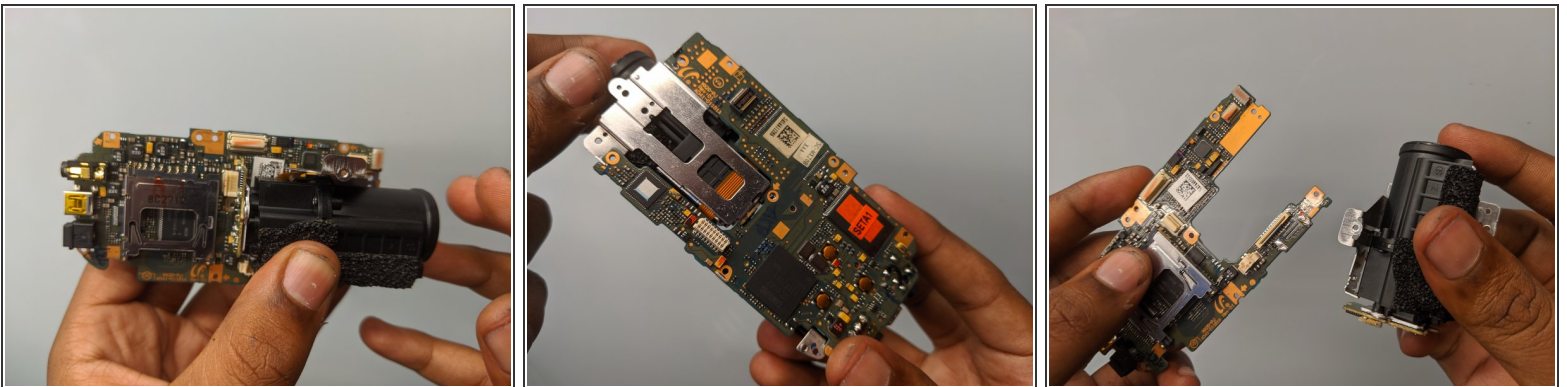
- Unplug the cord connecting the LCD section of the device.
- Remove the left face of the device.
- Remove the top face by removing the three 4mm screws using a Phillips #000 screwdriver.

### Step 3



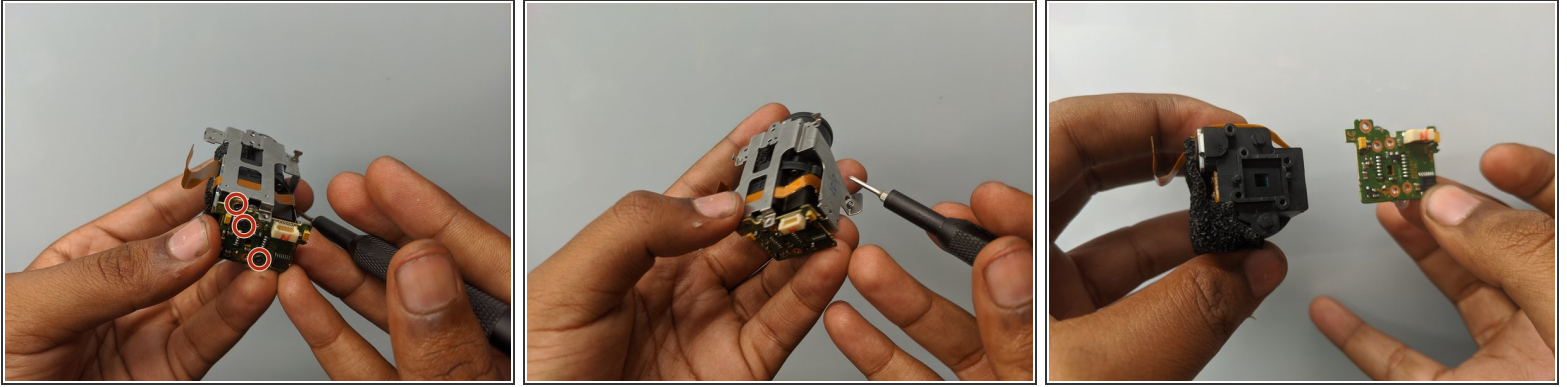
- After removing the body of the device, unscrew the two 3.5mm Phillips #000 screws holding the battery compartment in place.
- Remove the battery compartment.

### Step 4



- Remove the lens assembly from the device.

## Step 5



- Remove the three 3.5mm Phillips #000 screws on the metal part from the lens component.
- Remove the motherboard from the lens.
- Remove the lens from the lens assembly.

To reassemble your device, follow these instructions in reverse order.