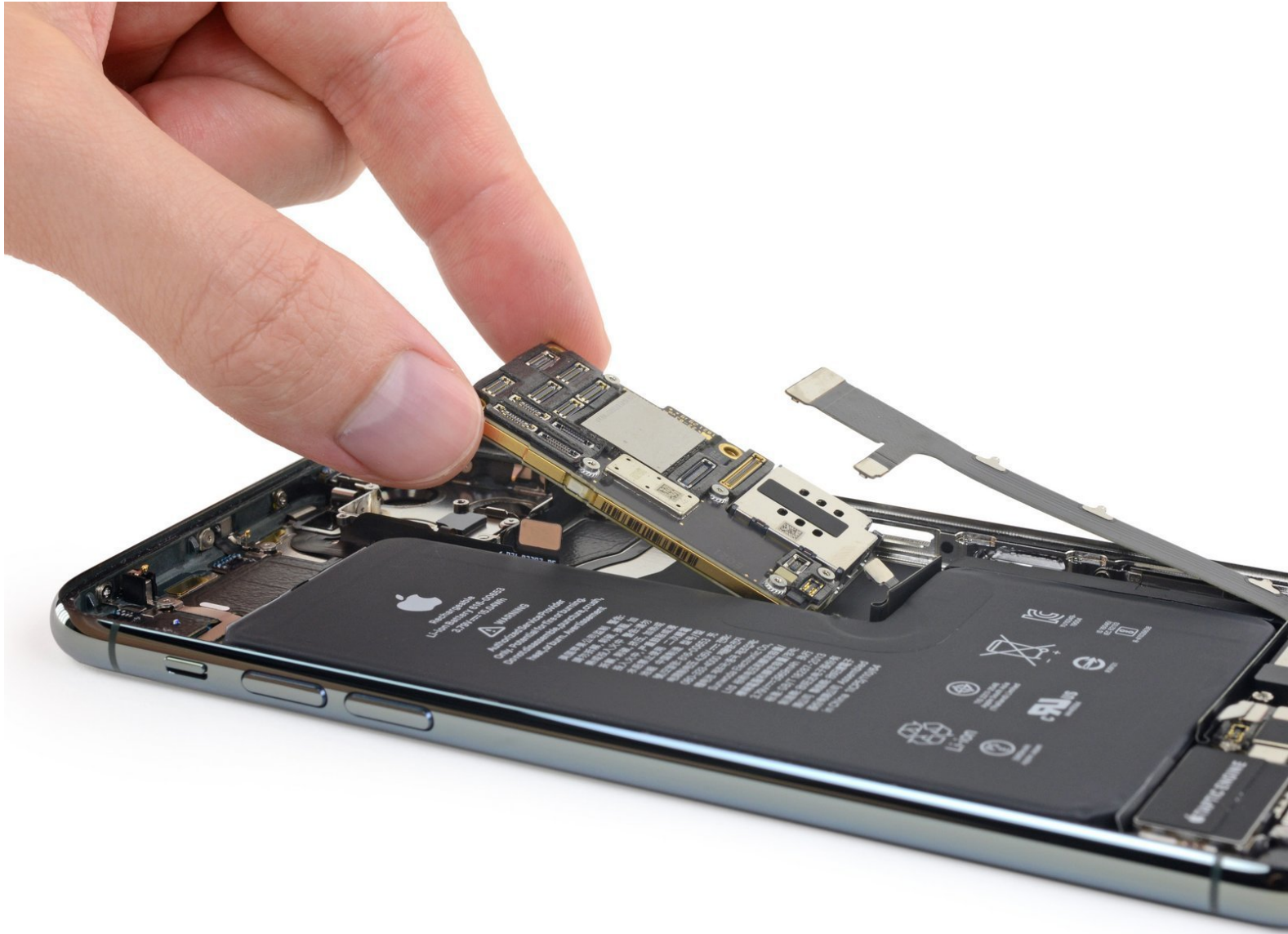




iPhone 11 Pro Logic Board Replacement

Written By: Arty



INTRODUCTION

[video: <https://www.youtube.com/watch?v=eiXQdcjsDiE>]

How to remove and replace the logic board on the iPhone 11 Pro.

Note: Each iPhone's logic board and Face ID + proximity sensor are paired at the factory, so replacing the logic board will disable Face ID *unless* you also install a replacement Face ID module + proximity sensor that has been properly paired to your new logic board.

TOOLS:

- [Suction Handle](#) (1)
 - [Spudger](#) (1)
 - [Tweezers](#) (1)
 - [iFixit Opening Picks set of 6](#) (1)
 - [Phillips #000 Screwdriver](#) (1)
 - [P2 Pentalobe Screwdriver iPhone](#) (1)
 - [iPhone Standoff Screwdriver](#) (1)
 - [Tri-point Y0 Screwdriver](#) (1)
-

To reassemble your device, follow these instructions in reverse order.