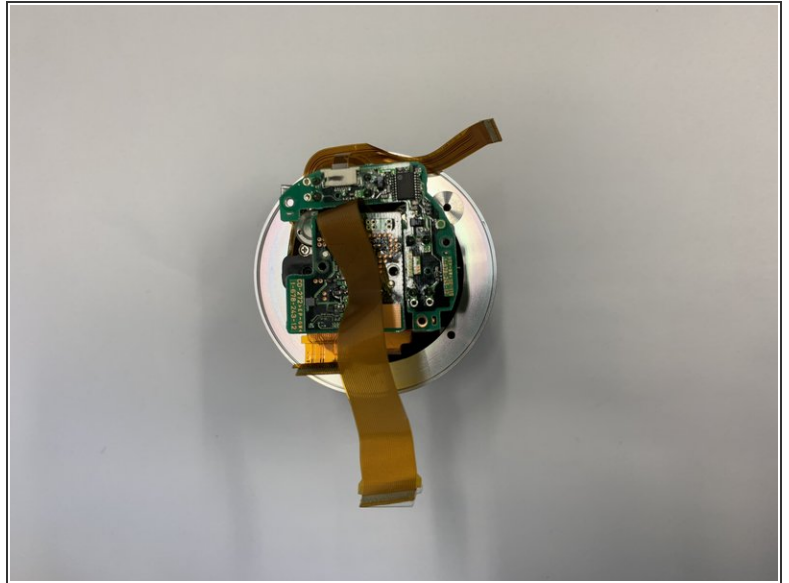


步骤 1 — len



- Remove the shell of base from the shell of lens

步骤 2



- The outer casing of the lens consists of two outer casings that are secured by an end cap that connects them. In this part we take this end cap

步骤 3



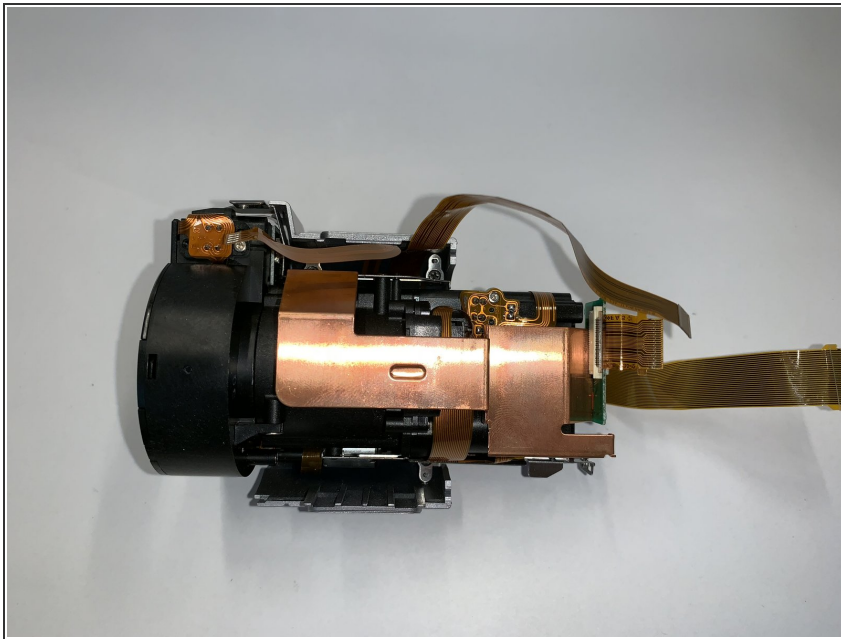
- There is also a front end cover at the front end of the lens. In this step we take it away.

步骤 4



- Place the lens section horizontally on the workbench and pry open the top cover of the lens with some effort

步骤 5



- After removing the shell of lens we can replace the inside part.

当重新组装你的设备时，请按照说明的相反顺序进行操作。