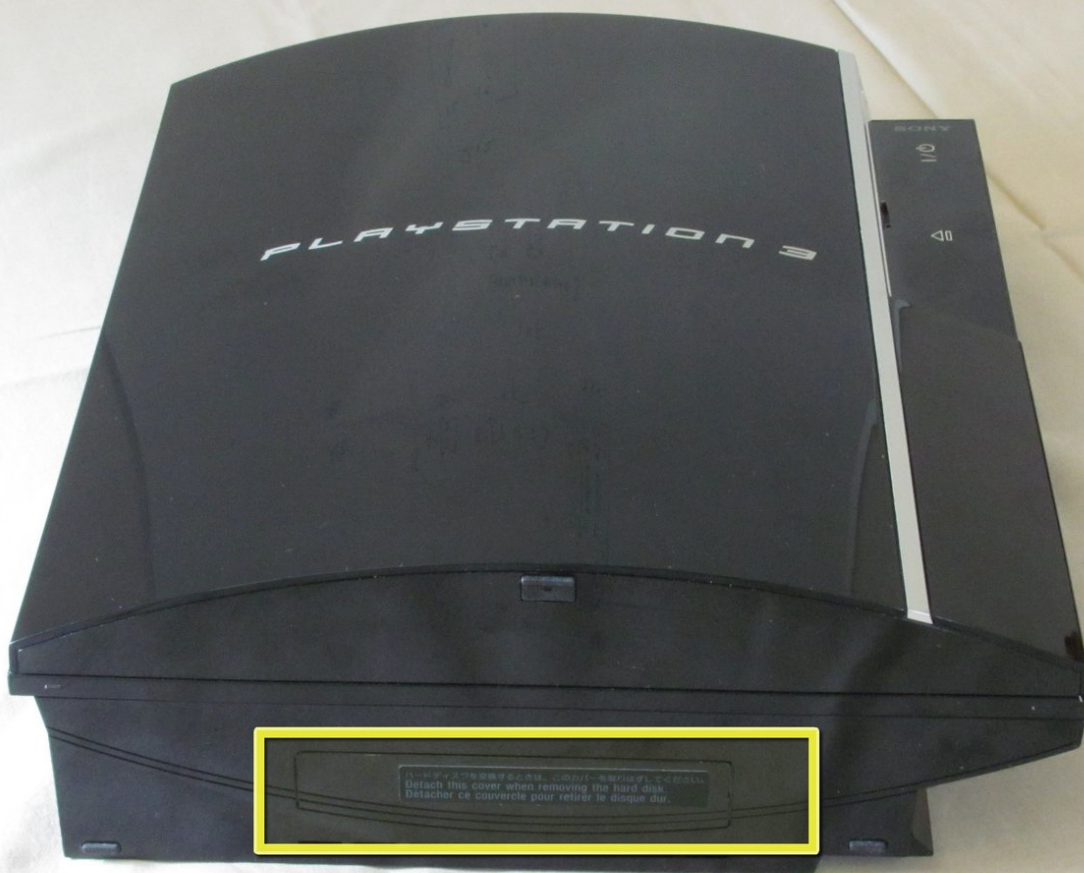




PlayStation 3 Hard Drive Replacement

Written By: iDeleted



INTRODUCTION

How to replace the hard drive in a PS3.

TOOLS:

- [Phillips #1 Screwdriver](#) (1)
 - [Spudger](#) (1)
-

Step 1 — Hard Drive



- Locate the hard drive bay cover on the side of the PS3.

Step 2



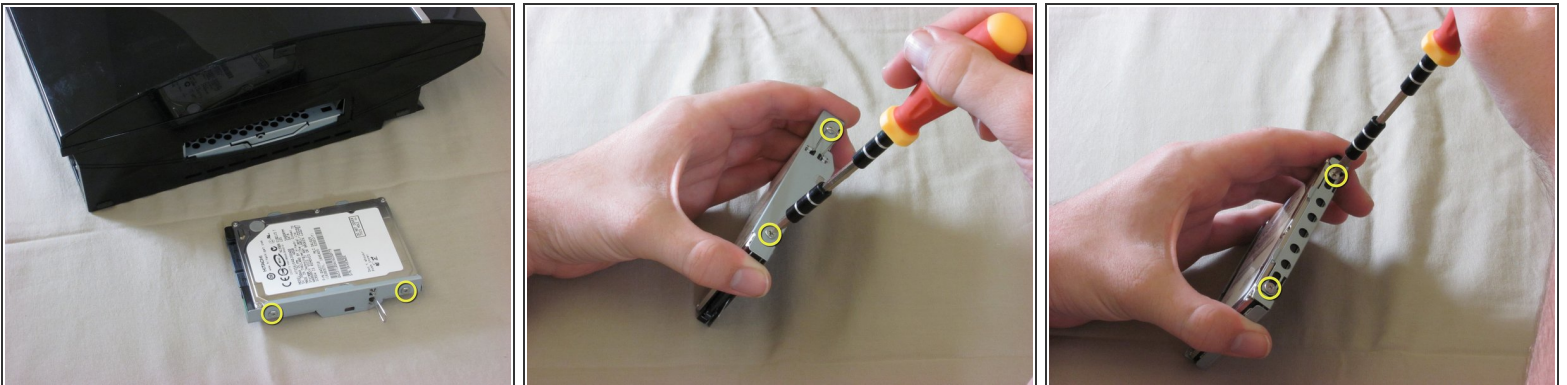
- Remove the cover with a spudger.

Step 3



- Lift the metal tab on the hard drive enclosure.
- Pull the tab to slide the hard drive enclosure to the right.
- Pull the hard drive enclosure out of the PS3.

Step 4



- There are four screws on the side of the hard drive enclosure.
 - ⓘ Two of the screws are shown here. The other two are on the opposite side.
 - ⚠ The screws are very tight. Be careful not to strip them!
- Remove the two screws on one side of the hard drive enclosure with a Phillips #1 screwdriver.
- Flip over the hard drive enclosure and remove the remaining two screws on the other side.

Step 5



- Carefully slide the hard drive out of the metal enclosure.
- ⓘ Note the orientation of the hard drive when sliding it out of the enclosure.

To reassemble your device, follow these instructions in reverse order.