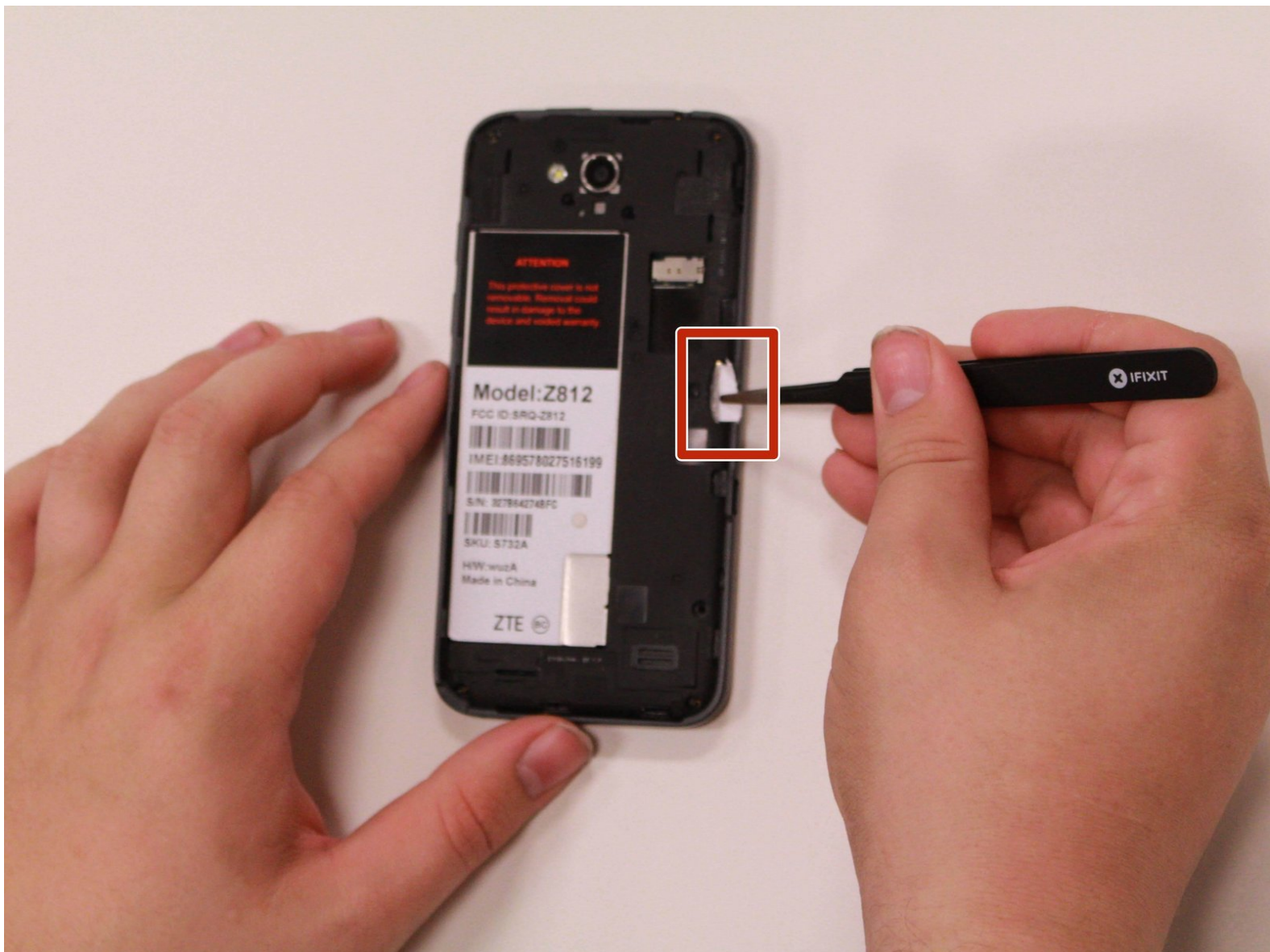




ZTE Maven SIM Card Replacement

This guide will show you how to replace the SIM Card in your ZTE Maven.

Written By: Tristan Schuler



INTRODUCTION

The SIM Card is what enables you make calls through a specific provider, and is a little custom ID for your device. If the ZTE Maven is experiencing issues with the service provider, contact them first before making the replacement as it may be an issue on their end. If not, this guide will instruct you on how to replace the SIM card with a new one.



TOOLS:

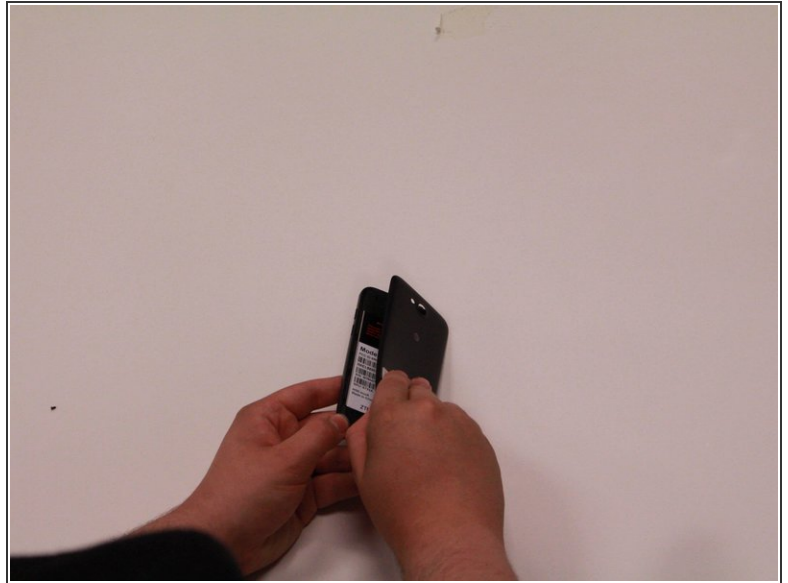
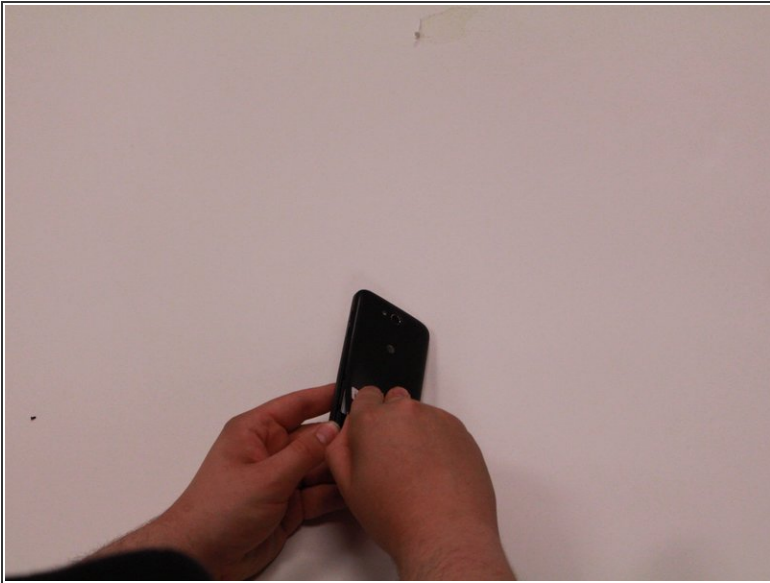
- [Tweezers](#) (1)



PARTS:

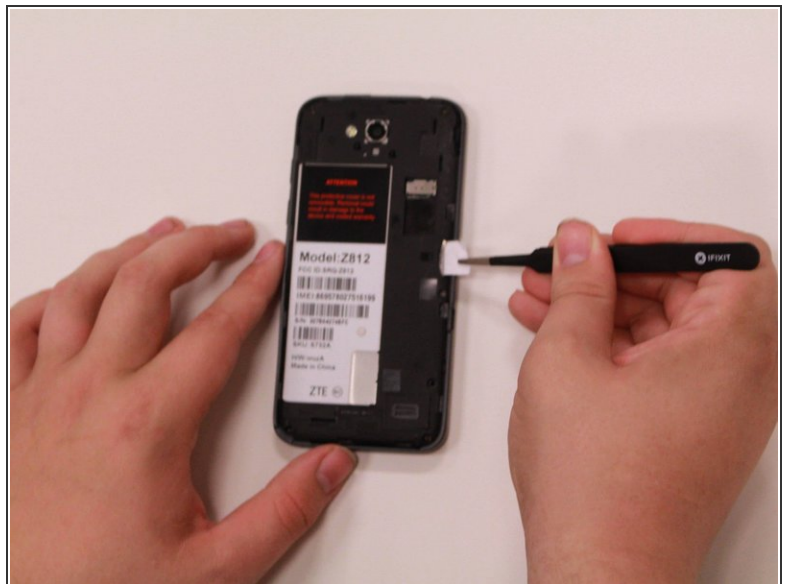
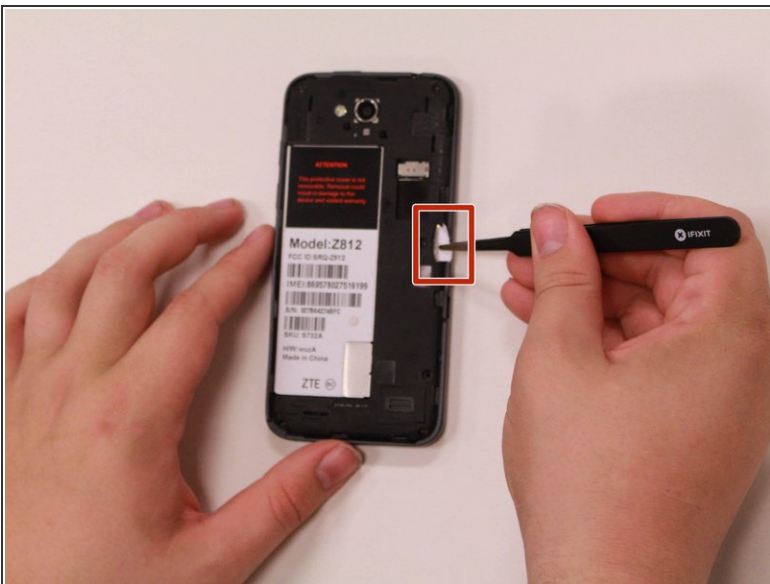
- [Micro Size SIM Card](#) (1)

Step 1 — Back Cover



- Use your fingers to remove the back cover.

Step 2 — SIM Card



- Remove the SIM card from the right side of the device using a pair of tweezers.

To reassemble your device, follow these instructions in reverse order.