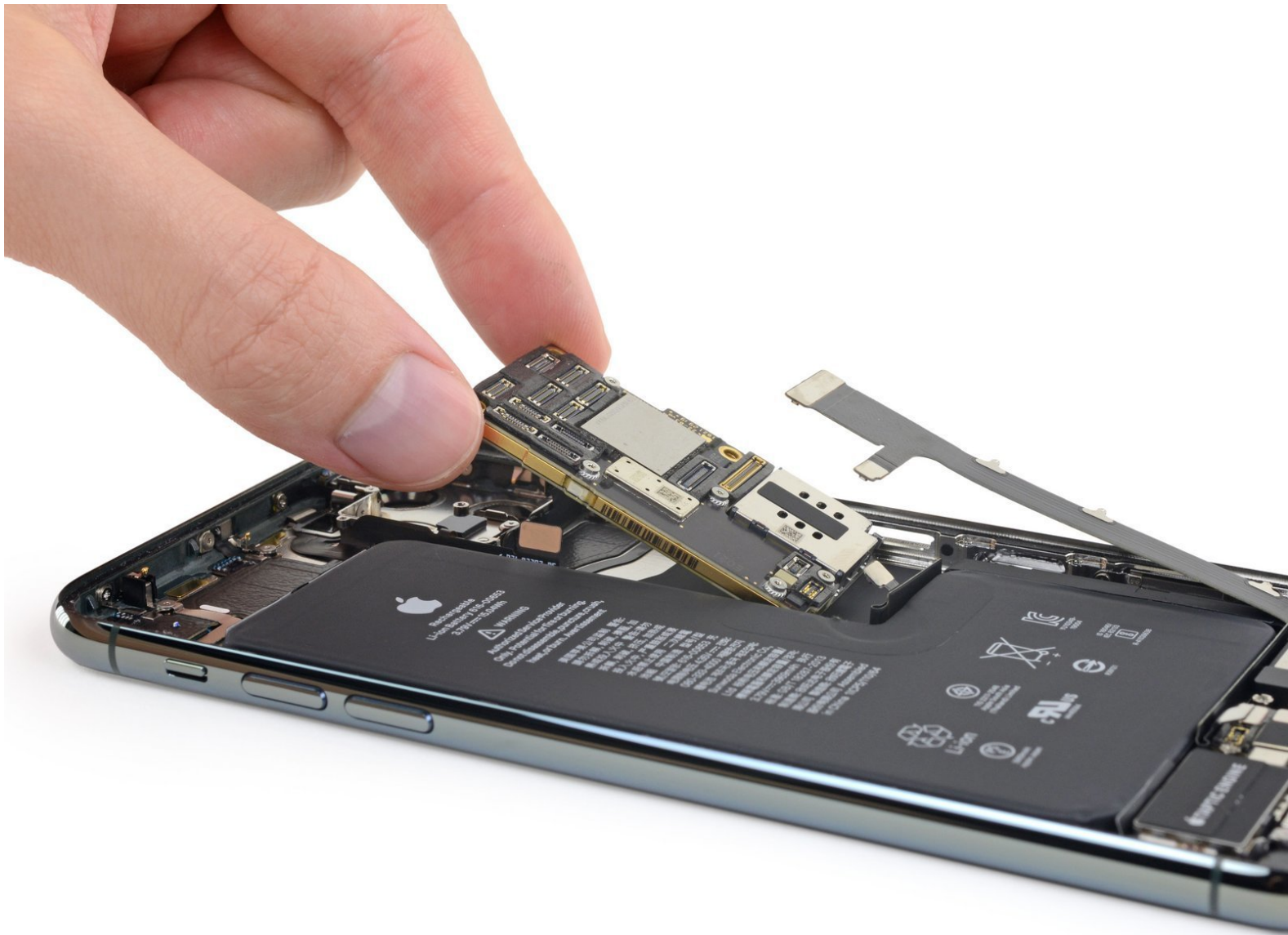




# iPhone 11 Pro Max Logic Board Replacement

How to remove and replace the logic board on the iPhone 11 Pro Max

Written By: Arty



---

## INTRODUCTION

[video: <https://www.youtube.com/watch?v=Rn85i2BxNfI>]

How to remove and replace the logic board on the iPhone 11 Pro Max.

**Note:** Each iPhone's logic board and Face ID + proximity sensor are paired at the factory, so replacing the logic board will disable Face ID *unless* you also install a replacement Face ID module + proximity sensor that has been properly paired to your new logic board.

---

## TOOLS:

- [Suction Handle](#) (1)
  - [Spudger](#) (1)
  - [Tweezers](#) (1)
  - [iFixit Opening Picks set of 6](#) (1)
  - [Phillips #000 Screwdriver](#) (1)
  - [P2 Pentalobe Screwdriver iPhone](#) (1)
  - [Tri-point Y0 Screwdriver](#) (1)
  - [Standoff Screwdriver for iPhones](#) (1)
-

To reassemble your device, follow these instructions in reverse order.