



Nintendo Wii U Console Outer Case Replacement

Installing the Wii U Outer Case.

Written By: Kim Arre



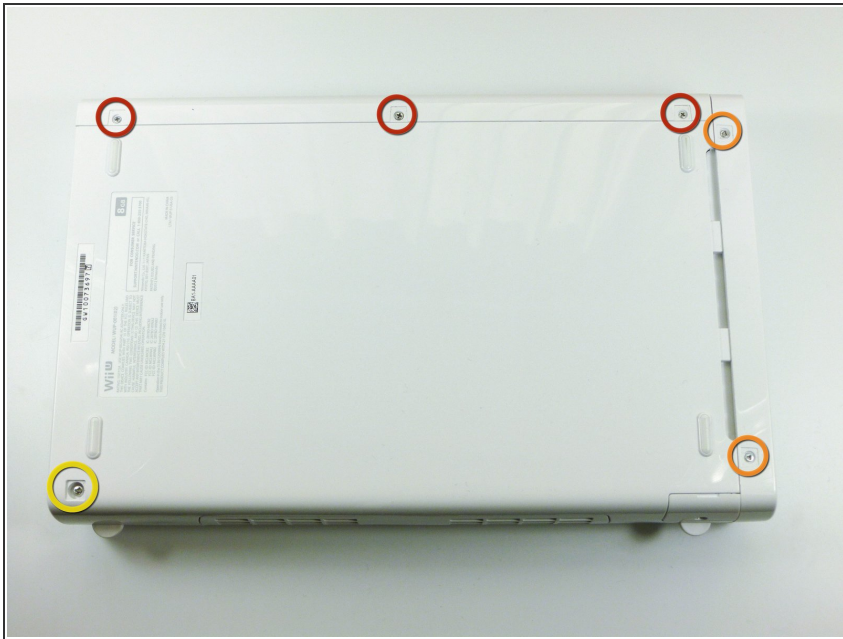
INTRODUCTION

Use this guide to remove the outer case of the Nintendo Wii U and gain access to the DVD drive.

TOOLS:

- [Phillips #0 Screwdriver](#) (1)
 - [Phillips #00 Screwdriver](#) (1)
 - [Tri-point Y0 Screwdriver](#) (1)
 - [Y1 Tri-point Screwdriver](#) (1)
-

Step 1 — Console Outer Case



- With the bottom of the console facing up, remove the following 6 screws hidden underneath the white square stickers:
 - Three 5.1mm Phillips #000 screws
 - Two 6.1mm Tri-wing Y0 screws
 - One 13.2mm Tri-wing Y1 screw

Step 2



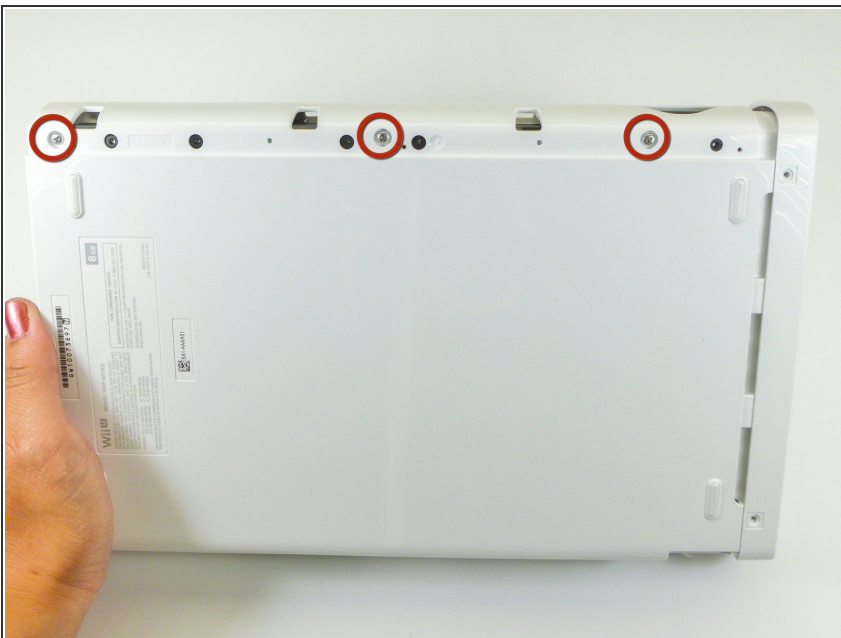
- Rotate the console 180 degrees so that the exhaust vents are facing you.
- Remove the two 7.1mm Phillips #00 screws.

Step 3



- On the side opposite of the exhaust vents, slide the cover faceplate towards the back of the console and pull upwards to release it.

Step 4



- On the bottom of the console beneath the previously removed faceplate, remove the three 13.2mm Tri-wing Y1 screws.

Step 5



- On the back of the console, lift up and release the main top cover.

To reassemble your device, follow these instructions in reverse order.