



Wii U GamePad Battery Replacement

Replace the Wii U GamePad battery.

Written By: Kim Arre



INTRODUCTION

Use this guide to replace the battery in your Wii U GamePad.



TOOLS:

- [Phillips #00 Screwdriver](#) (1)



PARTS:

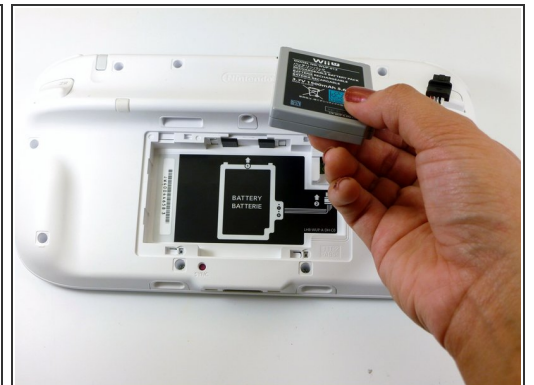
- [Nintendo Wii U GamePad Replacement Battery](#) (1)

Step 1 — Battery



- Face the GamePad down and unscrew the two Phillips #00 screws which are attached to the battery cover.
- Lift up and remove the battery cover.

Step 2



- With your finger on the battery connector, pull downwards toward the base of the GamePad to disconnect it.
- Pull upwards from the bottom of the battery to release it.

To reassemble your device, follow these instructions in reverse order.