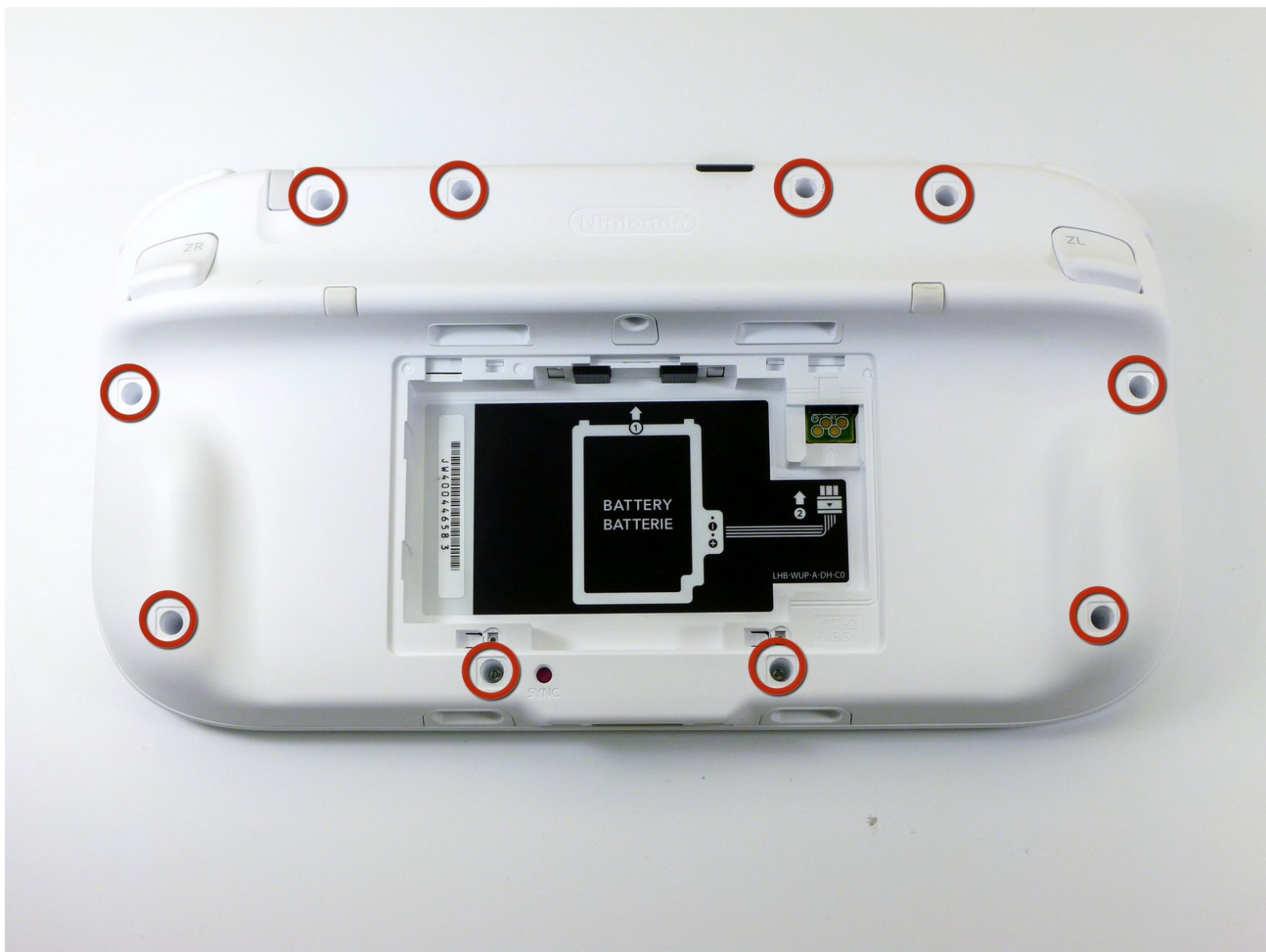




Wii U GamePad Outer Case Replacement

Replace the outer case.

Written By: Kim Arre



INTRODUCTION

Use this guide to replace the outer case on your Nintendo Wii U GamePad.

TOOLS:

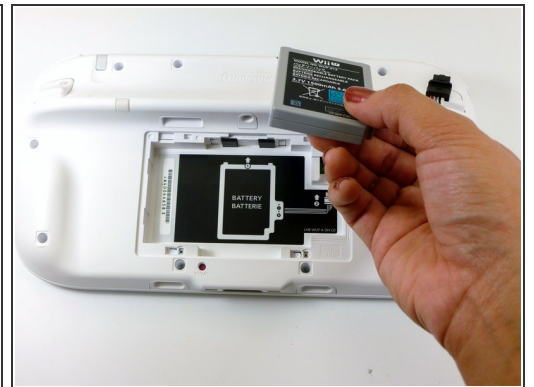
- [Phillips #00 Screwdriver](#) (1)
 - [Y1 Tri-point Screwdriver](#) (1)
-

Step 1 — Battery



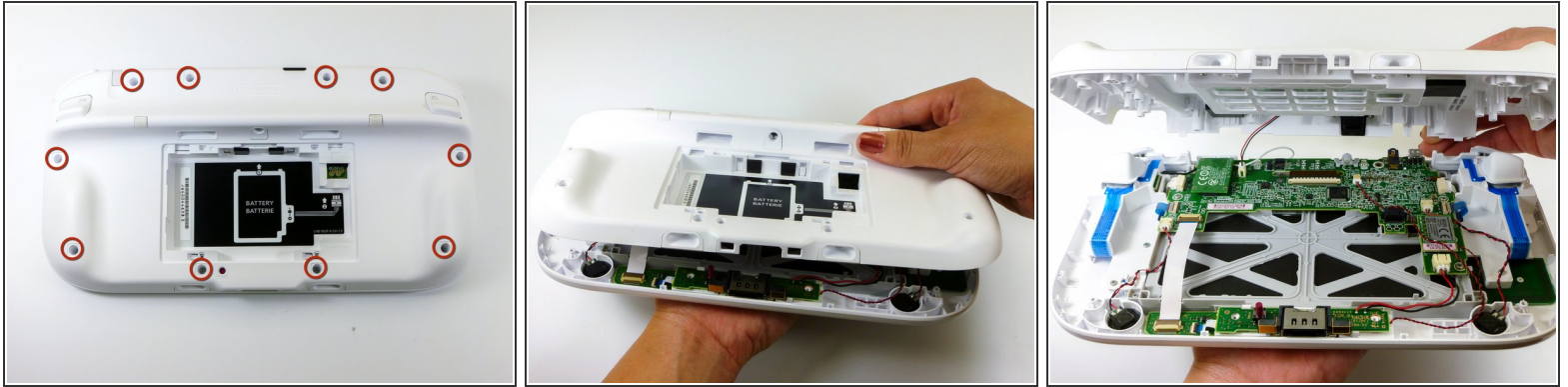
- Face the GamePad down and unscrew the two Phillips #00 screws which are attached to the battery cover.
- Lift up and remove the battery cover.

Step 2



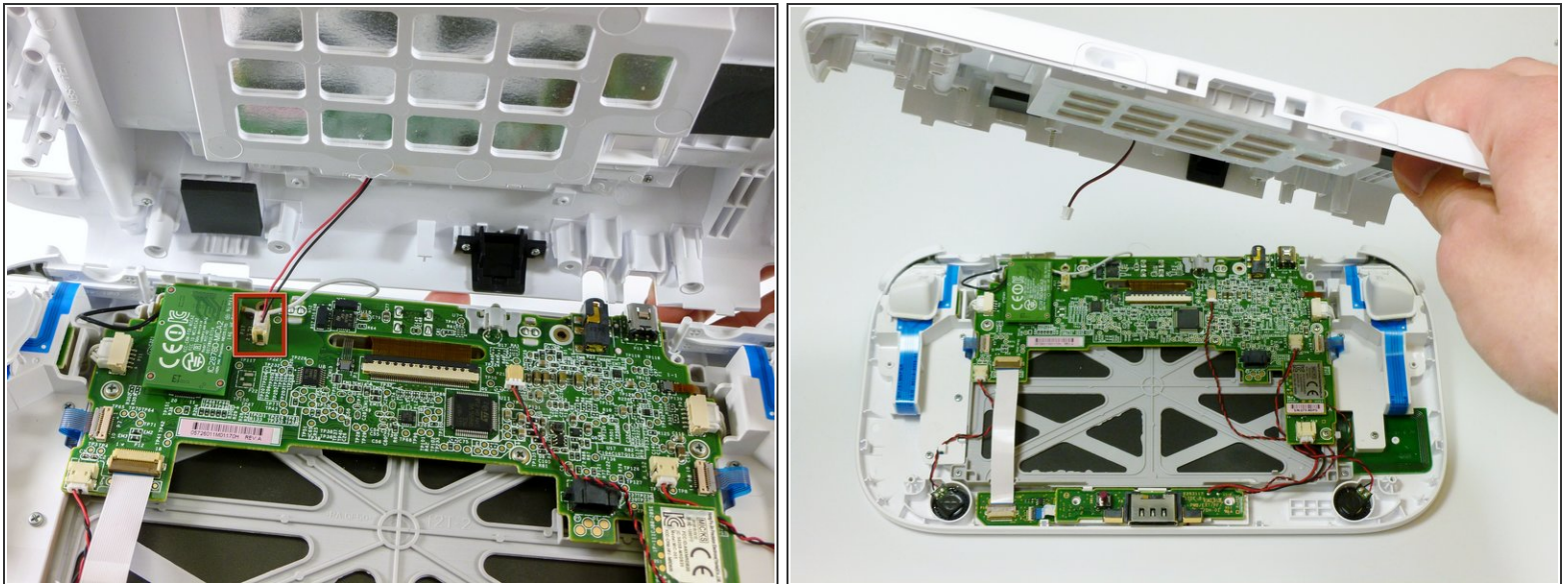
- With your finger on the battery connector, pull downwards toward the base of the GamePad to disconnect it.
- Pull upwards from the bottom of the battery to release it.

Step 3 — Outer Case



- Remove the ten 8.9mm Tri-wing Y1 screws hidden underneath square stickers.
 - Lift up the back plate.
- ⚠ The back plate is still connected by a cable to the motherboard.

Step 4



- Unplug the connector that connects the back plate to the motherboard.
- Remove the back plate.

To reassemble your device, follow these instructions in reverse order.

This document was last generated on 2019-07-11 03:26:38 AM.