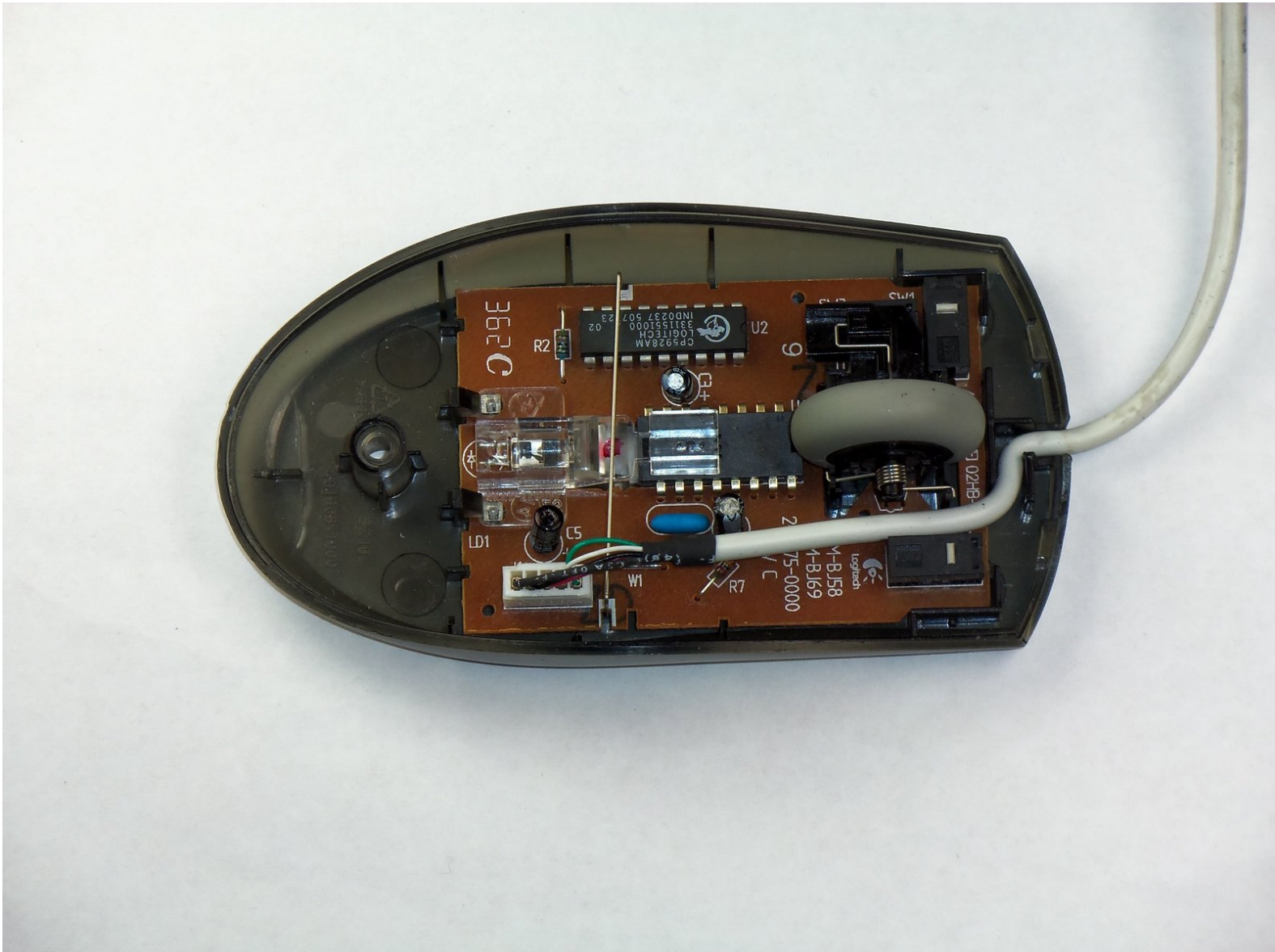




Removing the Logitech MBJ58 Mouse Scroll Wheel

This is a prerequisite for replacing the support and resistance springs and the scroll wheel.

Written By: Conor Whatley



INTRODUCTION

After removing the cover, removing the scroll wheel will allow access to the springs and the wheel itself.

TOOLS:

- [Phillips #1 Screwdriver](#) (1)
-

Step 1 — Top cover



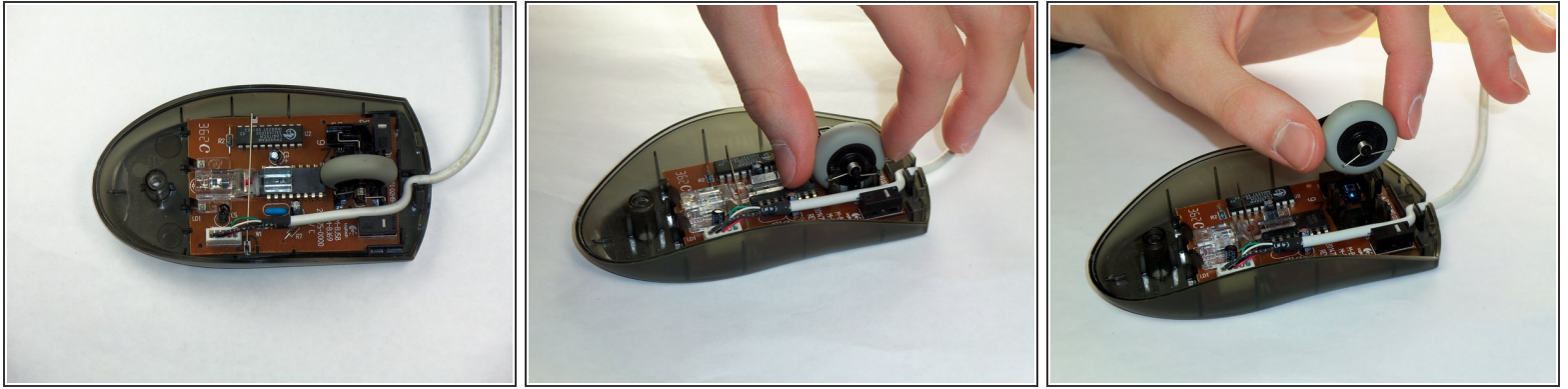
- Hold the mouse so that the bottom is facing up.
- Locate the #1 screw towards the bottom half of the mouse.
- Take the 4.76 mm Phillips screwdriver and unscrew the #1 screw.

Step 2



- Place the mouse so that the bottom is resting against a hard surface .
- Gently lift the top cover of the mouse and remove.

Step 3 — Scroll Wheel



- Locate the scroll wheel on the mouse.
- Grab the scroll wheel with your thumb and index finger.
- Gently lift up to remove the scroll wheel from the mouse.

To reassemble your device, follow these instructions in reverse order.

This document was last generated on 2019-04-24 04:19:03 AM.