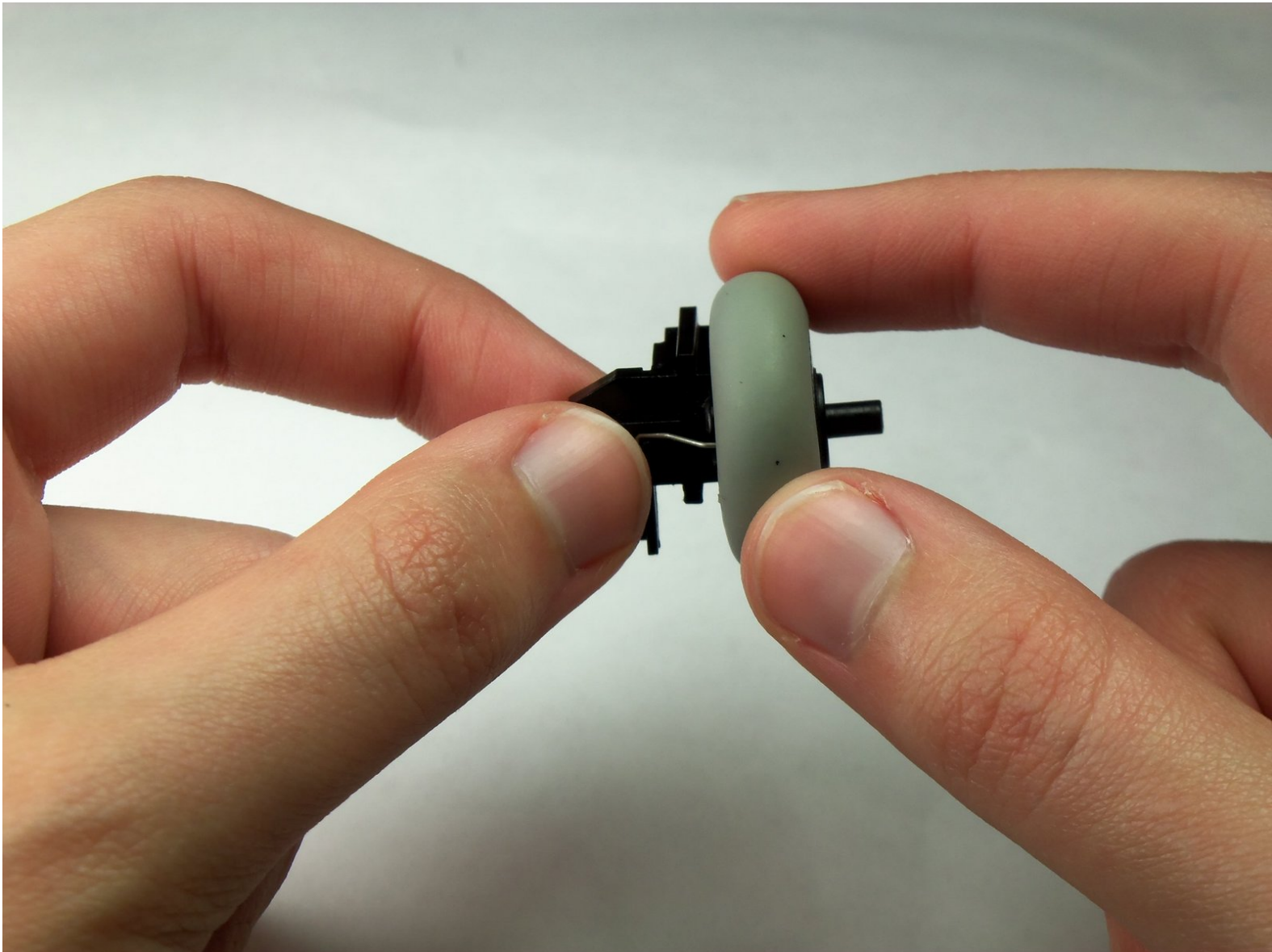




Disassembling Logitech MBJ58 Mouse Scroll wheel from mount

You will part the scroll wheel from the mount.

Written By: Maximilian Betkowski



INTRODUCTION

You will learn how to remove the scroll wheel from mount.

TOOLS:

- [Phillips #1 Screwdriver](#) (1)
-

Step 1 — Top cover



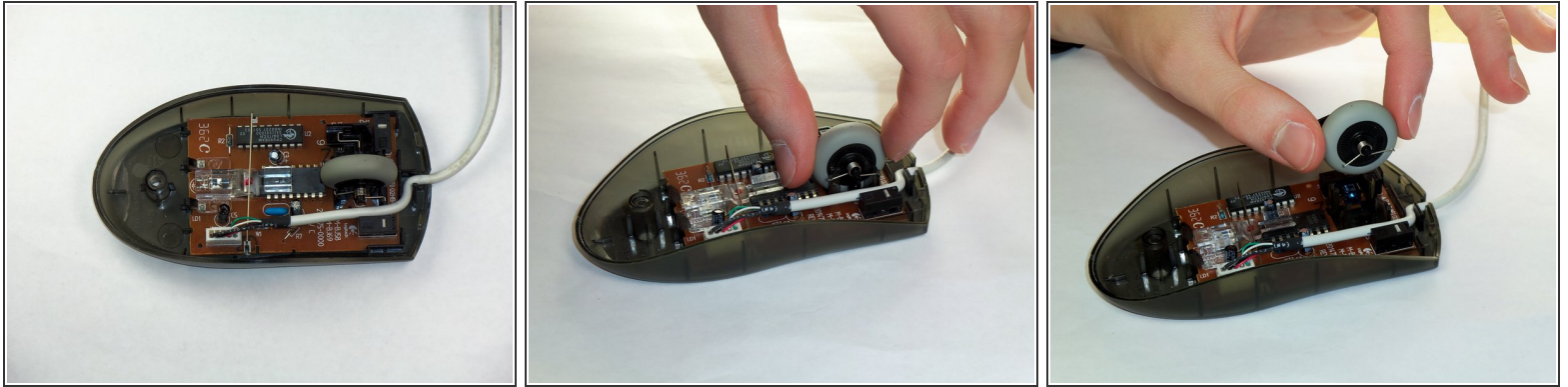
- Hold the mouse in your hand so that the bottom side is facing upward.
- Locate the #1 screw towards the bottom half of the mouse.
- Take the 4.76 mm Phillips screwdriver and unscrew the #1 screw that was previously located.

Step 2



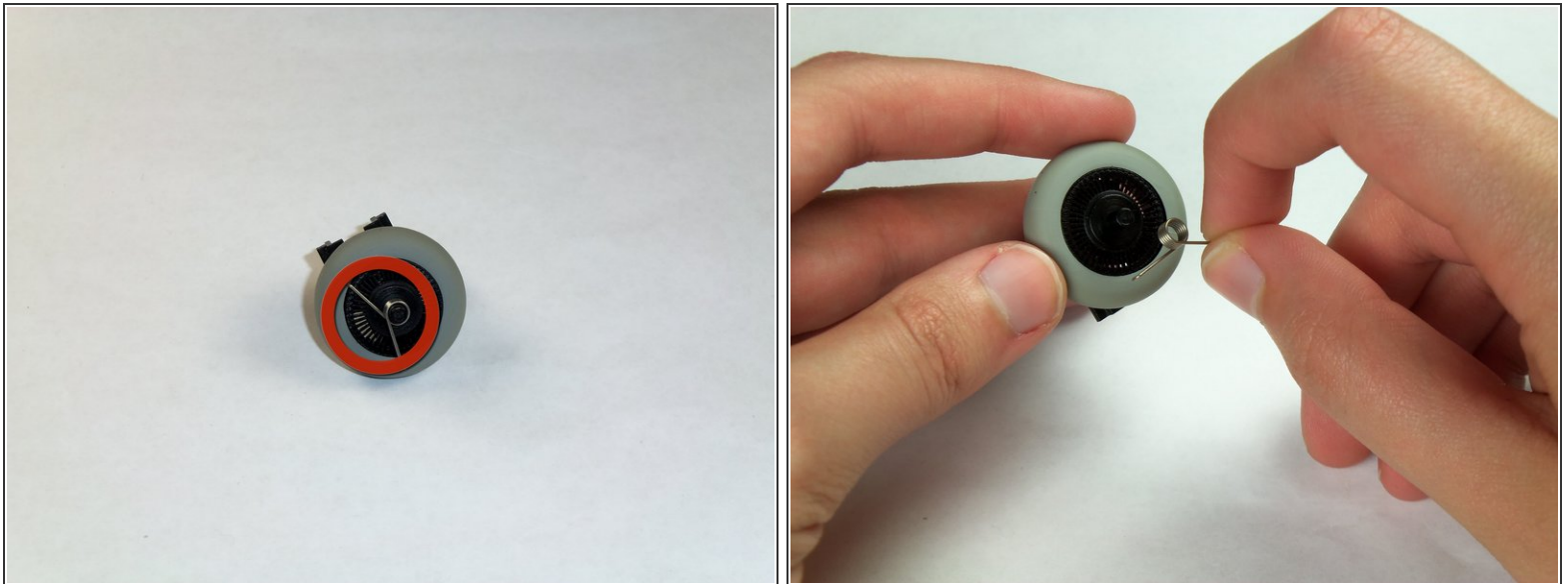
- Place the mouse so that the bottom is resting against a hard surface .
- Gently lift the top cover of the mouse and remove.

Step 3 — Scroll Wheel



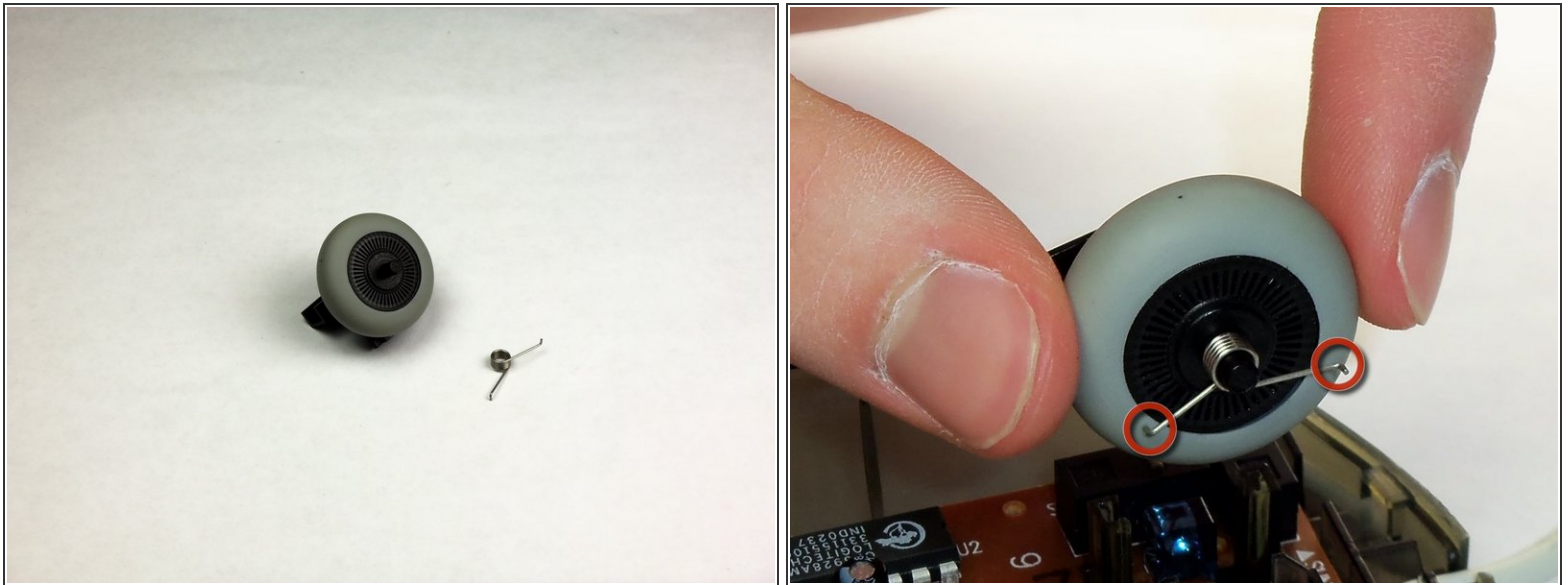
- Locate the scroll wheel on the mouse.
- Grab the scroll wheel with your thumb and index finger.
- Gently lift up to remove the scroll wheel from the mouse.

Step 4 — Support Spring



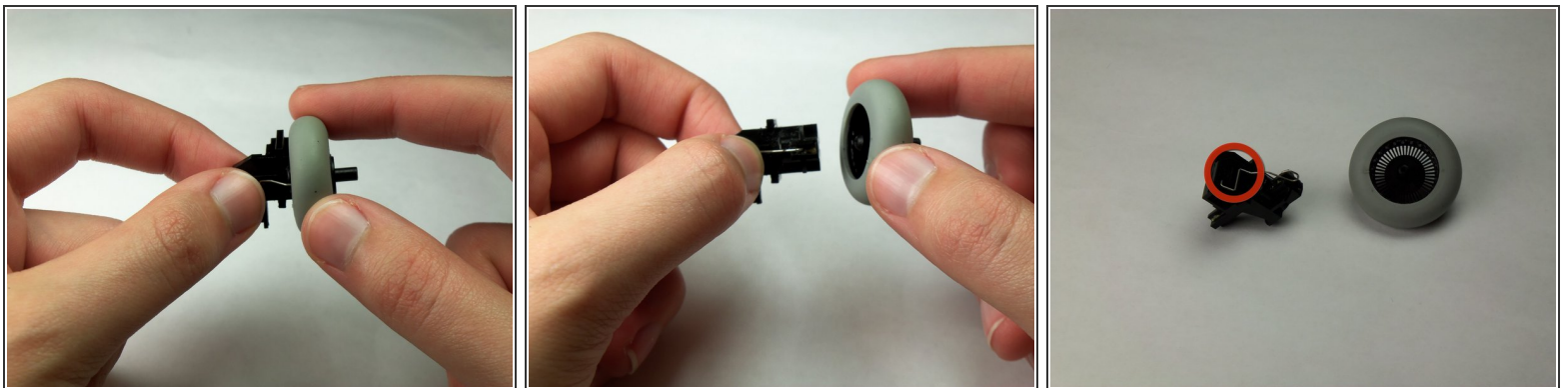
- Locate the spring on the scroll wheel. The spring looks like a small, metal piece of wire, coiled up in the middle.
- Very carefully, remove the spring from the wheel scroll.

Step 5 — Attaching the New Spring



- Replace the spring, place it on the correct side of the wheel with the prongs pointing down.
- ⓘ The correct side is the side without the black plastic square, as shown in the photos.

Step 6 — Disassembling Logitech MBJ58 Mouse Scroll wheel from mount



- Be aware of where the resistance spring is.
 - ⚠ This spring will easily fall off.
- Grab the scroll wheel and its mount and gently pull them apart.

To reassemble your device, follow these instructions in reverse order.

