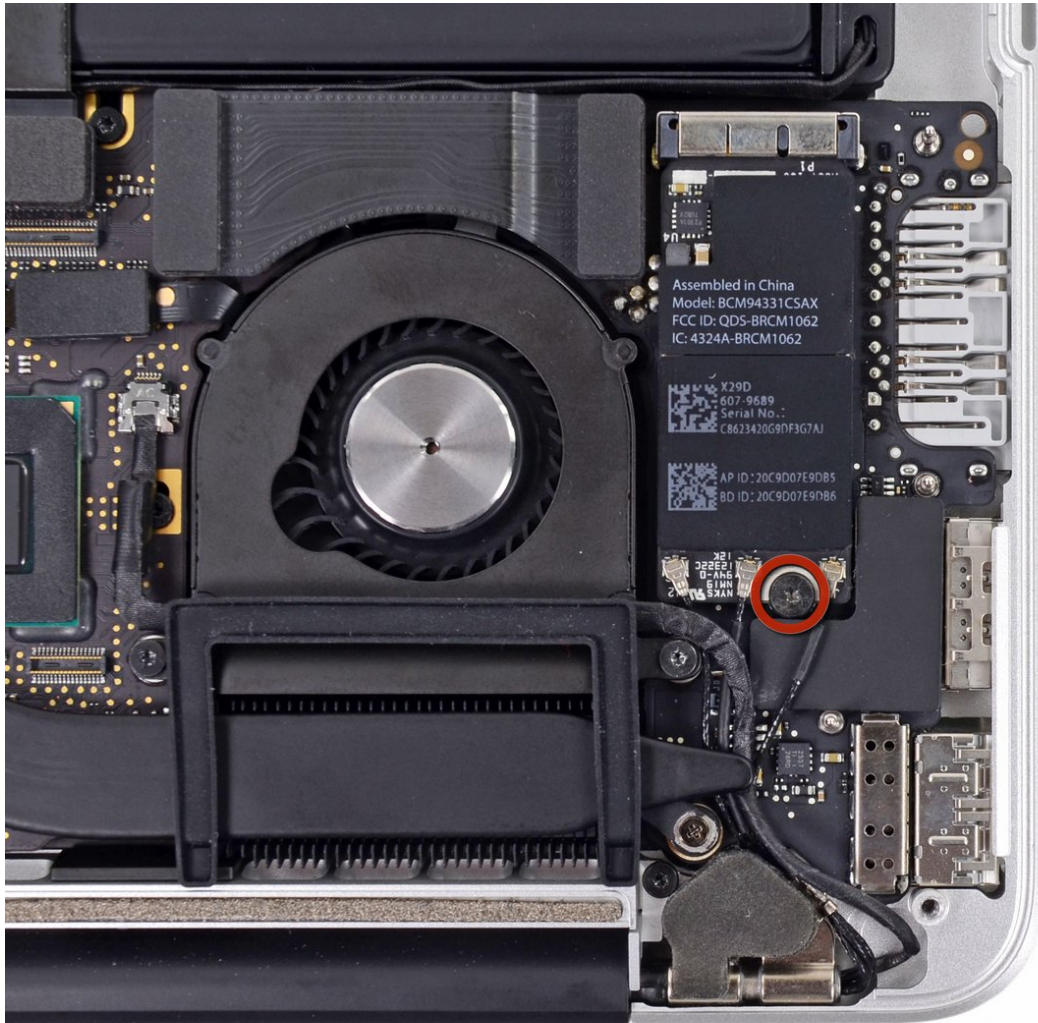




# MacBook Pro 13" Retina Display Late 2012 AirPort Board Assembly Replacement

Prereq only.

Written By: Walter Galan



---

## INTRODUCTION

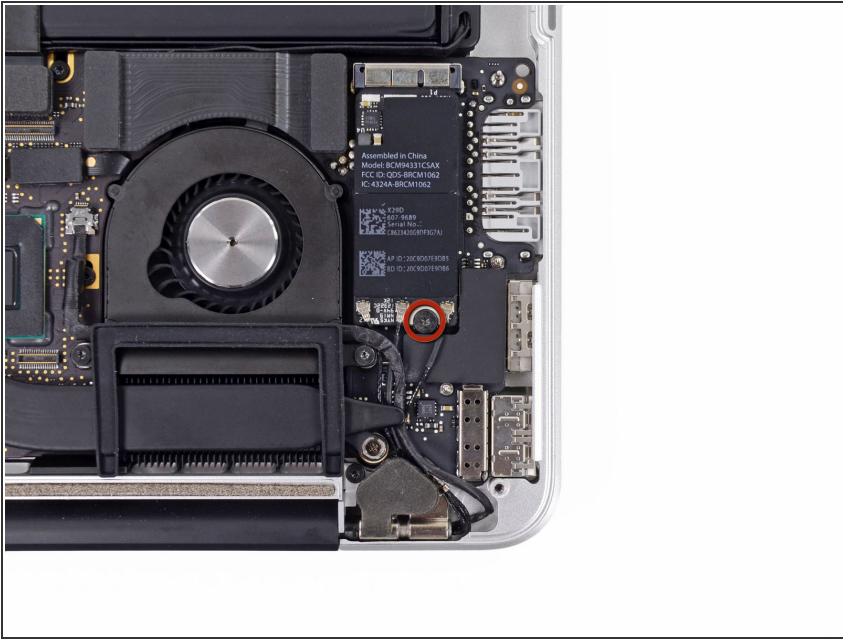
Prereq only.

---

### TOOLS:

- [iFixit Opening Tools](#) (1)
  - [Spudger](#) (1)
  - [T5 Torx Screwdriver](#) (1)
-

## Step 1 — AirPort Board Assembly



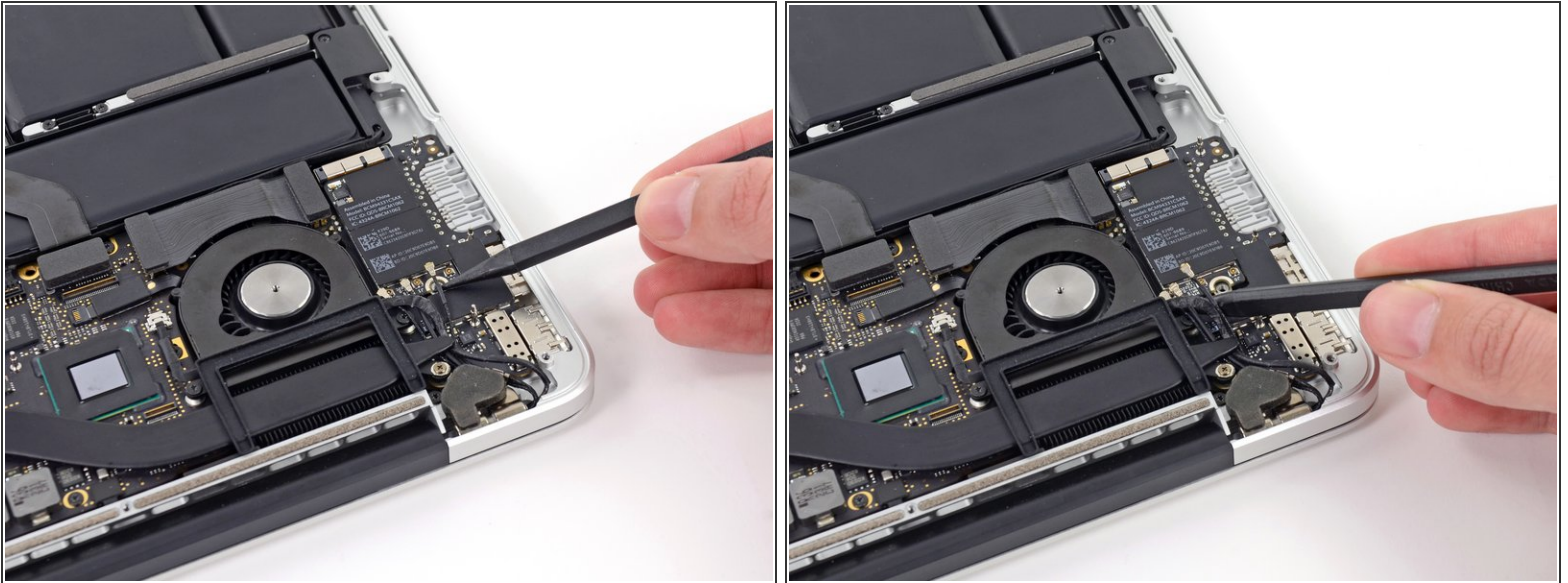
- Remove the single 2.7 mm T5 Torx screw securing the AirPort board to the I/O board.

## Step 2



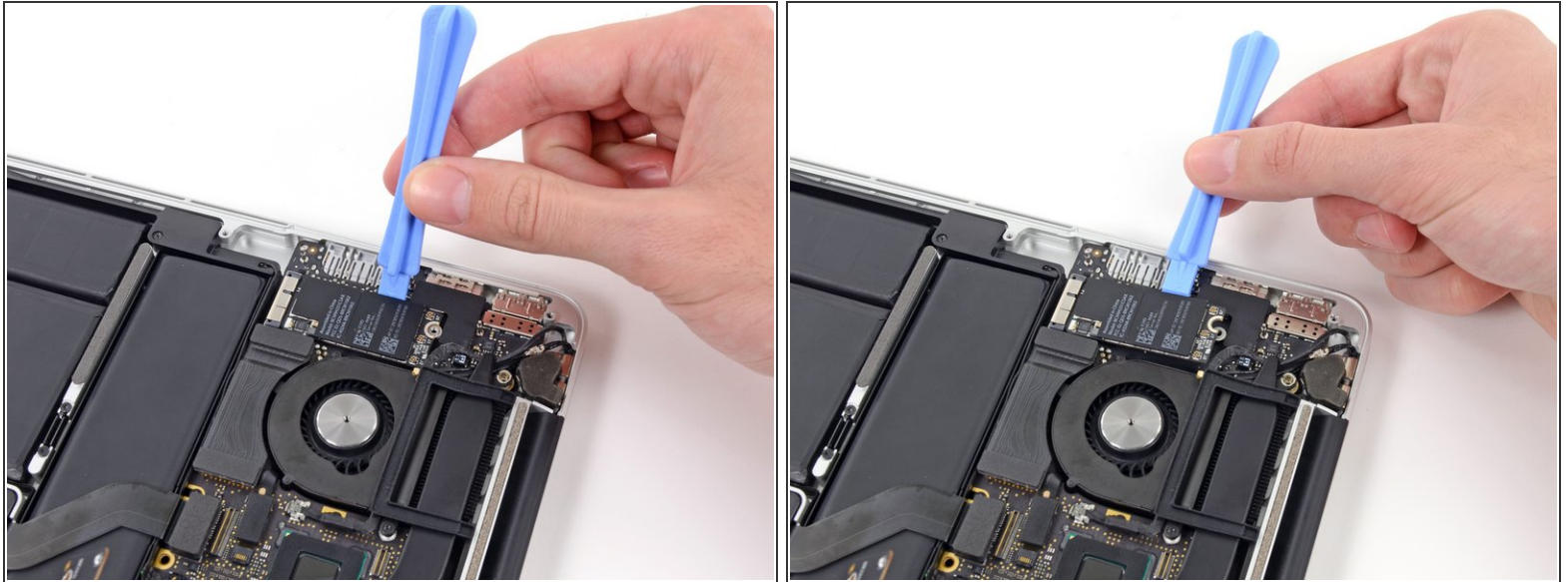
- Use the flat end of a spudger to pry and disconnect the three antenna cable connectors from the AirPort board.
- ☛ The three cables are coded with black sleeves of different lengths. During reassembly:
  - Connect the long-sleeved cable to the center socket.
  - The short-sleeved cable connects next to the screw.
  - The remaining cable has no sleeve, and connects in the last empty socket, next to the fan.


### Step 3



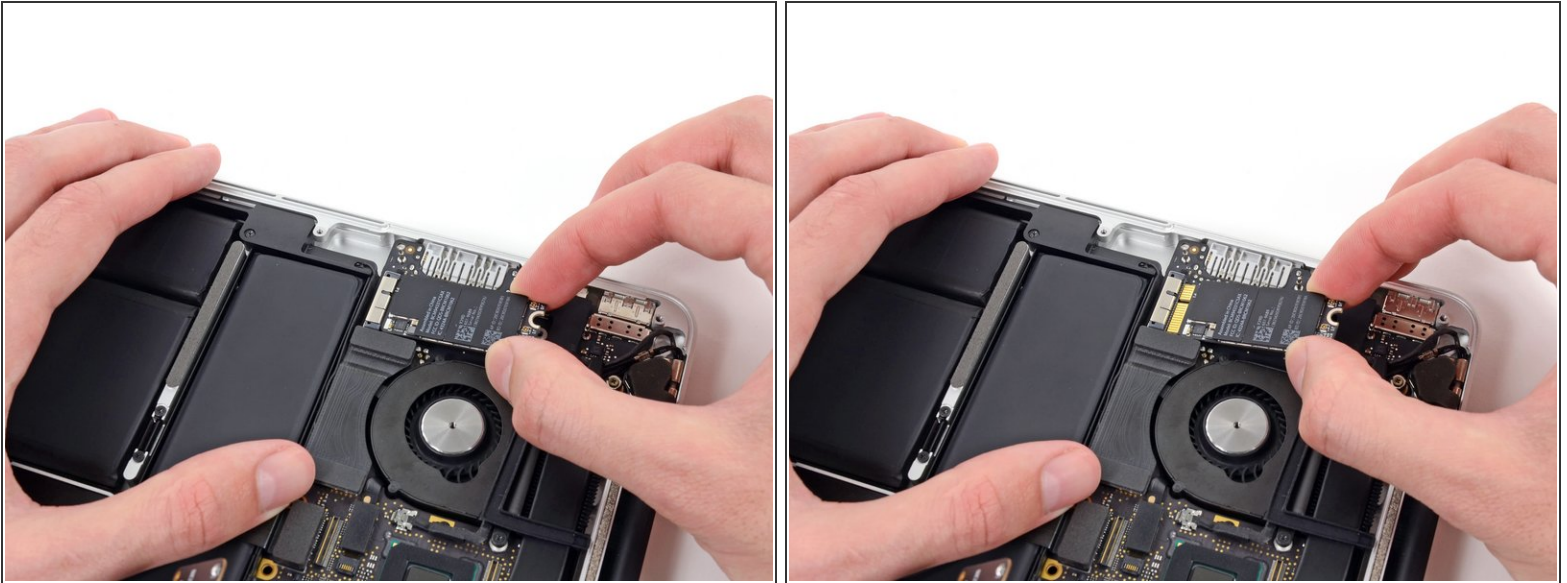
- Move the antenna cables aside, clear of the AirPort board.

## Step 4



- Wedge a plastic opening tool between the AirPort board (side nearest the I/O ports) and the I/O board.
  - Gently pry the AirPort board upwards, but do **not** remove it.
-  Only lift the AirPort board as much as is necessary to get a grip on it. Lifting it too high above the I/O board may damage the board or the socket.

## Step 5



- Pull the AirPort board straight out of its socket on the I/O board.

To reassemble your device, follow these instructions in reverse order.