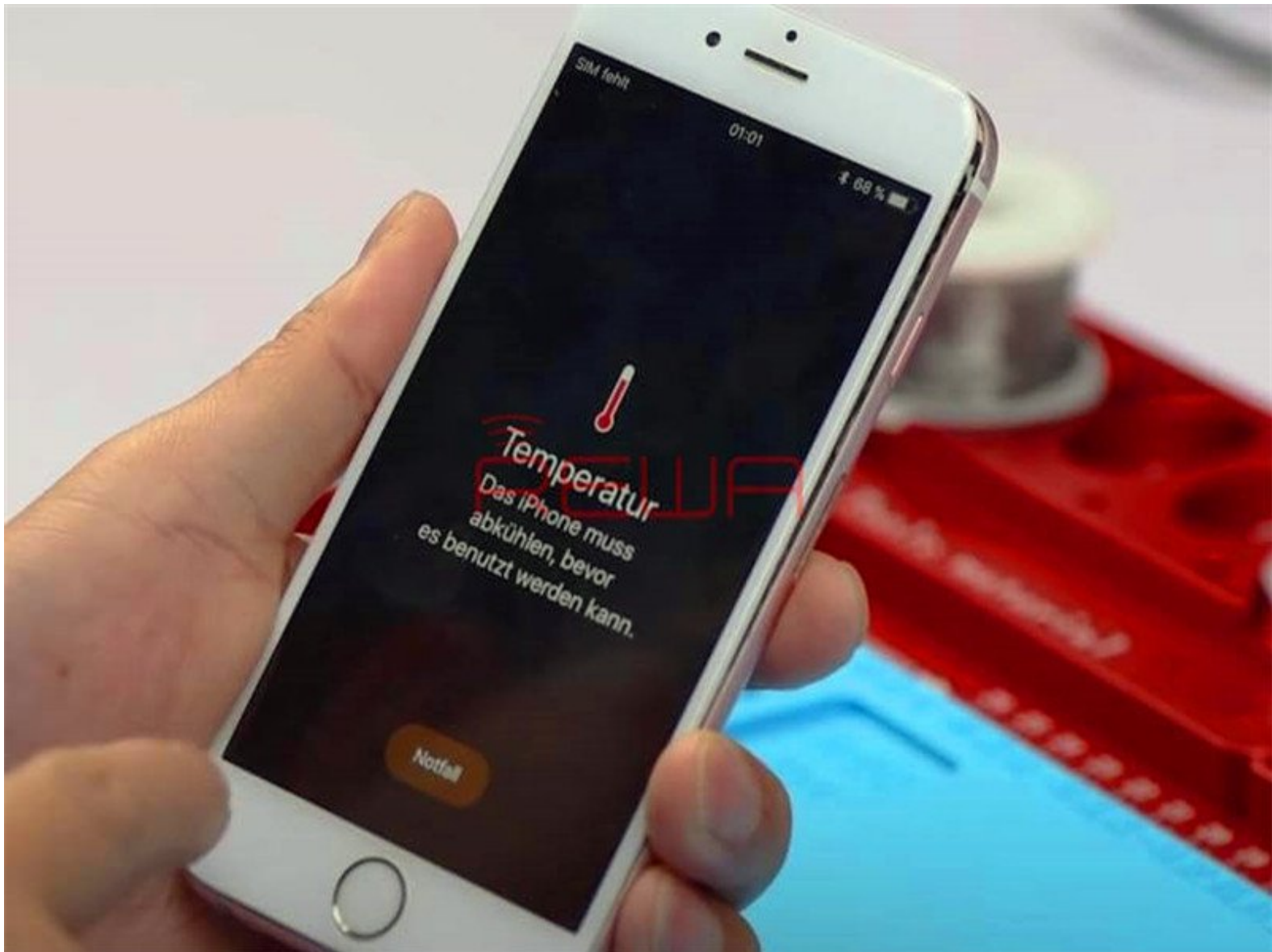




# How to Fix iPhone 6s Overheating Problem

How to Fix iPhone 6s Overheating Problem

Written By: Phryne



## INTRODUCTION

iPhone 6s comes with a high-temperature warning screen after turning on. Usually the problem is caused by excessive running apps. Yet in our repair guide today, we are working with logic board repair. After current detecting and rosin detecting, we can confirm that the problem was caused by damaged capacitors inside the WiFi module. With our repairing experience, we adopt a new repair solution to fix the issue.

## Step 1 — Problem



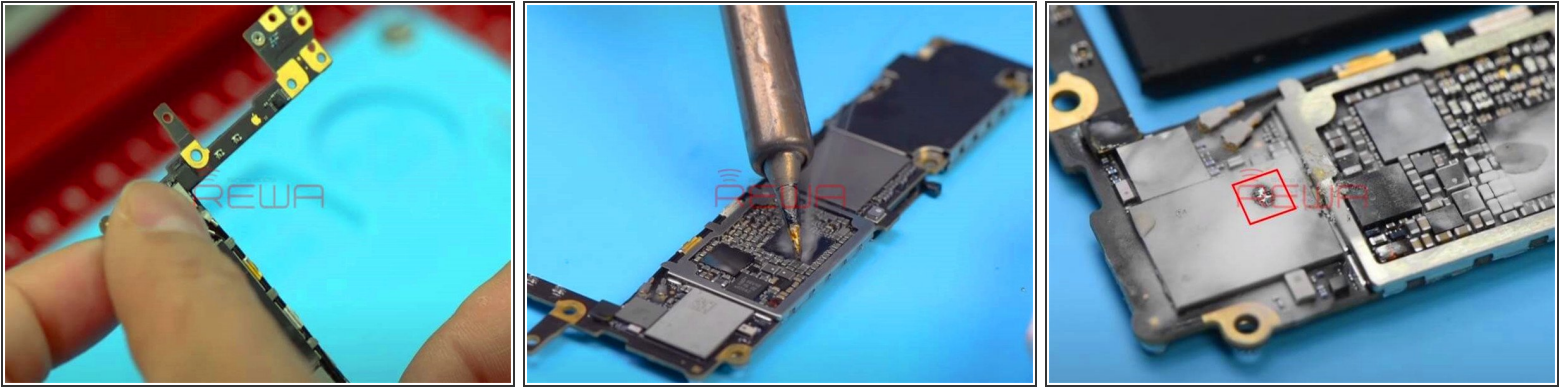
- The phone turns on with normal display. Yet, with the phone running for 3 minutes, the screen suddenly dims. And a high temperature warning screen appears. The phone then goes with black screen.

## Step 2 — Analysis



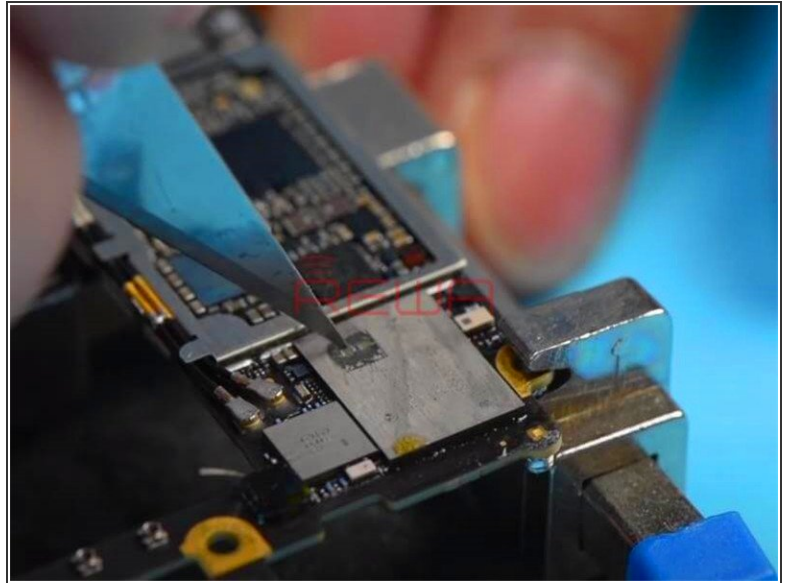
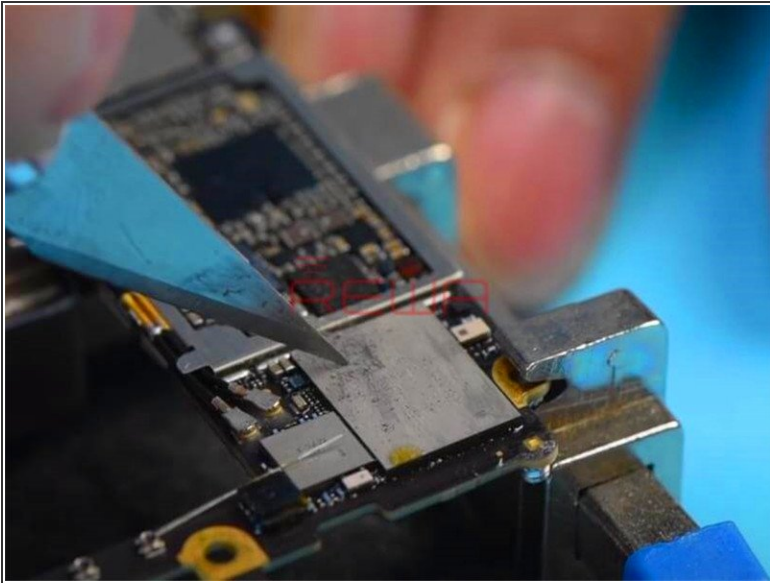
- Connect the logic board with DC Power Supply and power on. Current reading on the ammeter is abnormal and the phone keeps restarting.
- Pre-judgment: abnormal boot current causes the logic board burning issue which results in high temperature warning screen on the phone.

### Step 3 — Diagnosis



- Touch the logic board with the spare hand. A sensation of burning can be experienced on area from the power chip to WiFi module.
- Then we need to confirm the specific fault position with 'rosin detecting'.
- Use Soldering Iron to smoke rosin on components of the burning area. 15s later, rosin on the WiFi module starts to melt. We can confirm the fault component as WiFi module.

## Step 4 — Troubleshooting



- ⓘ Burning issue of components inside the WiFi module can be related to capacitors inside the WiFi module or chips inside the WiFi module.
- Based on repairing experience, two capacitors are located right under the rosin melted position. The fault was caused by the two capacitors.
- Confirm the rosin melted position on surface of the WiFi module at first. Then scrape off the specific surface and heat with Hot Air Gun for 5s. Pry up the capacitors with sculpture knife.
- ⚠ Once done, stick high temperature adhesive tape on the WiFi module for insulation.

## Step 5 — Reassemble And Test



- Connect the logic board with DC Power Supply to power on. Current reading on the ammeter is normal this time and the phone stops restarting. The logic board also does not burn.
- Continue to test WiFi function and all going well.