



MacBook Pro 13" Retina Display Late 2012

SSD Assembly Replacement

Prereq for removing the upper case and battery.

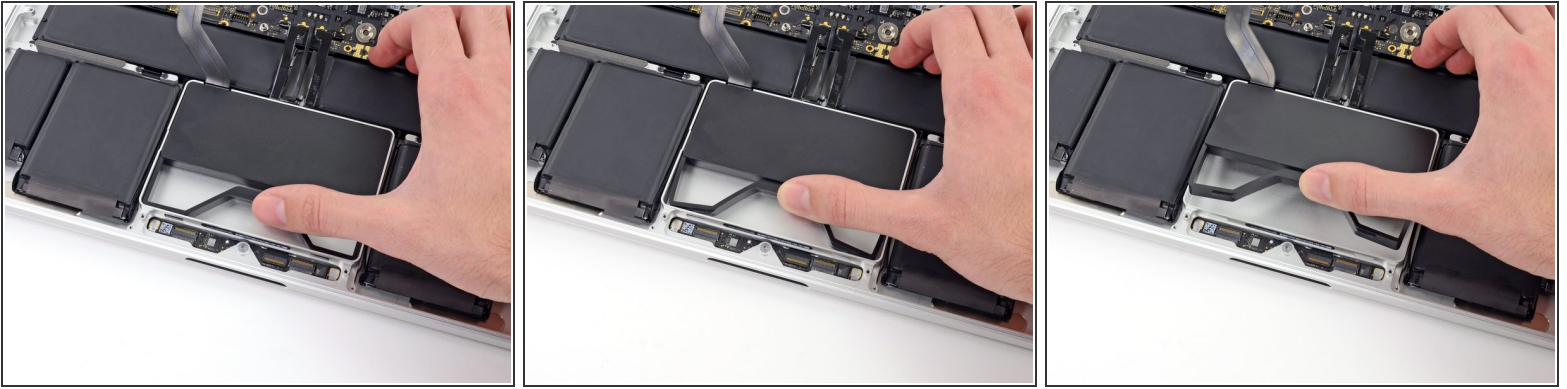
Written By: Walter Galan



INTRODUCTION

Prereq for removing the upper case and battery.

Step 1 — SSD Assembly



- Use your thumb or finger to bend the plastic spring bar on the SSD tray, freeing the two clips at the front side of the device.
- While holding the spring bar depressed, tilt the SSD assembly up out of its cavity.

Step 2



- Remove the SSD assembly from the upper case.

To reassemble your device, follow these instructions in reverse order.