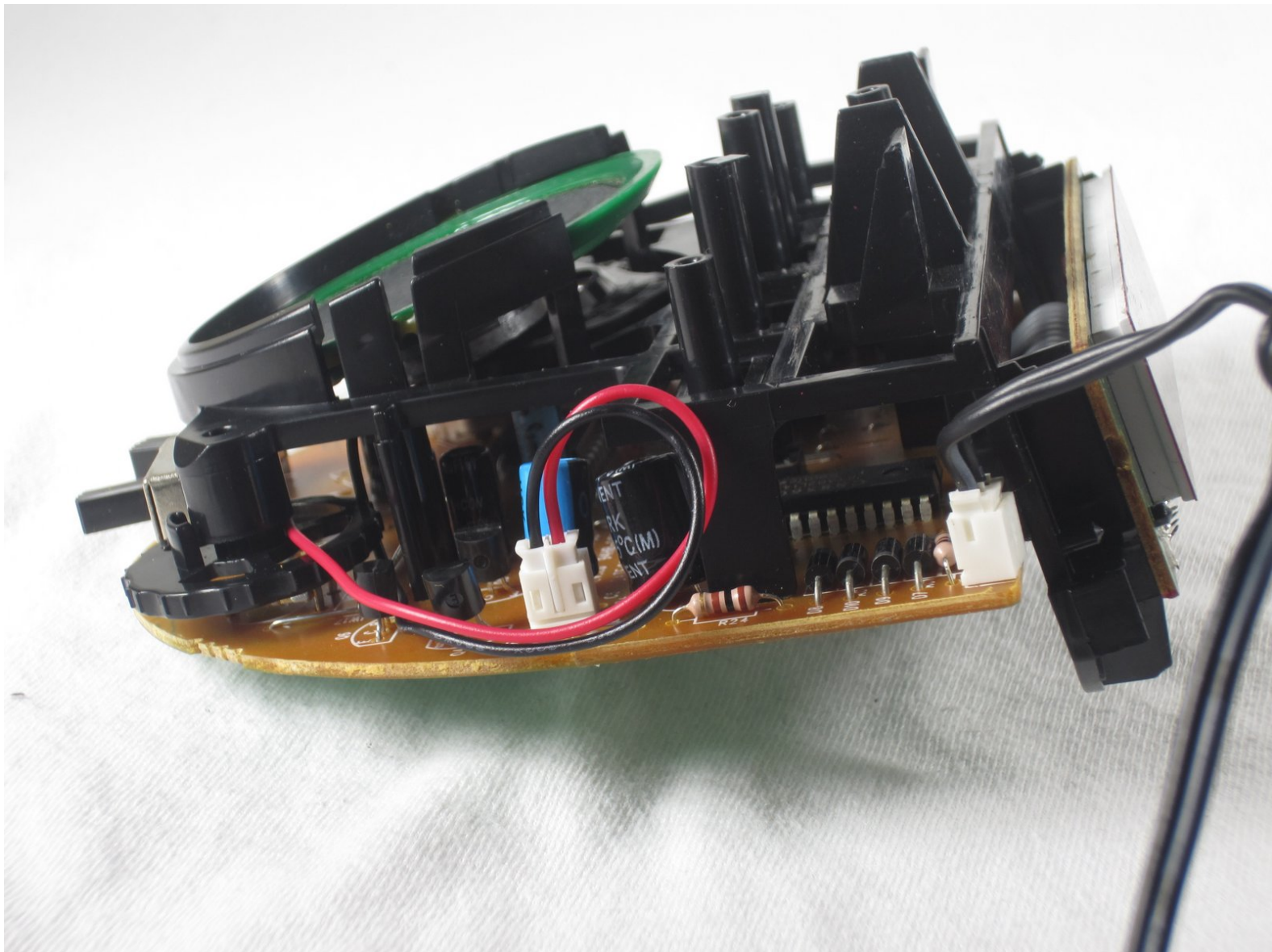




Venturer CR20 Power Cord Replacement

Replace your power cord to bring back life to your alarm clock.

Written By: Robert Myers



INTRODUCTION

In this guide, you will learn how to remove and install the power cord of your alarm clock. The process consists of removing the front screen, followed by taking the hardware out of the housing and detaching the power cord.

TOOLS:

- [Phillips #0 Screwdriver](#) (1)
-

Step 1 — Front Screen



- Locate and unscrew the single 2mm Phillips screw from the clock.

Step 2



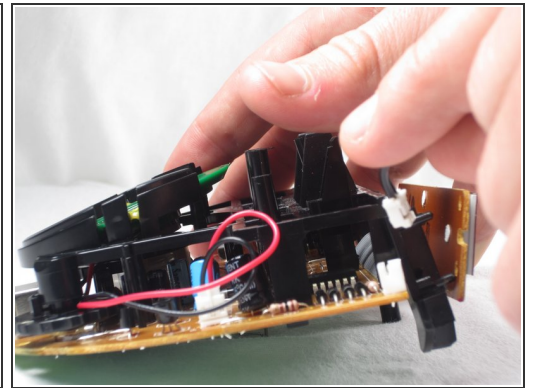
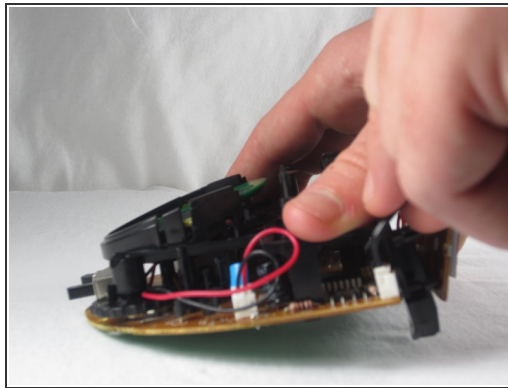
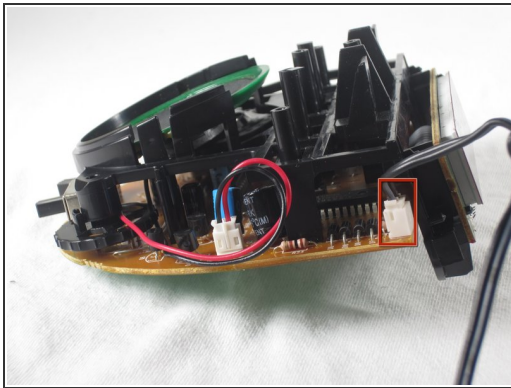
- Using a moderate amount of force, position the screwdriver in the crack of the front screen (as shown) and push away from the clock.

Step 3 — Power Cord



- Get a good grip on the hardware within the shell and pull it all out.

Step 4



- With your fingers, pull the power cord connector, outlined in the picture with a red rectangle straight up to disconnect from the alarm clock.

To reassemble your device, follow these instructions in reverse order.

This document was last generated on 2019-08-20 06:54:03 AM.