



Samsung BlackJack II Battery Replacement

Remove or install the battery to your phone.

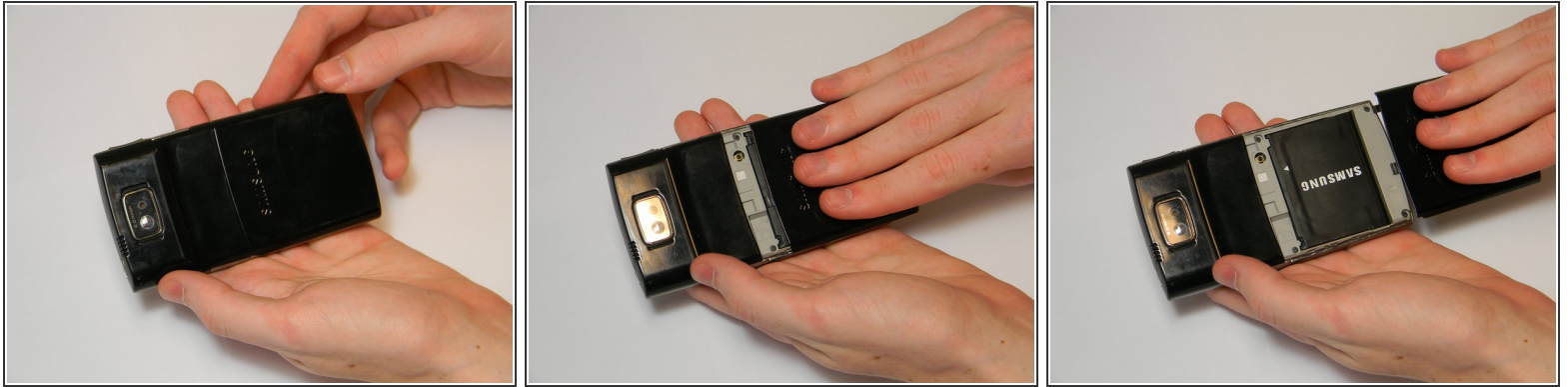
Written By: Ryan Rumsey



INTRODUCTION

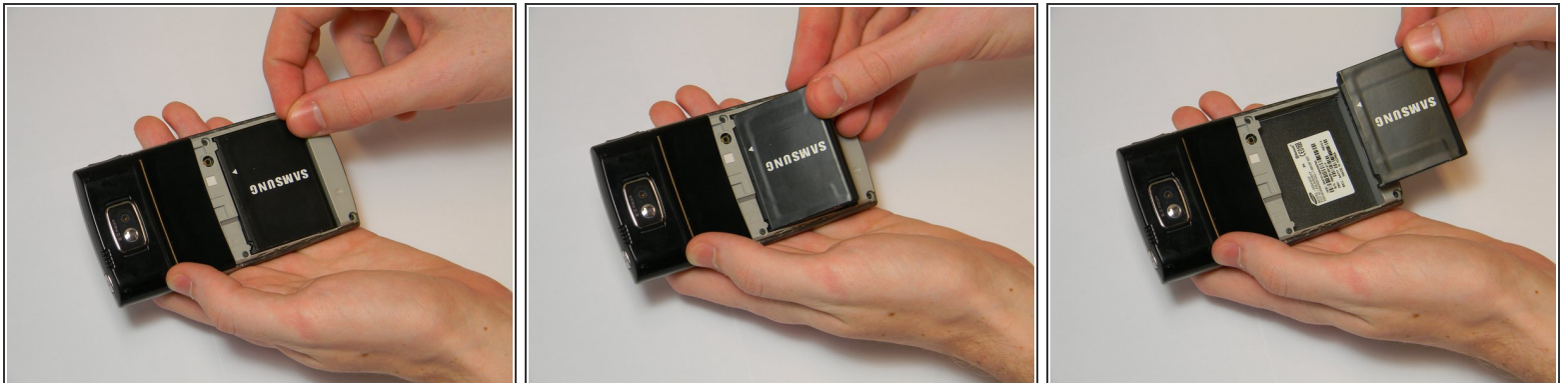
Use this guide to install, remove, or replace the battery. This guide is useful for the [Troubleshooting Page](#).

Step 1 — Battery



- Apply downward pressure to the top of the battery panel while pulling down to slide it off the phone.

Step 2



- Locate the grooves on the sides of the battery near the bottom of the phone. Use your fingers to pull the battery up and out of the phone.

To reassemble your device, follow these instructions in reverse order.