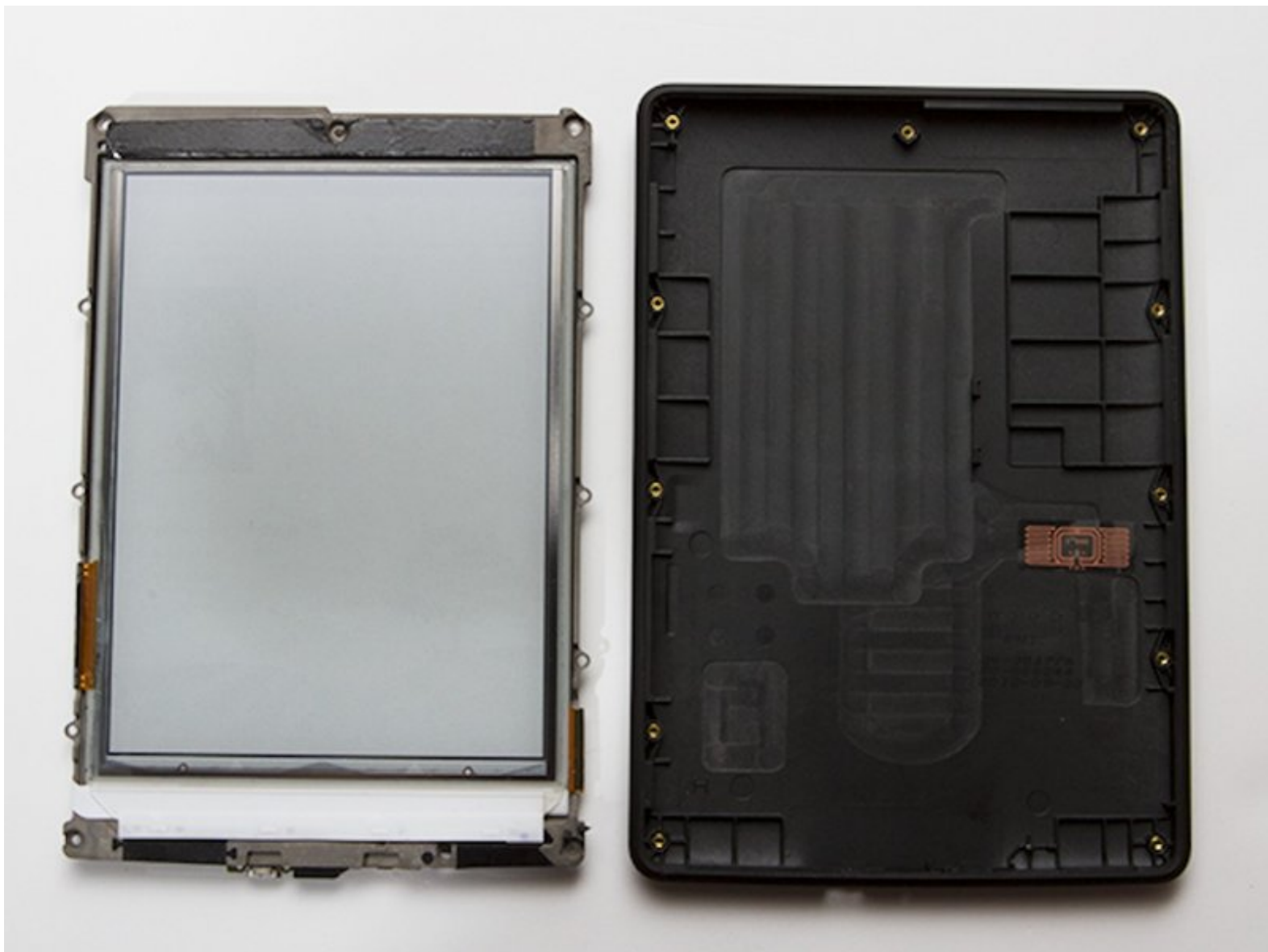




Kindle Paperwhite 1st Generation Case Replacement

This guide shows you how to install a new case onto your Kindle Paperwhite.

Written By: Anthony Nahal



INTRODUCTION

The case of your Kindle Paperwhite gets a lot of abuse from everyday life. Replace a cracked or a scratched case to restore that fresh out-of-the-box feeling.

TOOLS:

- [Phillips #2 Screwdriver](#) (1)
 - [iFixit Opening Tools](#) (1)
-

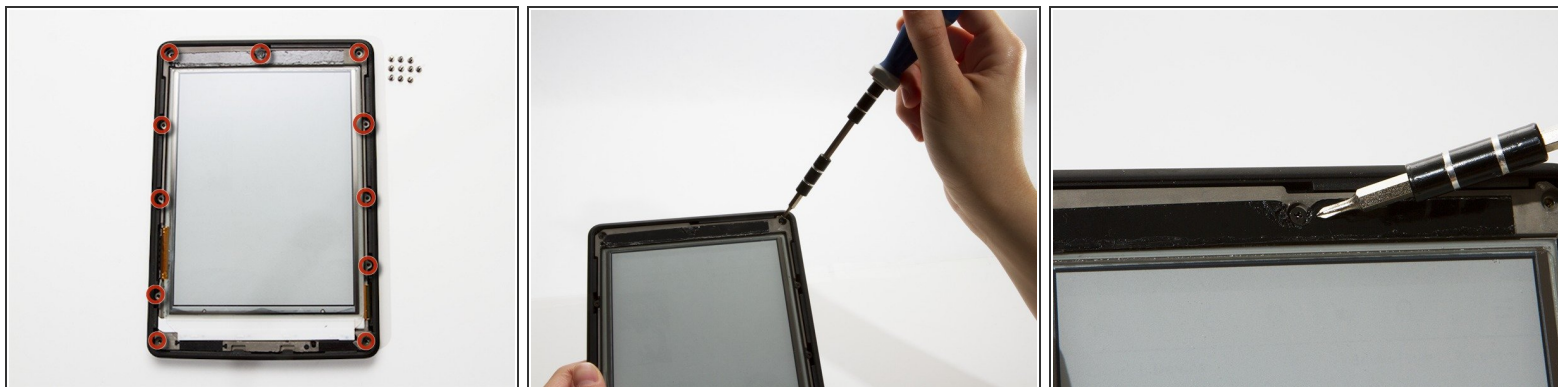
Step 1 — Case



- Using a spudger or plastic opening tool, gently pry the bezel from the screen. It is easier to start in the corners and work your way around the bezel.

⚠ Do not insert the spudger too far under the bezel; it could easily damage the screen.

Step 2



- Remove the eleven 3.0 mm Phillips screws surrounding the midframe.

ⓘ At the top of the display, a strip of black tape covers one screw.

Step 3



- Lift the midframe out of the case.
- ⓘ If the midframe is stuck, slide it to the left first, and then lift it out.

To reassemble your device, follow these instructions in reverse order.

This document was last generated on 2019-07-17 09:40:43 AM.