



# Motorola Moto E5 SIM Card Tray Replacement

Replace a SIM card tray or switch out a SIM card on your Motorola Moto E5.

Written By: Craig Lloyd



---

## INTRODUCTION

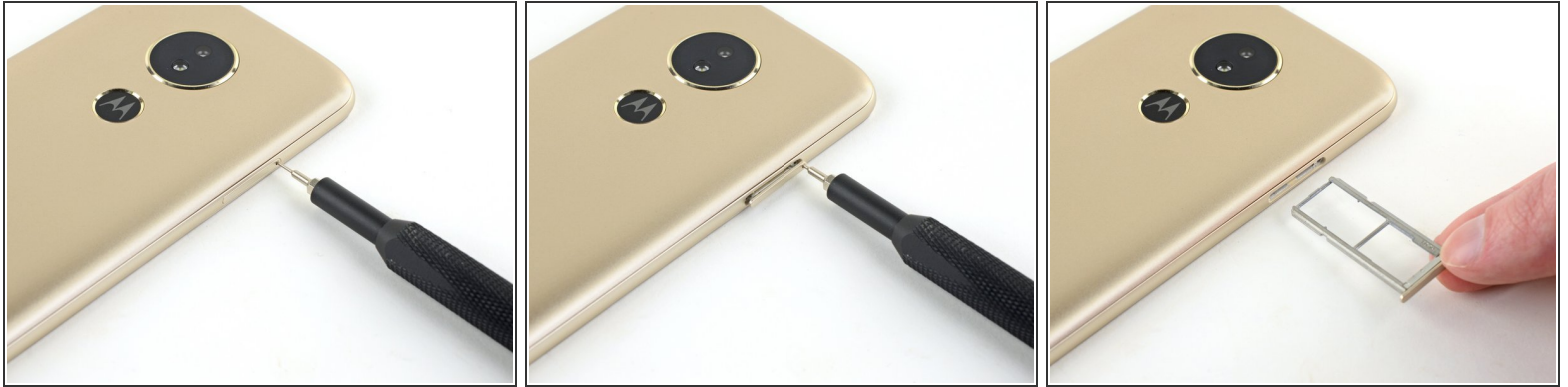
Follow this guide to switch out the SIM card or replace the SIM card tray for the Motorola Moto E5.


---

### TOOLS:

- [SIM Card Eject Tool](#) (1)
-

## Step 1 — SIM Card Tray



 Be sure to power off your phone before you begin.

- Use a SIM eject bit, SIM eject tool, or paper clip to remove the SIM card from the phone.

To reassemble your device, follow these instructions in reverse order.