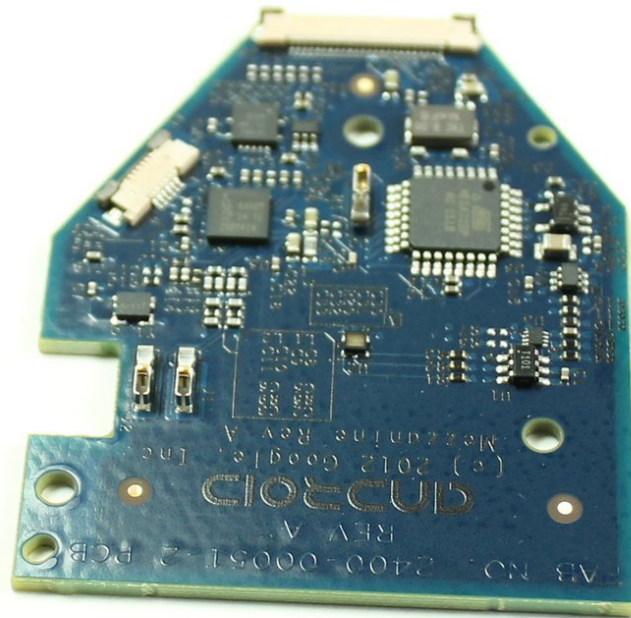




Nexus Q Inner Dome Daughterboard Replacement

Replace the Inner Dome Daughterboard in your Nexus Q.

Written By: Alex Thomas



INTRODUCTION

Replace your worn out inner dome daughterboard: which contains Atmel ATMEGA328P, NXP Semiconductors 44501 Near-Field Communications Controller, TXC 8.00 MHz Crystal Quartz Oscillator, YF04E, and the status LED.

TOOLS:

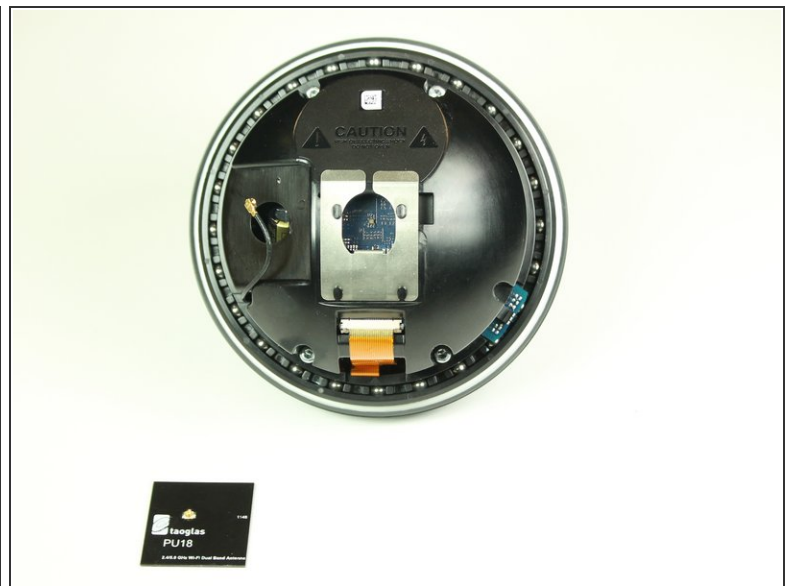
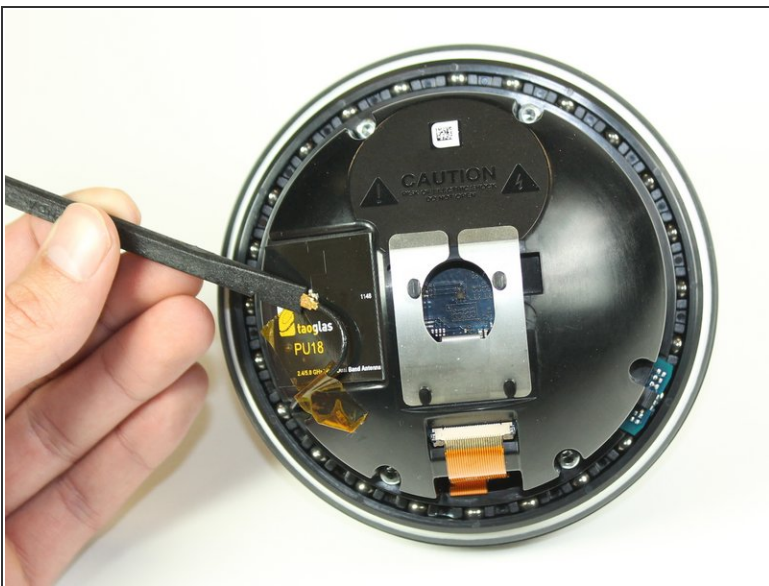
- [Spudger](#) (1)
 - [T10 Torx Screwdriver](#) (1)
 - [T6 Torx Screwdriver](#) (1)
-

Step 1 — Taoglas PU18 Wi-Fi Dual Band Antenna



- Squeeze and pull to pop the cap off of the Nexus Q.

Step 2



- Disconnect the taoglas Wi-Fi Dual Band Antenna by prying with a spudger.
- Once the antenna is disconnected, simply pull it off the outside of the inner dome.

Step 3 — Inner Dome Daughterboard



- Undo the ZIF connector by prying with a spudger.

Step 4



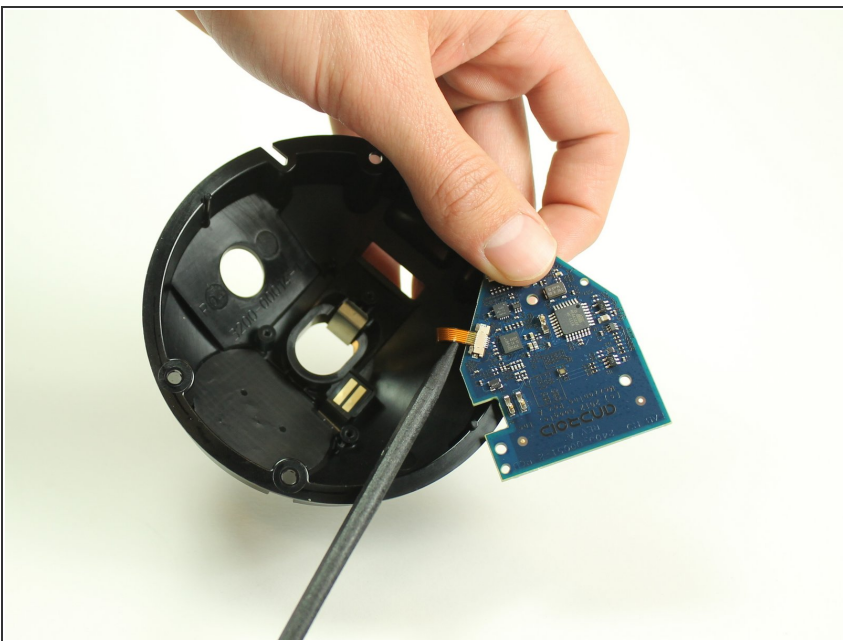
- Use a T10 Torx screwdriver to remove the four 1.3 mm screws holding the inner dome in place.

Step 5



- Use a T6 Torx screwdriver to undo the three 0.8 mm screws holding the inner dome daughterboard in place.

Step 6



- Use a spudger to disconnect the daughterboard from the ZIF connector.

To reassemble your device, follow these instructions in reverse order.