



IBM Thinkpad T60 Hard Drive Replacement

This guide will teach users how to replace an existing hard drive.

Written By: Cody Kratochvil



INTRODUCTION

This guide will teach users how to carefully remove an existing hard drive. Remember to always power down the computer before attempting any installation/removal of any hardware components. Be sure to remove the AC adapter and all cables from the computer. If the computer has been on, wait several minutes before beginning the procedure to ensure all parts have cooled down.

TOOLS:

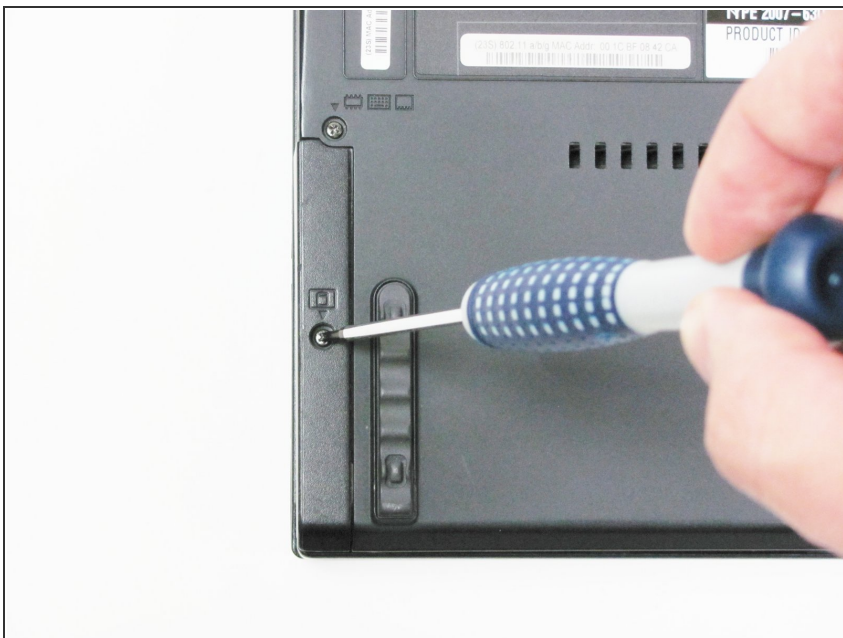
- [Phillips #0 Screwdriver](#) (1)
-

Step 1 — Hard Drive



- Turn the Thinkpad over so you can see the back.
- Locate this screw in the bottom left-hand corner.

Step 2



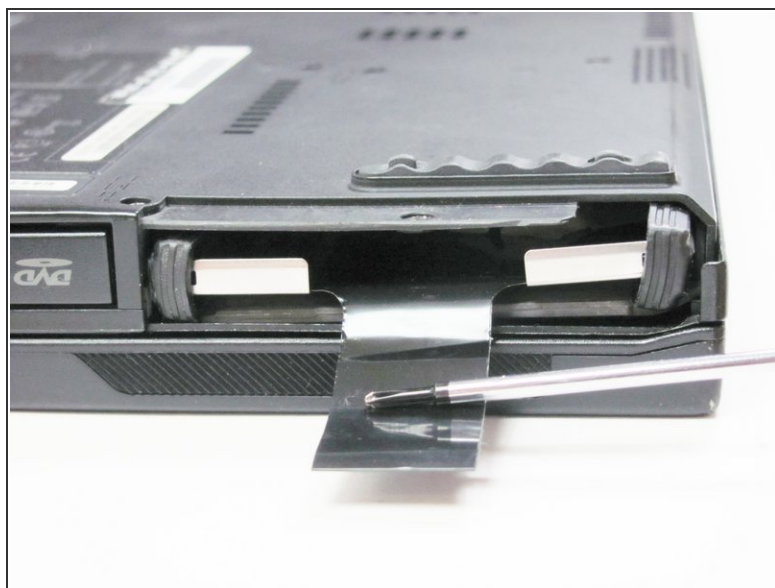
- Using a #0 Phillips screwdriver, remove the 17.0 mm screw.

Step 3



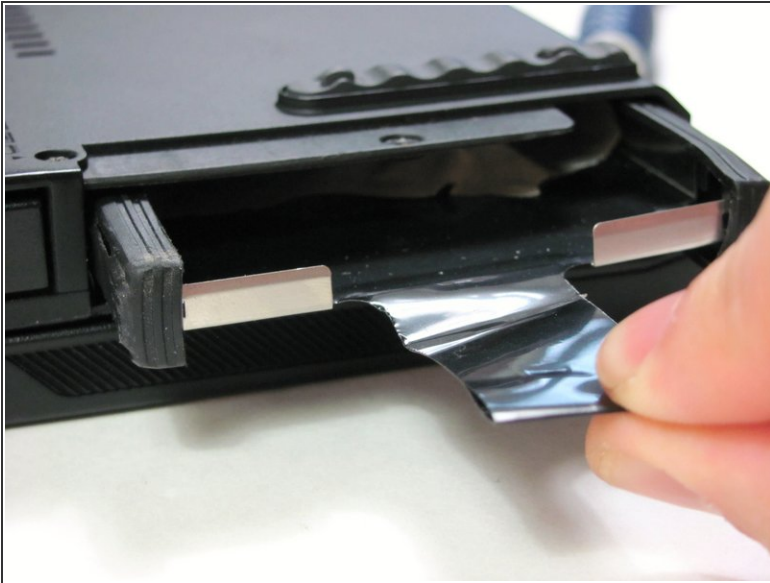
- Carefully remove the plastic piece covering the hard drive port by pulling perpendicular to the side of the laptop.

Step 4



- Use a small screwdriver to locate the black ribbon.
- With the screwdriver, pull the black tab out of the slot.

Step 5



- Pull gently on the black ribbon and the metal tray carrying the hard drive will slide out.

Step 6



- Remove the black plastic coverings on either side of the hard drive. Note that there is not a hard drive in this example, but the process is the same regardless.

To reassemble your device, follow these instructions in reverse order.

